

# CDK1 Monoklonaler Antikörper

Katalog-Nr.: 65182-1-Ig

## Allgemeine Informationen

**Katalog-Nr.:**

65182-1-Ig

**Größe:**

100 µg, 1 mg/ml

**Wirt:**

Maus

**Isotyp:**

IgG2a, kappa

**GenBank-Zugangsnummer:**

BC014563

**GeneID (NCBI):**

983

**Vollständiger Name:**

cell division cycle 2, G1 to S and G2 to M

**Berechnete Masse:**

25 kDa

**Beobachtete Masse:**

30-34 kDa

**Reinigungsmethode:**

Mit Protein-A-

Affinitätschromatographie gereinigt

**CloneNo.:**

POH-1

**Empfohlene Verdünnungen:**

WB 1:500-1:2000

## Anwendungen

**Geprüfte Anwendungen:**

FC (Intra), WB

**Getestete Reaktivität:**

Human, Rind

**Positivkontrollen:**

WB : A431-Zellen, HEK-293-Zellen, HeLa-Zellen, K-562-Zellen

## Hintergrundinformationen

CDK1, also named as CDC2, belongs to the protein kinase superfamily, CMGC Ser/Thr protein kinase family and CDC2/CDKX subfamily. CDK1 plays a key role in the control of the eukaryotic cell cycle. It is required in higher cells for entry into S-phase and mitosis. CDK1 is a catalytic subunit of the highly conserved protein kinase complex known as M-phase promoting factor (MPF), which is essential for G1/S and G2/M phase transitions of eukaryotic cell cycle. It is a component of the kinase complex that phosphorylates the repetitive C-terminus of RNA polymerase II. Mitotic cyclins stably associate with CDK1 and function as regulatory subunits. CDK1 has 2 isoforms produced by alternative splicing with the molecular mass of 34 kDa and 27 kDa.

## Lagerung

**Lagerungsbedingungen:**

Store at 2-8°C. Stable for one year after shipment.

**Lagerungspuffer:**

PBS mit 0,1% Natriumazid.

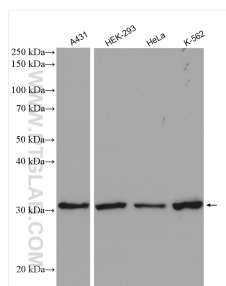
For technical support and original validation data for this product please contact:

T: 1 (888) 4PTGLAB (1-888-478-4522) (toll free in USA), or 1(312) 455-8498 (outside USA)

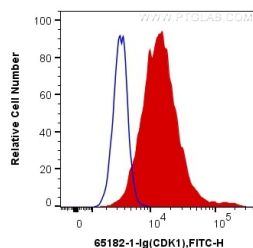
E: [proteintech@ptglab.com](mailto:proteintech@ptglab.com)  
W: [ptglab.com](http://ptglab.com)

This product is exclusively available under Proteintech Group brand and is not available to purchase from any other manufacturer.

## Ausgewählte Validierungsdaten



Various lysates were subjected to SDS PAGE followed by western blot with 65182-1-Ig (CDK1 antibody) at dilution of 1:1000 incubated at room temperature for 1.5 hours.



$1 \times 10^6$  HeLa cells were intracellularly stained with 1  $\mu$ g Anti-Human CDK1 (65182-1-Ig, Clone:POH-1) and CoraLite®488-Conjugated AffiniPure Goat Anti-Mouse IgG(H+L) at dilution 1:1000 (red), or 1  $\mu$ g Mouse IgG2a Isotype Control (66360-2-Ig, Clone: K11A1B2A2) and CoraLite®488-Conjugated AffiniPure Goat Anti-Mouse IgG(H+L) at dilution 1:1000 (blue). Cells were fixed with 4% PFA and permeabilized with Intracellular Staining Permeabilization Wash Buffer.