

Nur für Forschungszwecke

# CD29 Monoklonaler Antikörper

Katalog-Nr.: 65191-1-Ig **2 Publikationen**



## Allgemeine Informationen

<b>Katalog-Nr.:</b> 65191-1-Ig	<b>GenBank-Zugangsnummer:</b> BC020057	<b>Reinigungsmethode:</b> Protein-G-Reinigung
<b>Größe:</b> 100ug, 500 µg/ml	<b>GeneID (NCBI):</b> 3688	<b>CloneNo.:</b> TS2/16
<b>Wirt:</b> Maus	<b>Vollständiger Name:</b> integrin, beta 1 (fibronectin receptor, beta polypeptide, antigen CD29 includes MDF2, MSK12)	
<b>Isotyp:</b> IgG1, kappa	<b>Berechnete Masse:</b> 88 kDa	

## Anwendungen

**Geprüfte Anwendungen:**  
FC

**In Publikationen genannte Anwendungen:**  
FC

**Getestete Reaktivität:**  
Human

**Zitierte Arten:**  
Human, Maus

## Hintergrundinformationen

Integrin beta-1 (ITGB1), also named as CD29, is a 130 kDa single chain type I glycoprotein that is expressed in a heterodimeric complex with one of six distinct  $\alpha$  subunits, comprising the very late activation antigen (VLA) subfamily of adhesion receptors. It is one of the essential surface molecules expressed on human MSC from bone marrow and other sources. The  $\beta$ 1 subunit is also broadly expressed on lymphocytes and monocytes, weakly expressed on granulocytes, and not expressed on erythrocytes. These receptors are involved in a variety of cell-cell and cell-matrix interactions.

## Bemerkenswerte Veröffentlichungen

Verfasser	Pubmed ID	Journal	Anwendung
Junjie Liu	34707701	Exp Ther Med	FC
Baihe Han	35968497	Dis Markers	FC

## Lagerung

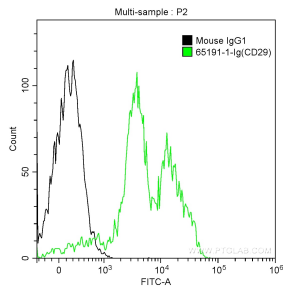
**Lagerungsbedingungen:**  
Store at 2-8°C. Stable for one year after shipment.

**Lagerungspuffer:**  
PBS mit 0,1% Natriumazid, pH 7,3.

For technical support and original validation data for this product please contact:  
T: 1 (888) 4PTGLAB (1-888-478-4522) (toll free in USA), or 1(312) 455-8498 (outside USA)  
E: proteintech@ptglab.com  
W: ptglab.com

**This product is exclusively available under Proteintech Group brand and is not available to purchase from any other manufacturer.**

## Ausgewählte Validierungsdaten



1X10<sup>6</sup> human peripheral blood lymphocytes were surface stained with 0.5 ug Anti-Human CD29 (65191-1-Ig, Clone: TS2/16) and CoraLite®488-Conjugated AffiniPure Goat Anti-Mouse IgG(H+L) at dilution 1:1000 (green), or stained with 0.5 ug Mouse IgG1 Isotype Control and CoraLite®488-Conjugated AffiniPure Goat Anti-Mouse IgG(H+L) at dilution 1:1000 (black). Cells were not fixed.