

Nur für Forschungszwecke

CD2 Monoklonaler Antikörper

Katalog-Nr.:65192-1-Ig



Allgemeine Informationen

Katalog-Nr.: 65192-1-Ig	GenBank-Zugangsnummer: BC033583	Reinigungsmethode: Protein-G-Reinigung
Größe: 100ug , 500 µg/ml	GeneID (NCBI): 914	CloneNo.: TS1/8
Wirt: Maus	Vollständiger Name: CD2 molecule	
Isotyp: Mouse IgG1, kappa	Berechnete Masse: 351 aa, 39 kDa	

Anwendungen

Geprüfte Anwendungen:
FC

Getestete Reaktivität:
Human

Hintergrundinformationen

CD2 is a cell surface glycoprotein present on a majority of thymocytes, all mature T cells and subset of NK cells but not on B lymphocytes. It is a pan T-cell marker. CD2 interacts with lymphocyte function-associated antigen (LFA-3/CD58) and CD48/BCM1 to mediate adhesion between T-cells and other cell types. CD2 is implicated in the triggering of T-cells, the cytoplasmic domain is implicated in the signaling function.

Lagerung

Lagerungsbedingungen:
Bei 2-8°C lagern.

Lagerungspuffer:
PBS mit 0,1% Natriumazid, pH 7,3.

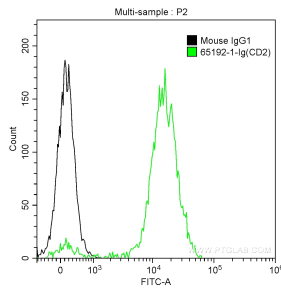
For technical support and original validation data for this product please contact:

T: 1 (888) 4PTGLAB (1-888-478-4522) (toll free
in USA), or 1(312) 455-8498 (outside USA)

E: proteintech@ptglab.com
W: ptglab.com

This product is exclusively available under Proteintech Group brand and is not available to purchase from any other manufacturer.

Ausgewählte Validierungsdaten



1X10⁶ human peripheral blood lymphocytes were surface stained with 0.5 ug Anti-Human CD2 (65192-1-Ig, Clone: TS1/8) and CoraLite®488-Conjugated AffiniPure Goat Anti-Mouse IgG(H+L) at dilution 1:1000 (green), or stained with 0.5 ug Mouse IgG1 Isotype Control and CoraLite®488-Conjugated AffiniPure Goat Anti-Mouse IgG(H+L) at dilution 1:1000 (black). Cells were not fixed.