

Nur für Forschungszwecke

CD21 Monoklonaler Antikörper

Katalog-Nr.:65198-1-Ig



Allgemeine Informationen

| | | |
|-----------------------------------|--|--|
| Katalog-Nr.: 65198-1-Ig | GenBank-Zugangsnummer: BC136394 | Reinigungsmethode: Protein-G-Reinigung |
| Größe: 100ug, 0.5 mg/ml | GeneID (NCBI): 1380 | CloneNo.: BU32 |
| Wirt: Maus | Vollständiger Name: complement component (3d/Epstein Barr virus) receptor 2 | |
| Isotyp: IgG1, kappa | Berechnete Masse: 1092 aa, 119 kDa | |

Anwendungen

Geprüfte Anwendungen:
FC

Getestete Reaktivität:
Human

Hintergrundinformationen

CD21, also known as complement receptor type 2 (CR2), complement C3d receptor, and Epstein-Barr virus receptor, is a transmembrane protein that contains a small cytoplasmic domain, a transmembrane region and an extracellular domain consisting of 15 tandem short consensus repeat sequences (PMID: 6230668; 2551147). It is expressed on B cells, follicular dendritic cells, thymocytes and a subset of peripheral T cells (PMID: 26119182). CD21 binds complement fragments C3d, C3dg and iC3b and acts as a receptor for the Epstein-Barr virus (PMID: 7753047). On B cells, together with CD19 and CD81, CD21 forms a complex that functions as a co-receptor to the BCR (PMID: 7542009). It is involved in B cells activation and functions.

Lagerung

Lagerungsbedingungen:
Store at 2-8°C. Stable for one year after shipment.

Lagerungspuffer:
PBS with 0.09% sodium azide.

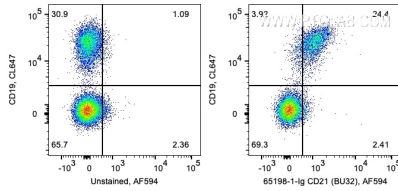
For technical support and original validation data for this product please contact:

T: 1 (888) 4PTGLAB (1-888-478-4522) (toll free
in USA), or 1(312) 455-8498 (outside USA)

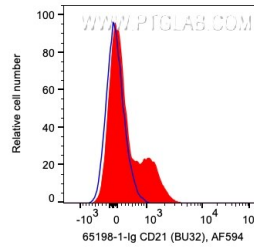
E: proteintech@ptglab.com
W: ptglab.com

This product is exclusively available under Proteintech Group brand and is not available to purchase from any other manufacturer.

Ausgewählte Validierungsdaten



1X10⁶ human PBMCs were surface co-stained with CL647 Anti-Human CD19 and 0.2 ug Anti-Human CD21 (65198-1-Ig, Clone:BU32) and CoraLite®594-Conjugated AffiniPure Goat Anti-Mouse IgG(H+L) at dilution 1:1000 or unstained. Cells were not fixed. Lymphocytes were gated.



1X10⁶ human PBMCs were surface stained with 0.2 ug Anti-Human CD21 (65198-1-Ig, Clone:BU32) and CoraLite®594-Conjugated AffiniPure Goat Anti-Mouse IgG(H+L) at dilution 1:1000 or unstained. Cells were not fixed. Lymphocytes were gated.