

Nur für Forschungszwecke

# IgG2b Isotype Control Monoklonaler Antikörper



Katalog-Nr.: 65211-1-Ig **1 Publikationen**

## Allgemeine Informationen

Katalog-Nr.: 65211-1-Ig	GenBank-Zugangsnummer: GeneID (NCBI):	Reinigungsmethode: Affinitätsreinigung
Größe: 500ug, 0.5 mg/mL	Vollständiger Name:	CloneNo.: LTF-2
Wirt: Ratte		
Isotyp: IgG2b		

## Anwendungen

Geprüfte Anwendungen:  
FC  
Getestete Reaktivität:

## Hintergrundinformationen

The LTF-2 immunoglobulin is useful as an isotype-matched control. The LTF-2 immunoglobulin has an unknown binding specificity and is used as an isotype control for rat IgG2b antibodies. This antibody has been quality-tested for flow cytometry as negative control.

## Bemerkenswerte Veröffentlichungen

Verfasser	Pubmed ID	Journal	Anwendung
Xinzh Li	34893641	Nat Commun	

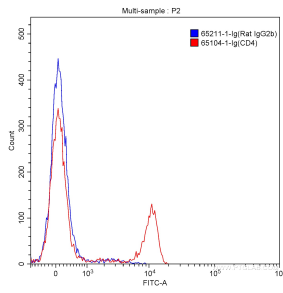
## Lagerung

Lagerungsbedingungen:  
Bei 2-8°C lagern.  
Lagerungspuffer:  
Phosphatbasierter Puffer mit 0,09% Natriumazid, pH 7,2.

For technical support and original validation data for this product please contact:  
T: 1 (888) 4PTGLAB (1-888-478-4522) (toll free in USA), or 1(312) 455-8498 (outside USA)  
E: proteintech@ptglab.com  
W: ptglab.com

This product is exclusively available under Proteintech Group brand and is not available to purchase from any other manufacturer.

## Ausgewählte Validierungsdaten



1X10<sup>6</sup> BALB/c mouse splenocytes were surface stained with 0.5 ug Rat IgG2b Isotype Control (65211-1-Ig, Clone: LTF-2) (blue) and Fluorescein (FITC)-conjugated Affinipure Goat Anti-Rat IgG(H+L) at dilution of 1:1000, or with 0.5 ug Anti-Mouse CD4 (65104-1-Ig, Clone: GK1.5) (red) and Fluorescein (FITC)-conjugated Affinipure Goat Anti-Rat IgG(H+L) at dilution of 1:1000. Cells were not fixed.