

Nur für Forschungszwecke

# HLA-DR Monoklonaler Antikörper

Katalog-Nr.:65218-1-Ig



## Allgemeine Informationen

**Katalog-Nr.:**

65218-1-Ig

**Größe:**

100µg , 500 µg/ml

**Wirt:**

Maus

**Isotyp:**

IgG2a, kappa

**GenBank-Zugangsnummer:**

BC032350

**GeneID (NCBI):**

3122

**Vollständiger Name:**

major histocompatibility complex,  
class II, DR alpha

**Berechnete Masse:**

254 aa, 29 kDa

**Reinigungsmethode:**

Protein-A-Reinigung

**CloneNo.:**

L243

## Anwendungen

**Geprüfte Anwendungen:**

FC

**Getestete Reaktivität:**

Human

## Hintergrundinformationen

### Lagerung

**Lagerungsbedingungen:**

Store at 2-8°C. Stable for one year after shipment.

**Lagerungspuffer:**

PBS with 0.09% sodium azide.

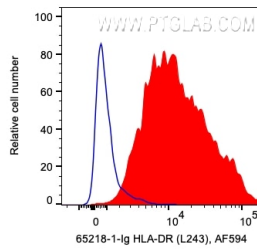
For technical support and original validation data for this product please contact:

T: 1 (888) 4PTGLAB (1-888-478-4522) (toll free  
in USA), or 1(312) 455-8498 (outside USA)

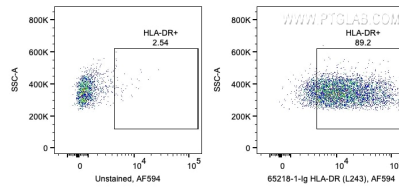
E: [proteintech@ptglab.com](mailto:proteintech@ptglab.com)  
W: [ptglab.com](http://ptglab.com)

This product is exclusively available under Proteintech Group brand and is not available to purchase from any other manufacturer.

## Ausgewählte Validierungsdaten



1X10<sup>6</sup> human PBMCs were surface stained with 0.2 ug Anti-Human HLA-DR (65218-1-Ig, Clone:L243) and CoraLite®594-Conjugated AffiniPure Goat Anti-Mouse IgG(H+L) at dilution 1:1000. Cells were not fixed. Monocytes were gated.



1X10<sup>6</sup> human PBMCs were surface stained with 0.2 ug Anti-Human HLA-DR (65218-1-Ig, Clone:L243) and CoraLite®594-Conjugated AffiniPure Goat Anti-Mouse IgG(H+L) at dilution 1:1000. Cells were not fixed. Monocytes were gated.