

Nur für Forschungszwecke

# CD85j / LILRB1 Monoklonaler Antikörper

Katalog-Nr.: 65238-1-Ig



## Allgemeine Informationen

**Katalog-Nr.:**  
65238-1-Ig

**Größe:**  
100ug, 0.5 mg/mL

**Wirt:**  
Maus

**Isotyp:**  
IgG2b, kappa

**GenBank-Zugangsnummer:**  
BC015731

**GeneID (NCBI):**  
10859

**Vollständiger Name:**  
leukocyte immunoglobulin-like receptor, subfamily B (with TM and ITIM domains), member 1

**Berechnete Masse:**  
71 kDa

**Reinigungsmethode:**  
Affinitätsreinigung

**CloneNo.:**  
GHI/75

## Anwendungen

**Geprüfte Anwendungen:**  
FC

**Getestete Reaktivität:**  
Human

## Hintergrundinformationen

### Lagerung

**Lagerungsbedingungen:**  
Store at 2-8°C. Stable for one year after shipment.  
**Lagerungspuffer:**  
PBS with 0.09% sodium azide.

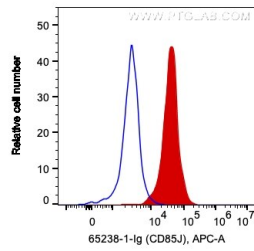
For technical support and original validation data for this product please contact:

T: 1 (888) 4PTGLAB (1-888-478-4522) (toll free in USA), or 1(312) 455-8498 (outside USA)

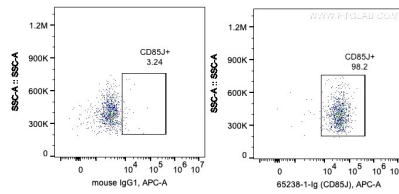
E: [proteintech@ptglab.com](mailto:proteintech@ptglab.com)  
W: [ptglab.com](http://ptglab.com)

This product is exclusively available under Proteintech Group brand and is not available to purchase from any other manufacturer.

## Ausgewählte Validierungsdaten



1X10<sup>6</sup> PBMC were surface stained with 0.2 ug Anti-Human LLRB1 (65238-1-Ig, Clone: GHI/75) and APC-Donkey anti-Mouse IgG at dilution 1:1000 (red), or 0.2 ug Mouse IgG1 Isotype Control (66360-1-Ig, Clone: T1F8D3F10) (blue). Monocytes are gated. Cells were not fixed.



1X10<sup>6</sup> PBMC were surface stained with 0.2 ug Anti-Human LLRB1 (65238-1-Ig, Clone: GHI/75) and APC-Donkey anti-Mouse IgG at dilution 1:1000, or 0.2 ug Mouse IgG1 Isotype Control (66360-1-Ig, Clone: T1F8D3F10). Monocytes are gated. Cells were not fixed.