

Nur für Forschungszwecke

CD35 Monoklonaler Antikörper

Katalog-Nr.:65254-1-Ig



Allgemeine Informationen

Katalog-Nr.:

65254-1-Ig

Größe:

100ug, 0.5 mg/mL

Wirt:

Maus

Isotyp:

IgG1, kappa

GenBank-Zugangsnummer:

NM_000573

GeneID (NCBI):

1378

Vollständiger Name:

complement component (3b/4b)
receptor 1 (Knops blood group)

Berechnete Masse:

224 kDa

Reinigungsmethode:

Affinitätsreinigung

CloneNo.:

E11

Anwendungen

Geprüfte Anwendungen:

FC, ELISA

Getestete Reaktivität:

Human

Hintergrundinformationen

Lagerung

Lagerungsbedingungen:

Store at 2-8°C. Stable for one year after shipment.

Lagerungspuffer:

PBS with 0.09% sodium azide.

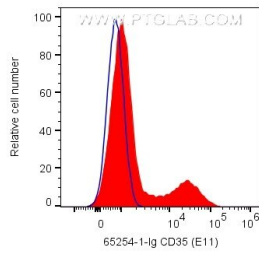
For technical support and original validation data for this product please contact:

T: 1 (888) 4PTGLAB (1-888-478-4522) (toll free
in USA), or 1(312) 455-8498 (outside USA)

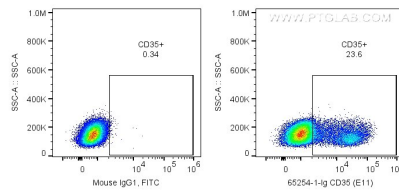
E: proteintech@ptglab.com
W: ptglab.com

This product is exclusively available under Proteintech Group brand and is not available to purchase from any other manufacturer.

Ausgewählte Validierungsdaten



1X10⁶ human PBMCs were surface stained with 0.2 ug Anti-Human CD35 (65254-1-Ig, Clone:E11) and CoraLite®488-Conjugated AffiniPure Goat Anti-Mouse IgG(H+L) at dilution 1:1000 (red), or CoraLite®488-Conjugated Mouse IgG1 Isotype Control. Cells were not fixed. Lymphocytes were gated.



1X10⁶ human PBMCs were surface stained with 0.2 ug Anti-Human CD35 (65254-1-Ig, Clone:E11) and CoraLite®488-Conjugated AffiniPure Goat Anti-Mouse IgG(H+L) at dilution 1:1000, or CoraLite®488-Conjugated Mouse IgG1 Isotype Control. Cells were not fixed. Lymphocytes were gated.