

Nur für Forschungszwecke

CD33 Monoklonaler Antikörper

Katalog-Nr.:65272-1-Ig



Allgemeine Informationen

| | | |
|-----------------------------------|---|--|
| Katalog-Nr.: 65272-1-Ig | GenBank-Zugangsnummer: BC028152 | Reinigungsmethode: Affinitätsreinigung |
| Größe: 100ug, 0.5 mg/mL | GeneID (NCBI): 945 | CloneNo.: WM53 |
| Wirt: Maus | Vollständiger Name: CD33 molecule | |
| Isotyp: IgG1, kappa | Berechnete Masse: 364 aa, 40 kDa | |

Anwendungen

Geprüfte Anwendungen:
FC

Getestete Reaktivität:
Human

Hintergrundinformationen

CD33, also referred to as Siglec-3, is a 67-kDa glycosylated transmembrane protein of sialic acid-binding immunoglobulin-like lectin (siglec) family. CD33 is expressed on monocytes, myeloid progenitors, granulocytes, mast cells, some T cells. It may mediate cell-to-cell adhesion and act as a receptor that inhibits the proliferation of normal and leukemic myeloid cells.

Lagerung

Lagerungsbedingungen:
Store at 2-8°C. Stable for one year after shipment.

Lagerungspuffer:
PBS with 0.09% sodium azide.

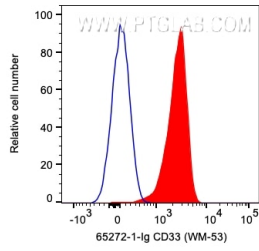
For technical support and original validation data for this product please contact:

T: 1 (888) 4PTGLAB (1-888-478-4522) (toll free
in USA), or 1(312) 455-8498 (outside USA)

E: proteintech@ptglab.com
W: ptglab.com

This product is exclusively available under Proteintech Group brand and is not available to purchase from any other manufacturer.

Ausgewählte Validierungsdaten



1X10⁶ human PBMCs were surface stained with 0.2 ug Anti-Human CD33 (65272-1-Ig, Clone:WM-53) and CoraLite®594-Conjugated AffiniPure Goat Anti-Mouse IgG(H+L) at dilution 1:1000. Cells were not fixed.