

## Allgemeine Informationen

**Katalog-Nr.:**

66001-2-Ig

**GenBank-Zugangsnummer:**

FN315687

**Reinigungsmethode:**

Protein-A-Reinigung

**Größe:**

 150ul, Konzentration: 1000 µg/ml von  
 Nanodrop und 452 µg/ml durch die  
 Bradford-Methode mit BSA als  
 Standard;

**GeneID (NCBI):**

Vollständiger Name:

**CloneNo.:**

3G12B10

**Berechnete Masse:**

26 kDa

**Empfohlene Verdünnungen:**

WB 1:5000-1:50000

IP 0.5-4.0 µg für IP und 1:5000-1:20000  
für WB
**Wirt:**

Maus

**Isotyp:**

IgG2a

## Anwendungen

**Geprüfte Anwendungen:**

IP, WB, ELISA

**Positivkontrollen:**

WB : Recombinant protein,

IP : E. coli-Lysat,

**In Publikationen genannte Anwendungen:**

CoIP, IF, IP, WB

**Getestete Reaktivität:**

Rekombinantes Protein, Schistosoma Japonicum

**Zitierte Arten:**

Human

## Hintergrundinformationen

Protein tags are protein or peptide sequences located either on the C- or N- terminal of the target protein, which facilitates one or several of the following characteristics: solubility, detection, purification, localization and expression. GST (Glutathione S-Transferase) is a widely used protein tag encoded by the Schistosoma japonicum. GST provides both an easily detectable tag and a simple purification process with little effect on the biological function of the protein of interest. Antibodies to GST are useful for checking protein expression both in plaques and on Western blots as well as for immunoaffinity purification of proteins expressed in cells. This antibody recognizes the GST-tag fused to either the N- or C-terminus of targeted proteins.

## Bemerkenswerte Veröffentlichungen

Verfasser	Pubmed ID	Journal	Anwendung
Roni Levin-Konigsberg	31570833	Nat Cell Biol	WB
Nan Zhang	30274774	Biochem Biophys Res Commun	WB
Yanmin Guo	36192478	Oncogene	IP

## Lagerung

**Lagerungsbedingungen:**

Bei -20°C lagern. Nach dem Versand ein Jahr lang stabil

**Lagerungspuffer:**

PBS mit 0.02% Natriumazid und 50% Glycerin pH 7.3.

Aliquotieren ist nicht notwendig bei -20°C Lagerung

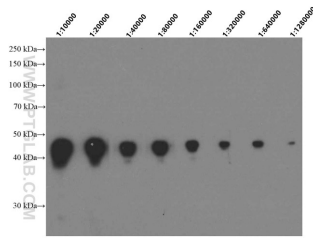
**\*\*\* 20ul-Größen enthalten 0.1% BSA**

For technical support and original validation data for this product please contact:

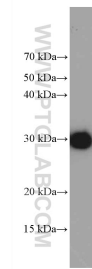
 T: 1 (888) 4PTGLAB (1-888-478-4522) (toll free  
 in USA), or 1(312) 455-8498 (outside USA)

 E: [proteintech@ptglab.com](mailto:proteintech@ptglab.com)  
 W: [ptglab.com](http://ptglab.com)
**This product is exclusively available under Proteintech Group brand and is not available to purchase from any other manufacturer.**

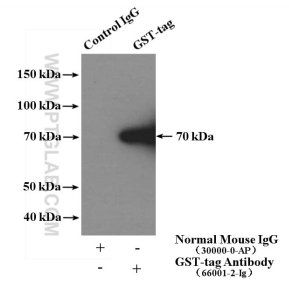
## Ausgewählte Validierungsdaten



GST tagged recombinant protein (25ng/lane) was subjected to SDS-PAGE followed by western blot with anti-GST tag monoclonal antibody 66001-2-Ig at various dilutions.



GST protein (25 ng), pGEX6P-1 vector expressed in E. coli, were subjected to SDS PAGE followed by western blot with 66001-2-Ig (GST Tag antibody, 1:200,000) incubated at room temperature for 1.5 hours.



IP result of anti-GST Tag (IP:66001-2-Ig, 5ug; Detection:66001-2-Ig 1:10000) with Total E. coli lysate (with pGEX4T fused plasmid) 1360 ug.