

Allgemeine Informationen

Katalog-Nr.:
66003-1-Ig

Größe:
150ul, Konzentration: 2000 µg/ml von
Nanodrop und 1041 µg/ml durch die
Bradford-Methode mit BSA als
Standard;

Wirt:
Maus

Isotyp:
IgG2a

Immunogen Katalognummer:
AG0942

GenBank-Zugangsnummer:

GeneID (NCBI):

Vollständiger Name:

Berechnete Masse:
40 kDa

Beobachtete Masse:
40 kDa

Reinigungsmethode:

Protein-A-Reinigung

CloneNo.:

4C6H4

Empfohlene Verdünnungen:

WB 1:1000-1:8000

IP 0.5-4.0 µg für IP und 1:5000-1:50000
für WB

Anwendungen

Geprüfte Anwendungen:

IF, IP, WB, ELISA

In Publikationen genannte Anwendungen:

CoIP, IF, IHC, IP, WB

Getestete Reaktivität:

Rekombinantes Protein

Zitierte Arten:

Human, Maus

Positivkontrollen:

WB : Recombinant protein,

IP : Rekombinantes Protein Protein,

Hintergrundinformationen

Protein tags are protein or peptide sequences located either on the C- or N- terminal of the target protein, which facilitates one or several of the following characteristics: solubility, detection, purification, localization and expression. Maltose binding protein(MBP) is the 370 amino acid product of the E.coli mal E gene. MBP is a useful affinity tag that can increase the expression level and solubility of the resulting tagged protein. The MBP tag also promotes proper folding of the attached protein. Plasmid vectors have been constructed utilizing the MBP domain that allow the synthesis of high levels of MBP-fusion proteins that can be purified in a one step procedure by affinity chromatography cross linked amylose resin. Once bound to amylose, the MBP protein can then be separated from the target protein by cleavage by coagulation Factor Xa at a specific four residue site. Alternatively, the intact fusion protein can be specifically eluted from the resin by the addition of excess free maltose. Subsequent to elution, MBP fusion protein can be visualized either by Western blot analysis or immunoprecipitation using antibodies specific for the MBP-tag. An antibody to MBP can also be used to isolate or detect expression of the protein.

Bemerkenswerte Veröffentlichungen

Verfasser	Pubmed ID	Journal	Anwendung
Song Liu	32908127	Nat Commun	WB
Guizhen Zhao	29089350	Circ Res	WB
Bixin Bai	36380696	Plant J	WB

Lagerung

Lagerungsbedingungen:

Bei -20°C lagern. Nach dem Versand ein Jahr lang stabil

Lagerungspuffer:

PBS mit 0.02% Natriumazid und 50% Glycerin pH 7.3.

Aliquotieren ist nicht notwendig bei -20°C Lagerung

***** 20ul-Größen enthalten 0.1% BSA**

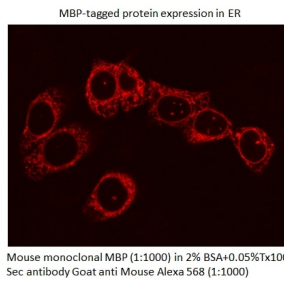
For technical support and original validation data for this product please contact:

T: 1 (888) 4PTGLAB (1-888-478-4522) (toll free
in USA), or 1(312) 455-8498 (outside USA)

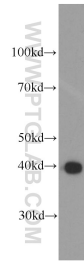
E: proteintech@ptglab.com
W: ptglab.com

This product is exclusively available under Proteintech Group brand and is not available to purchase from any other manufacturer.

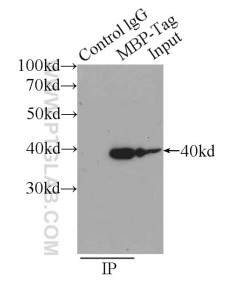
Ausgewählte Validierungsdaten



IF result of MBP tag antibody (66003-1-Ig, 1:1,000) with MBP-Tagged protein. Courtesy of Neeraj Tiwari, PhD, Yale School of Medicine, Yale University.



Recombinant protein were subjected to SDS PAGE followed by western blot with 66003-1-Ig (MBP tag antibody) at dilution of 1:4000 incubated at room temperature for 1.5 hours.



IP Result of anti-MBP tag (IP:66003-1-Ig, 5ug; Detection:66003-1-Ig 1:20000) with Recombinant protein protein lysate 800ug.