

Allgemeine Informationen

Katalog-Nr.:

66009-1-Ig

GenBank-Zugangsnummer:

NM_001101

Reinigungsmethode:

Protein-A-Reinigung

Größe:

150ul, Konzentration: 1000 µg/ml von60

GeneID (NCBI):

60

CloneNo.:

2D4H5

Nanodrop;

Vollständiger Name:

actin, beta

Empfohlene Verdünnungen:

WB 1:20000-1:100000

Wirt:

Maus

Berechnete Masse:

42 kDa

IP 0.5-4.0 ug für IP und 1:5000-1:50000

Isotyp:

IgG2b

Beobachtete Masse:

42 kDa

für WB

IHC 1:20-1:2000

IF 1:500-1:2000

Anwendungen

Geprüfte Anwendungen:

FC, IF, IHC, IP, WB, ELISA

Positivkontrollen:

WB : HeLa-Zellen, 4T1-Zellen, A549-Zellen, CHO-Zellen, HEK-293-Zellen, HepG2-Zellen, Jurkat-Zellen, K-562-Zellen

In Publikationen genannte Anwendungen:

ChIP, CoIP, ELISA, IF, IHC, IP, WB

IP : HeLa-Zellen,

Getestete Reaktivität:

Affe, Hamster, Hausschwein, Huhn, Human, Hund, Kaninchen, Maus, Ratte, Zebrafisch

IHC : humanes Nierengewebe, humanes Herzgewebe, humanes Hirngewebe, humanes Kolonkarzinomgewebe

Zitierte Arten:

Arabidopsis, Drosophila, Ente, Huhn, Hund, Hund, Rind

IF : MDCK-Zellen, HeLa-Zellen

Hinweis-IHC: Antigenmaskierung mit TE-Puffer pH 9,0 empfohlen. (*) Wahlweise kann die Antigenmaskierung auch mit Citratpuffer pH 6,0 erfolgen.

Hintergrundinformationen

Actins are highly conserved globular proteins that are involved in various types of cell motility and are ubiquitously expressed in all eukaryotic cells. At least six isoforms of actins are known in mammals and other vertebrates: alpha (ACTC1, cardiac muscle 1), alpha 1 (ACTA1, skeletal muscle) and 2 (ACTA2, aortic smooth muscle), beta (ACTB), gamma 1 (ACTG1) and 2 (ACTG2, enteric smooth muscle). Beta and gamma 1 are two non-muscle actin proteins. Most actins consist of 376aa, while ACTG2 (rich in muscles) has 375aa and ACTG1(found in non-muscle cells) has only 374aa. Beta actin has been widely used as the internal control in RT-PCR and Western Blotting as a 42-kDa protein. However, the 41 kDa cleaved fragment of beta actin can be generated during apoptosis process. This antibody can recognize all the actins. The isotype of this antibody is IgG2b. For murine tissue sample, conjugated antibody (HRP-66009) or rabbit antibody (20536-1-AP) is preferable.

Bemerkenswerte Veröffentlichungen

Verfasser	Pubmed ID	Journal	Anwendung
Xiaoxuan Zhai	36184541	Int Heart J	WB
Yueke Lin	36178239	EMBO Rep	WB
Yangfei Yi	36178080	Orthop Surg	WB

Lagerung

Lagerungsbedingungen:

Bei -20°C lagern. Nach dem Versand ein Jahr lang stabil

Lagerungspuffer:

PBS mit 0.02% Natriumazid und 50% Glycerin pH 7.3.

Aliquotieren ist nicht notwendig bei -20°C Lagerung

*** 20ul-Größen enthalten 0.1% BSA

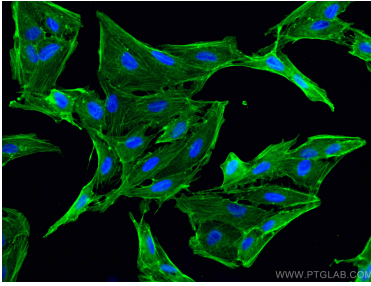
For technical support and original validation data for this product please contact:

T: 1 (888) 4PTGLAB (1-888-478-4522) (toll free in USA), or 1(312) 455-8498 (outside USA)

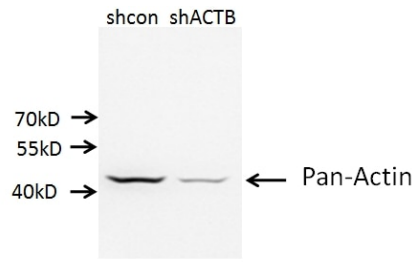
E: proteintech@ptglab.comW: ptglab.com

This product is exclusively available under Proteintech Group brand and is not available to purchase from any other manufacturer.

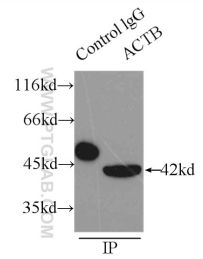
Ausgewählte Validierungsdaten



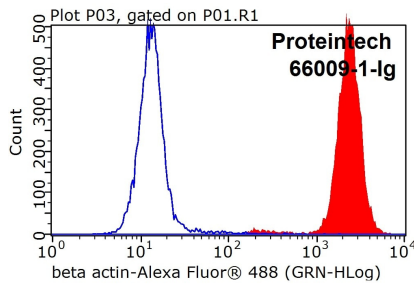
Immunofluorescent analysis of (-20°C Methanol) fixed MDCK cells using Beta Actin antibody (66009-1-Ig, Clone: 2D4H5) at dilution of 1:1000 and CoraLite®488-Conjugated AffiniPure Goat Anti-Mouse IgG(H+L).



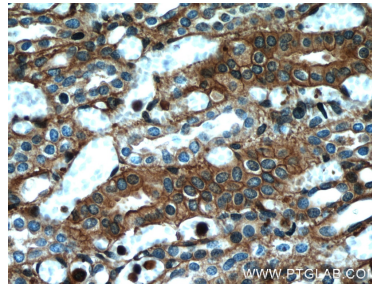
A549 cells (shcontrol and shRNA of Beta Actin) were subjected to SDS PAGE followed by western blot with 66009-1-Ig (Mouse anti Pan-actin antibody) at dilution of 1:10000.



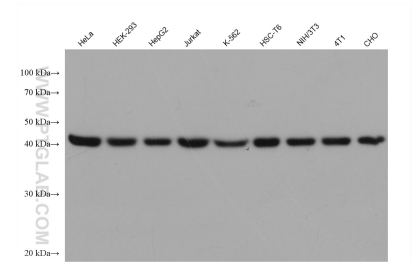
IP Result of anti-beta actin (IP:66009-1-Ig, 3ug; Detection:66009-1-Ig 1:10000) with HeLa cells lysate 3100ug.



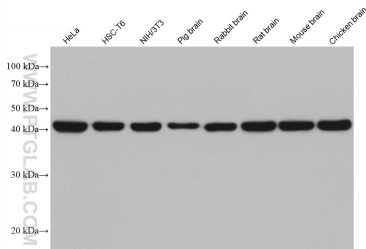
1X10⁶ HeLa cells were stained with 0.05 ug Anti-Human Beta Actin (66009-1-Ig, Clone:2D4H5) and FITC-Goat anti-mouse IgG at dilution 1:100 (red), or stained with 0.05 ug isotype control and FITC-Goat anti-mouse IgG at dilution 1:100 (blue). Cells were fixed with 4% PFA and permeabilized with 0.1% TritonX-100.



Immunohistochemical analysis of paraffin-embedded human kidney using 66009-1-Ig at dilution of 1:500 (under 40x lens).



Various lysates were subjected to SDS PAGE followed by western blot with 66009-1-Ig (Beta Actin antibody) at dilution of 1:200000 incubated at room temperature for 1.5 hours.



Various lysates were subjected to SDS PAGE followed by western blot with 66009-1-Ig (Beta Actin antibody) at dilution of 1:100000 incubated at room temperature for 1.5 hours.