

Nur für Forschungszwecke

SEC5/EXOC2 Monoklonaler Antikörper



Katalog-Nr.: 66011-1-Ig

Vorgestelltes Produkt

5 Publikationen

Allgemeine Informationen

Katalog-Nr.:
66011-1-Ig

Größe:
150ul, Konzentration: 1700 µg/ml von 55770

Nanodrop und 1220 µg/ml durch die Bradford-Methode mit BSA als Standard;

Wirt:
Maus

Isotyp:
IgG2b

Immunogen Katalognummer:
AG17866

GenBank-Zugangsnummer:
BC016918

GeneID (NCBI):

Vollständiger Name:
exocyst complex component 2

Berechnete Masse:
924 aa, 104 kDa

Beobachtete Masse:
100 kDa

Reinigungsmethode:
Protein-A-Reinigung

CloneNo.:
1C11G2

Empfohlene Verdünnungen:
WB 1:2500-1:10000
IP 0.5-4.0 µg für IP und 1:500-1:1000 für WB
IHC 1:200-1:800
IF 1:200-1:800

Anwendungen

Geprüfte Anwendungen:

IF, IHC, IP, WB, ELISA

In Publikationen genannte Anwendungen:

IF, WB

Getestete Reaktivität:

Hausschwein, Human, Maus, Ratte

Zitierte Arten:

Human

Hinweis-IHC: Antigenmaskierung mit TE-Puffer pH 9,0 empfohlen. (*) Wahlweise kann die Antigenmaskierung auch mit Citratpuffer pH 6,0 erfolgen.

Positivkontrollen:

WB: Maushirngewebe, Hausschwein-Cerebellum-Gewebe, Hausschwein-Hirngewebe, HEK-293-Zellen, humanes Hirngewebe, Ratten-Cerebellum-Gewebe, Rattenhirngewebe

IP: Maushirngewebe,

IHC: humanes Mammakarzinomgewebe, humanes Leberkarzinomgewebe

IF: HeLa-Zellen, MDA-MB-231-Zellen

Hintergrundinformationen

EXOC2 (exocyst complex component 2), also known as SEC5 and SEC5L1, is a component of the exocyst complex, and is required to mediate RalB-dependent survival signals in transformed cells. The exocyst complex, composed of eight evolutionarily conserved subunits (SEC3, SEC5, SEC6, SEC8, SEC10, SEC15, EXO70, and EXO84), is involved in tethering post-Golgi secretory vesicles to specific plasma membrane domains. The gene of EXOC2 maps to chromosome 6p25.3, and encodes a 924-amino acid protein with an experimentally determined molecular mass of 95-100 kDa. EXOC2 mRNA is widely expressed with highest levels in brain and placenta.

Bemerkenswerte Veröffentlichungen

Verfasser	Pubmed ID	Journal	Anwendung
Hong-Ling Wang	26359301	J Cell Sci	
Tanmoy Saha	34795441	Nat Nanotechnol	WB,IF
I M Gonzalez	24856041	Placenta	WB,IF

Lagerung

Lagerungsbedingungen:

Bei -20°C lagern. Nach dem Versand ein Jahr lang stabil

Lagerungspuffer:

PBS mit 0.02% Natriumazid und 50% Glycerin pH 7.3.

Aliquotieren ist nicht notwendig bei -20°C Lagerung

*** 20ul-Größen enthalten 0.1% BSA

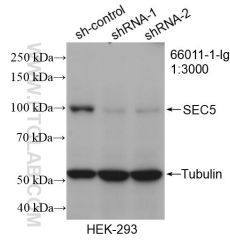
For technical support and original validation data for this product please contact:

T: 1 (888) 4PTGLAB (1-888-478-4522) (toll free in USA), or 1(312) 455-8498 (outside USA)

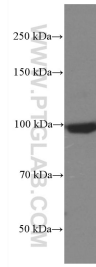
E: proteintech@ptglab.com
W: ptglab.com

This product is exclusively available under Proteintech Group brand and is not available to purchase from any other manufacturer.

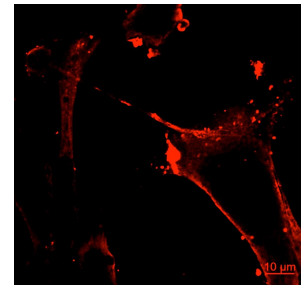
Ausgewählte Validierungsdaten



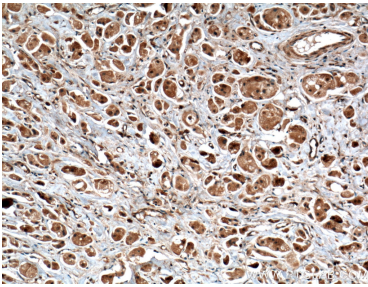
WB result of SEC5/EXOC2 antibody (66011-1-Ig; 1:3000; incubated at room temperature for 1.5 hours) with sh-Control and sh-SEC5/EXOC2 transfected HEK-293 cells.



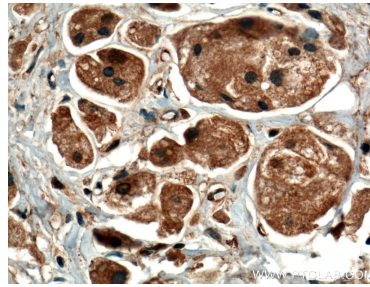
mouse brain tissue were subjected to SDS PAGE followed by western blot with 66011-1-Ig (SEC5/EXOC2 antibody) at dilution of 1:5000 incubated at room temperature for 1.5 hours.



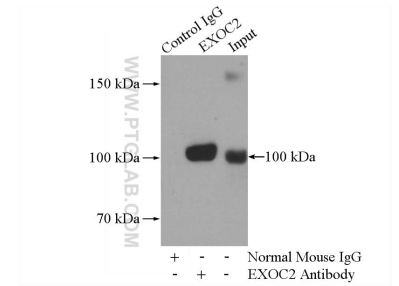
Immunostaining of exocyst protein Sec5 (66011-1-Ig, red) in MDA-MB-231 cells. The image was credited by Dr. Hae Lin Jang from Harvard Medical School.



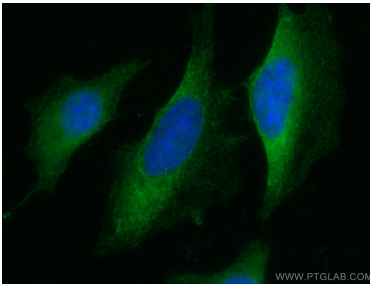
Immunohistochemical analysis of paraffin-embedded human breast cancer tissue slide using 66011-1-Ig (SEC5/EXOC2 antibody) at dilution of 1:400 (under 10x lens. Heat mediated antigen retrieval with Tris-EDTA buffer (pH 9.0).



Immunohistochemical analysis of paraffin-embedded human breast cancer tissue slide using 66011-1-Ig (SEC5/EXOC2 antibody) at dilution of 1:400 (under 40x lens. Heat mediated antigen retrieval with Tris-EDTA buffer (pH 9.0).



IP Result of anti-SEC5/EXOC2 (IP:66011-1-Ig, 5ug; Detection:66011-1-Ig 1:500) with mouse brain tissue lysate 3440ug.



Immunofluorescent analysis of (-20°C Ethanol) fixed HeLa cells using SEC5/EXOC2 antibody (66011-1-Ig, Clone: 1C11G2) at dilution of 1:400 and CoraLite®488-Conjugated AffiniPure Goat Anti-Mouse IgG(H+L).