

Nur für Forschungszwecke

# HLA class I ABC Monoklonaler Antikörper



Katalog-Nr.: 66013-1-Ig

Vorgestelltes Produkt

9 Publikationen

## Allgemeine Informationen

Katalog-Nr.:  
66013-1-Ig

Größe:  
150ul, Konzentration: 1130 µg/ml von 3105  
Nanodrop und 1107 µg/ml durch die  
Bradford-Methode mit BSA als  
Standard;

Wirt:  
Maus

Isotyp:  
IgG2b

Immunogen Katalognummer:  
AG7488

GenBank-Zugangsnummer:  
BC003069

GeneID (NCBI):

Vollständiger Name:  
major histocompatibility complex,  
class I, A

Berechnete Masse:  
41 kDa

Beobachtete Masse:  
40-44 kDa

Reinigungsmethode:  
Protein-A-Reinigung

CloneNo.:  
5C5B7

Empfohlene Verdünnungen:  
WB 1:5000-1:50000  
IHC 1:1000-1:10000

## Anwendungen

Geprüfte Anwendungen:  
FC, IHC, WB, ELISA

In Publikationen genannte Anwendungen:  
IHC, IP, WB

Getestete Reaktivität:  
Hausschwein, Human

Zitierte Arten:  
Hausschwein, Human

**Hinweis-IHC: Antigenmaskierung mit TE-Puffer pH 9,0 empfohlen. (\*) Wahlweise kann die Antigenmaskierung auch mit Citratpuffer pH 6,0 erfolgen.**

Positivkontrollen:

WB: HeLa-Zellen, Hausschwein-Milzgewebe, HEK-293-Zellen, HepG2-Zellen, Jurkat-Zellen, NCCIT-Zellen, Raji-Zellen, U-937-Zellen

IHC: humanes Tonsillitgewebe, humanes Leberkarzinomgewebe, humanes Magenkrebsgewebe

## Hintergrundinformationen

Human major histocompatibility complex (MHC) antigens, also referred to as human leukocyte antigens (HLA), are encoded by genes located on the short arm of chromosome 6 (6p21.3). There are two classes of HLA antigens: class I (HLA-A, B and C) and class II (HLA-D). This class I molecules are polymorphic membrane glycoproteins composed of a heavy (alpha) chain (44 kDa) which is encoded by a HLA class I gene (HLA-A, B or C), and  $\beta$ 2-microglobulin light (beta) chain (12 kDa). They are involved in the presentation of foreign antigens to the immune system. (PMID: 667938; 3375250)

## Bemerkenswerte Veröffentlichungen

Verfasser	Pubmed ID	Journal	Anwendung
Fengwen Zhang	36136978	Proc Natl Acad Sci U S A	WB, IP
Fengwen Zhang	35665005	bioRxiv	WB
Melania Scarpa	31646078	Oncoimmunology	WB

## Lagerung

Lagerungsbedingungen:

Bei -20°C lagern. Nach dem Versand ein Jahr lang stabil

Lagerungspuffer:

PBS mit 0.02% Natriumazid und 50% Glycerin pH 7.3.

Aliquotieren ist nicht notwendig bei -20°C Lagerung

\*\*\* 20ul-Größen enthalten 0.1% BSA

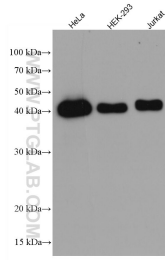
For technical support and original validation data for this product please contact:

T: 1 (888) 4PTGLAB (1-888-478-4522) (toll free in USA), or 1(312) 455-8498 (outside USA)

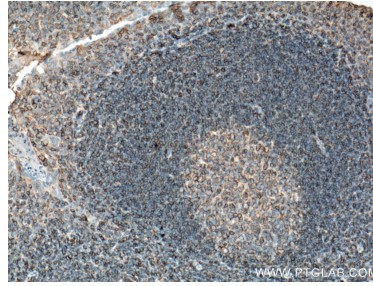
E: proteintech@ptglab.com  
W: ptglab.com

This product is exclusively available under Proteintech Group brand and is not available to purchase from any other manufacturer.

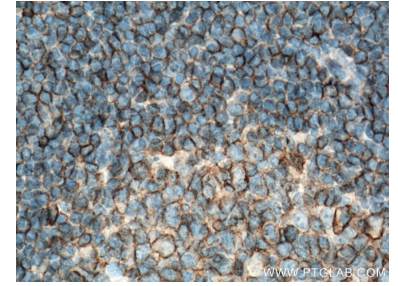
## Ausgewählte Validierungsdaten



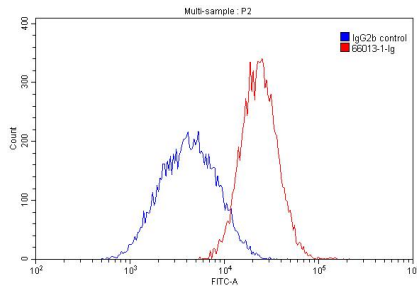
Various lysates were subjected to SDS PAGE followed by western blot with 66013-1-Ig (HLA class I ABC antibody) at dilution of 1:10000 incubated at room temperature for 1.5 hours.



Immunohistochemical analysis of paraffin-embedded human tonsillitis tissue slide using 66013-1-Ig (HLA class I ABC antibody) at dilution of 1:10000 (under 10x lens). Heat mediated antigen retrieval with Tris-EDTA buffer (pH 9.0).



Immunohistochemical analysis of paraffin-embedded human tonsillitis tissue slide using 66013-1-Ig (HLA class I ABC antibody) at dilution of 1:10000 (under 40x lens). Heat mediated antigen retrieval with Tris-EDTA buffer (pH 9.0).



$1 \times 10^6$  Raji cells were stained with 0.20ug HLA class I ABC antibody (66013-1-Ig, red) and control antibody (blue). Cells were not fixed.