

Allgemeine Informationen

Katalog-Nr.: 66020-1-Ig	GenBank-Zugangsnummer: BC019307	Reinigungsmethode: Protein-A-Reinigung
Größe: 150ul , Konzentration: 1398 µg/ml von598 Nanodrop und 1000 µg/ml durch die Bradford-Methode mit BSA als Standard;	GeneID (NCBI): Vollständiger Name: BCL2-like 1	CloneNo.: 4C12A6
Wirt: Maus	Berechnete Masse: 26 kDa	Empfohlene Verdünnungen: WB 1:2000-1:20000 IHC 1:200-1:600 IF 1:10-1:100
Isotyp: IgG2b	Beobachtete Masse: 30 kDa	
Immunogen Katalognummer: AG18037		

Anwendungen

Geprüfte Anwendungen: FC, IF, IHC, WB, ELISA	Positivkontrollen: WB : Jurkat-Zellen, A431-Zellen, HeLa-Zellen, K-562-Zellen, Ramos-Zellen, RAW 264.7-Zellen IHC : humanes Mammakarzinomgewebe, humanes Hodengewebe, humanes Kolongewebe, humanes Lymphomgewebe IF : HeLa-Zellen,
In Publikationen genannte Anwendungen: IHC, IP, WB	
Getestete Reaktivität: Human, Maus, Ratte	
Zitierte Arten: Human, Maus	
Hinweis-IHC: Antigenmaskierung mit TE-Puffer pH 9,0 empfohlen. (*) Wahlweise kann die Antigenmaskierung auch mit Citratpuffer pH 6,0 erfolgen.	

Hintergrundinformationen

BCL2L1 is a member of the BCL-2 protein family. BCL2L1 is expressed as three isoforms, Bcl-X(L), Bcl-X(s) and Bcl-X(beta), and is located at the outer mitochondrial membrane. The Bcl-XL isoform is a 233 amino acid protein, acting as an apoptotic inhibitor. Bcl-XL can form heterodimers with BAX, BAK or BCL2, and the heterodimerization with BAX does not seem to be required for anti-apoptotic activity. The Bcl-XS isoform is a shorter variant that is 178 amino acids in length and lacks a 63 amino acid region (amino acids 126-188), acting as an apoptotic activator.

Bemerkenswerte Veröffentlichungen

Verfasser	Pubmed ID	Journal	Anwendung
Yingjie Qing	34603598	Oxid Med Cell Longev	WB
Liling Jiang	36082692	Clin Transl Med	WB
Xi Chen	33174023	Mol Med Rep	WB

Lagerung

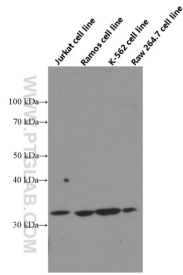
Lagerungsbedingungen:
Bei -20°C lagern. Nach dem Versand ein Jahr lang stabil
Lagerungspuffer:
PBS mit 0.02% Natriumazid und 50% Glycerin pH 7.3.
Aliquotieren ist nicht notwendig bei -20°C Lagerung

***** 20ul-Größen enthalten 0.1% BSA**

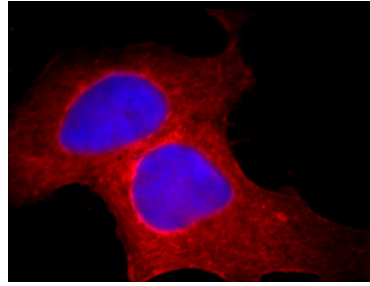
For technical support and original validation data for this product please contact:
 T: 1 (888) 4PTGLAB (1-888-478-4522) (toll free in USA), or 1(312) 455-8498 (outside USA)
 E: proteintech@ptglab.com
 W: ptglab.com

This product is exclusively available under Proteintech Group brand and is not available to purchase from any other manufacturer.

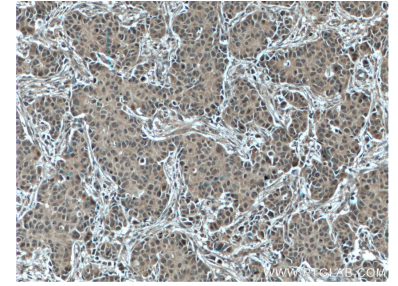
Ausgewählte Validierungsdaten



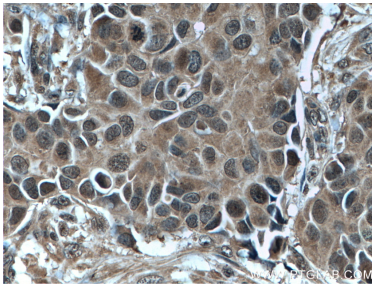
Jurkat, Ramos, K-562 and Raw 264.7 cells were subjected to SDS PAGE followed by western blot with 66020-1-Ig (Bcl-xL Antibody) at dilution of 1:20000 incubated at room temperature for 1.5 hours.



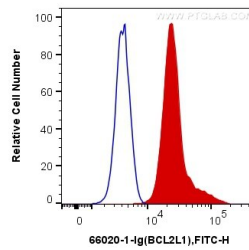
Immunofluorescent analysis of HeLa cells, using BCL2L1 antibody 66020-1-Ig at 1:25 dilution and Rhodamine-labeled goat anti-mouse IgG (red). Blue pseudocolor = DAPI (fluorescent DNA dye).



Immunohistochemical analysis of paraffin-embedded human breast cancer tissue slide using 66020-1-Ig (Bcl-XL antibody) at dilution of 1:600 (under 10x lens. Heat mediated antigen retrieval with Tris-EDTA buffer (pH 9.0).



Immunohistochemical analysis of paraffin-embedded human breast cancer tissue slide using 66020-1-Ig (Bcl-XL antibody) at dilution of 1:600 (under 40x lens. Heat mediated antigen retrieval with Tris-EDTA buffer (pH 9.0).



1x10⁶ HeLa cells were intracellularly stained with 0.4 ug Anti-Human Bcl-XL (66020-1-Ig, Clone:4C12A6) and Coralite®488-Conjugated AffiniPure Goat Anti-Mouse IgG(H+L) at dilution 1:1000 (red), or 0.4 ug Control Antibody. Cells were fixed and permeabilized with Transcription Factor Staining Buffer Kit (PF00011).