

Nur für Forschungszwecke

CDC6 Monoklonaler Antikörper

Katalog-Nr.:66021-1-Ig



Allgemeine Informationen

Katalog-Nr.: 66021-1-Ig	GenBank-Zugangsnummer: BC025232	Reinigungsmethode: Protein-G-Reinigung
Größe: 150ul , Konzentration: 747 µg/ml durch die Bradford-Methode mit BSA als Standard;	GeneID (NCBI): 990	CloneNo.: 6F12D2
Wirt: Maus	Vollständiger Name: cell division cycle 6 homolog (S. cerevisiae)	Empfohlene Verdünnungen: WB 1:500-1:1000 IF 1:20-1:200
Isotyp: IgG1	Berechnete Masse: 560 aa, 63 kDa	
Immunogen Katalognummer: AG17958	Beobachtete Masse: 65 kDa	

Anwendungen

Geprüfte Anwendungen: IF, WB, ELISA	Positivkontrollen:
Getestete Reaktivität: Human, Maus, Ratte	WB : HeLa-Zellen, HEK-293T-Zellen, NIH/3T3-Zellen, Raji-Zellen, ROS1728-Zellen
	IF : HepG2-Zellen,

Hintergrundinformationen

CDC6, also named as CDC18L and HsCDC18, belongs to the CDC6/cdc18 family. It is involved in the initiation of DNA replication and functions as a regulator at the early steps of DNA replication. It also participates in checkpoint controls that ensure DNA replication is completed before mitosis is initiated. It localizes in cell nucleus during cell cycle G1, but translocates to the cytoplasm at the start of S phase. The subcellular translocation of this protein during cell cycle is regulated through its phosphorylation by Cdk. Defects in CDC6 are the cause of Meier-Gorlin syndrome type 5 (MGORS5). MGORS5 is a syndrome characterized by bilateral microtia, aplasia/hypoplasia of the patellae, and severe intrauterine and postnatal growth retardation with short stature and poor weight gain. This antibody is a mouse monoclonal antibody raised against residues near the C terminus of human CDC6.

Lagerung

Lagerungsbedingungen:
Bei -20°C lagern. Nach dem Versand ein Jahr lang stabil

Lagerungspuffer:
PBS mit 0.02% Natriumazid und 50% Glycerin pH 7.3.

Aliquotieren ist nicht notwendig bei -20°C Lagerung

*** 20ul-Größen enthalten 0.1% BSA

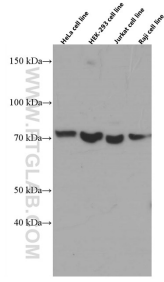
For technical support and original validation data for this product please contact:

T: 1 (888) 4PTGLAB (1-888-478-4522) (toll free
in USA), or 1(312) 455-8498 (outside USA)

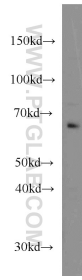
E: proteintech@ptglab.com
W: ptglab.com

This product is exclusively available under Proteintech Group brand and is not available to purchase from any other manufacturer.

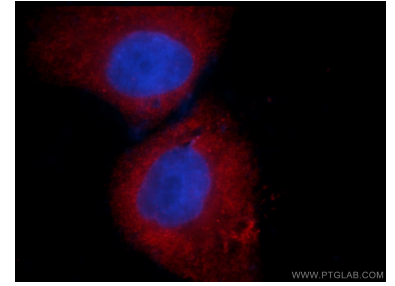
Ausgewählte Validierungsdaten



Various lysates were subjected to SDS PAGE followed by western blot with 66021-1-Ig (CDC6 antibody) at dilution of 1:8000 incubated at room temperature for 1.5 hours.



HeLa cells were subjected to SDS PAGE followed by western blot with 66021-1-Ig (CDC6 antibody) at dilution of 1:500 incubated at room temperature for 1.5 hours.



Immunofluorescent analysis of HepG2 cells using 66021-1-Ig (CDC6 antibody) at dilution of 1:50 and Rhodamine-Goat anti-Mouse IgG.