

Nur für Forschungszwecke

# EIF3M Monoklonaler Antikörper

Katalog-Nr.:66025-1-Ig



## Allgemeine Informationen

<b>Katalog-Nr.:</b> 66025-1-Ig	<b>GenBank-Zugangsnummer:</b> BC019103	<b>Reinigungsmethode:</b> Protein-A-Reinigung
<b>Größe:</b> 150ul , Konzentration: 1000 µg/ml von10480 Nanodrop und 680 µg/ml durch die Bradford-Methode mit BSA als Standard;	<b>GeneID (NCBI):</b> 2A12B2	<b>CloneNo.:</b> 2A12B2
<b>Wirt:</b> Maus	<b>Vollständiger Name:</b> eukaryotic translation initiation factor 3, subunit M	<b>Empfohlene Verdünnungen:</b> WB 1:2000-1:10000 IHC 1:1000-1:4000 IF 1:50-1:500
<b>Isotyp:</b> IgG2a	<b>Berechnete Masse:</b> 374 aa, 43 kDa	
<b>Immunogen Katalognummer:</b> AG17965	<b>Beobachtete Masse:</b> 35-43 kDa	

## Anwendungen

<b>Geprüfte Anwendungen:</b> IF, IHC, WB, ELISA	<b>Positivkontrollen:</b>
<b>Getestete Reaktivität:</b> Human, Maus, Ratte	<b>WB :</b> HeLa-Zellen, HEK-293-Zellen, HepG2-Zellen, Jurkat-Zellen, K-562-Zellen, MCF-7-Zellen, NIH/3T3- Zellen, PC-12-Zellen, RAW 264.7-Zellen
<b>Hinweis-IHC: Antigenmaskierung mit TE- Puffer pH 9,0 empfohlen. (*) Wahlweise kann die Antigenmaskierung auch mit Citratpuffer pH 6,0 erfolgen.</b>	<b>IHC :</b> humanes Kolonkarzinomgewebe, humanes Zervixkarzinomgewebe
	<b>IF :</b> MCF-7-Zellen,

## Hintergrundinformationen

EIF3M gene encodes eukaryotic translation initiation factor (eIF) subunit M, also called GA17 or PCID1. eIF-3 complex is required for several steps in the initiation of protein synthesis, and recent studies indicate that regulation of oncogene expression and neoplastic transformation are controlled by eIF subunits. The most uncharacterized non-core subunit EIF3M was confirmed to be highly expressed in human cancer cell lines and colon cancer patient tissues and mediate regulation of tumorigenesis-related genes in human colon cancer.

## Lagerung

**Lagerungsbedingungen:**  
Bei -20°C lagern. Nach dem Versand ein Jahr lang stabil  
**Lagerungspuffer:**  
PBS mit 0.02% Natriumazid und 50% Glycerin pH 7.3.  
**Aliquotieren ist nicht notwendig bei -20°C Lagerung**

\*\*\* 20ul-Größen enthalten 0.1% BSA

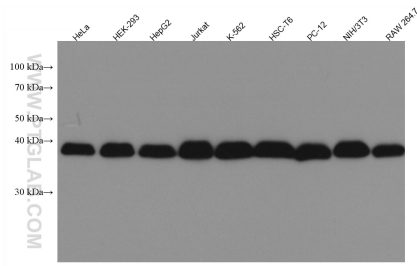
For technical support and original validation data for this product please contact:

T: 1 (888) 4PTGLAB (1-888-478-4522) (toll free  
in USA), or 1(312) 455-8498 (outside USA)

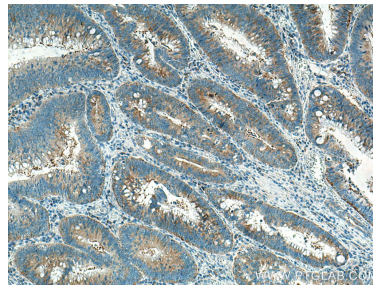
E: proteintech@ptglab.com  
W: ptglab.com

This product is exclusively available under Proteintech Group brand and is not available to purchase from any other manufacturer.

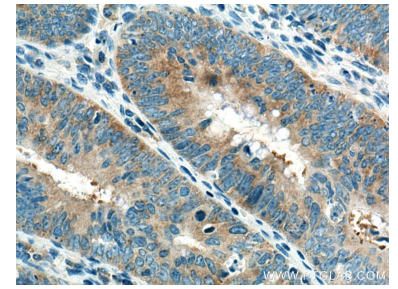
## Ausgewählte Validierungsdaten



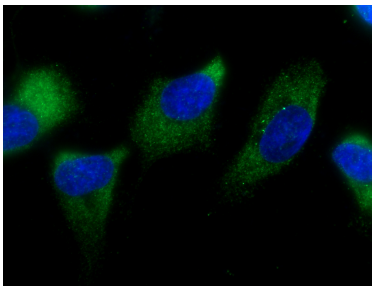
Various lysates were subjected to SDS PAGE followed by western blot with 66025-1-Ig (EIF3M antibody) at dilution of 1:5000 incubated at room temperature for 1.5 hours.



Immunohistochemical analysis of paraffin-embedded human colon cancer tissue slide using 66025-1-Ig (EIF3M antibody) at dilution of 1:2000 (under 10x lens). Heat mediated antigen retrieval with Tris-EDTA buffer (pH 9.0).



Immunohistochemical analysis of paraffin-embedded human colon cancer tissue slide using 66025-1-Ig (EIF3M antibody) at dilution of 1:2000 (under 40x lens). Heat mediated antigen retrieval with Tris-EDTA buffer (pH 9.0).



Immunofluorescent analysis of (-20°C Ethanol) fixed MCF-7 cells using 66025-1-Ig (EIF3M antibody), at dilution of 1:200 and CoraLite® 488-Conjugated AffiniPure Goat Anti-Mouse IgG(H+L).