

Nur für Forschungszwecke

# Alpha Tubulin Monoklonaler Antikörper



Katalog-Nr.: 66031-1-Ig **696 Publikationen**

## Allgemeine Informationen

<b>Katalog-Nr.:</b> 66031-1-Ig	<b>GenBank-Zugangsnummer:</b> BC009314	<b>Reinigungsmethode:</b> Protein-A-Reinigung
<b>Größe:</b> 150ul, Konzentration: 1000 µg/ml von 10376 Nanodrop;	<b>GeneID (NCBI):</b> 10376	<b>CloneNo.:</b> 1E4C11
<b>Wirt:</b> Maus	<b>Vollständiger Name:</b> tubulin, alpha 1b	<b>Empfohlene Verdünnungen:</b> WB 1:20000-1:100000 IP 0.5-4.0 µg für IP und 1:500-1:2000 für WB
<b>Isotyp:</b> IgG2b	<b>Berechnete Masse:</b> 50 kDa	<b>IHC 1:200-1:1000</b>
<b>Immunogen Katalognummer:</b> AG18034	<b>Beobachtete Masse:</b> 50-55 kDa	<b>IF 1:50-1:500</b>

## Anwendungen

**Geprüfte Anwendungen:**  
FC, IF, IHC, IP, WB, ELISA

**In Publikationen genannte Anwendungen:**  
CoIP, IF, IHC, IP, WB

**Getestete Reaktivität:**  
Human, Hund, Maus, Ratte

**Zitierte Arten:**  
Affe, Drosophila, Hausschwein, Huhn, Human, Hund, Kaninchen, Maus, Ratte, Rind

**Hinweis-IHC: Antigenmaskierung mit TE-Puffer pH 9,0 empfohlen. (\*) Wahlweise kann die Antigenmaskierung auch mit Citratpuffer pH 6,0 erfolgen.**

**Positivkontrollen:**

**WB:** HeLa-Zellen, 4T1-Zellen, HEK-293-Zellen, HepG2-Zellen, Jurkat-Zellen, K-562-Zellen, NIH/3T3-Zellen

**IP:** HeLa-Zellen,

**IHC:** humanes Tonsillitissgewebe, humanes Kolonkarzinomgewebe, humanes Leberkarzinomgewebe

**IF:** HepG2-Zellen, Rattenhirngewebe

## Hintergrundinformationen

There are five tubulins in human cells: alpha, beta, gamma, delta, and epsilon. Tubulins are conserved across species. They form heterodimers, which multimerize to form a microtubule filament. An alpha and beta tubulin heterodimer is the basic structural unit of microtubules. The heterodimer does not come apart once formed. The alpha and beta tubulins, which are each about 55 kDa MW, are homologous but not identical. Alpha tubulin is useful for scientists across fields as an internal control due to its high, ubiquitous expression pattern. Tubulin expression may vary according to resistance to antimicrobial and antimetabolic drugs. This antibody specifically recognizes Tubulin Alpha.

## Bemerkenswerte Veröffentlichungen

Verfasser	Pubmed ID	Journal	Anwendung
Sirwan Sleman	36179070	Viral Immunol	WB
Pengcheng Ma	36179027	Sci Adv	WB
Weï Wen	33133097	Front Immunol	WB

## Lagerung

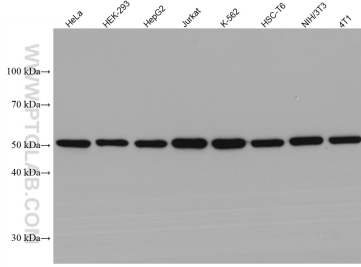
**Lagerungsbedingungen:**  
Bei -20°C lagern. Nach dem Versand ein Jahr lang stabil  
**Lagerungspuffer:**  
PBS mit 0.02% Natriumazid und 50% Glycerin pH 7.3.  
Aliquotieren ist nicht notwendig bei -20°C Lagerung

**\*\*\* 20ul-Größen enthalten 0.1% BSA**

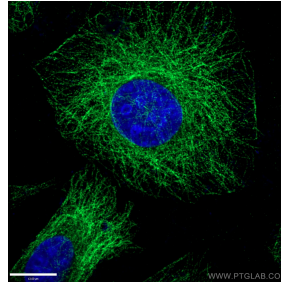
For technical support and original validation data for this product please contact:  
T: 1 (888) 4PTGLAB (1-888-478-4522) (toll free in USA), or 1(312) 455-8498 (outside USA)  
E: proteintech@ptglab.com  
W: ptglab.com

**This product is exclusively available under Proteintech Group brand and is not available to purchase from any other manufacturer.**

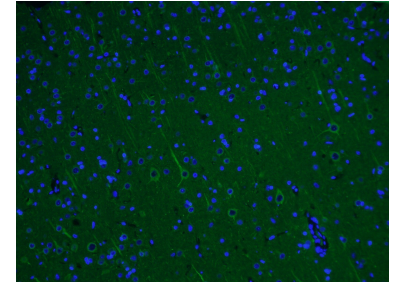
## Ausgewählte Validierungsdaten



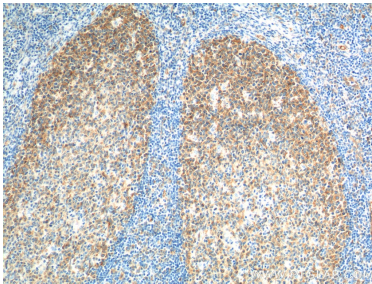
Various lysates were subjected to SDS PAGE followed by western blot with 66031-1-Ig (Alpha Tubulin antibody) at dilution of 1:200000 incubated at room temperature for 1.5 hours.



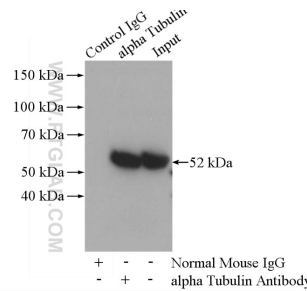
Immunofluorescent analysis of (-20°C Ethanol) fixed HepG2 cells using 66031-1-Ig (alpha Tubulin antibody) at dilution of 1:100 and Alexa Fluor 488-conjugated AffiniPure Goat Anti-Mouse IgG(H+L).



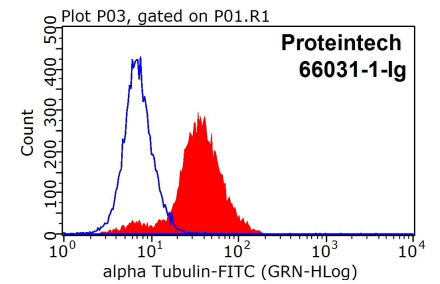
Immunofluorescent analysis of (4% PFA) fixed rat brain tissue using 66031-1-Ig (alpha Tubulin antibody) at dilution of 1:100 and CoraLite488-Conjugated AffiniPure Goat Anti-Mouse IgG(H+L).



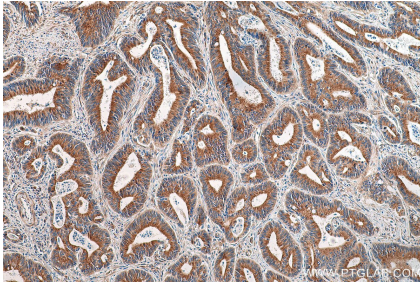
Immunohistochemical analysis of paraffin-embedded human tonsillitis tissue slide using 66031-1-Ig (alpha Tubulin antibody) at dilution of 1:200 (under 10x lens). Heat mediated antigen retrieval with Tris-EDTA buffer (pH 9.0).



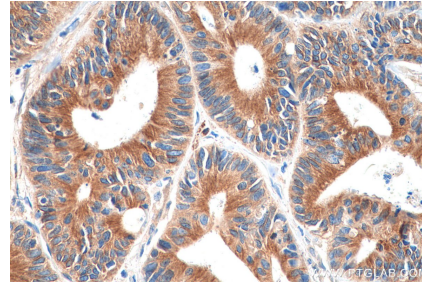
IP Result of anti-alpha Tubulin (IP:66031-1-Ig, 5ug; Detection:11224-1-AP 1:1000) with HeLa cells lysate 2800ug.



1X10<sup>6</sup> HeLa cells were stained with 0.05 ug Anti-Human Alpha Tubulin (66031-1-Ig, Clone:1E4C11) and FITC-Goat anti-mouse IgG at dilution 1:100 (red), or stained with 0.05 ug isotype control and FITC-Goat anti-mouse IgG at dilution 1:100 (blue). Cells were fixed with 90% MeOH and permeabilized with 0.1% TritonX-100.



Immunohistochemical analysis of paraffin-embedded human colon cancer tissue slide using 66031-1-Ig (Alpha Tubulin antibody) at dilution of 1:1000 (under 10x lens). Heat mediated antigen retrieval with Tris-EDTA buffer (pH 9.0).



Immunohistochemical analysis of paraffin-embedded human colon cancer tissue slide using 66031-1-Ig (Alpha Tubulin antibody) at dilution of 1:1000 (under 40x lens). Heat mediated antigen retrieval with Tris-EDTA buffer (pH 9.0).