

Nur für Forschungszwecke

# Annexin A2 Monoklonaler Antikörper



Katalog-Nr.:66035-1-Ig

Vorgestelltes Produkt

13 Publikationen

## Allgemeine Informationen

<b>Katalog-Nr.:</b> 66035-1-Ig	<b>GenBank-Zugangsnummer:</b> BC016774	<b>Reinigungsmethode:</b> Protein-A-Reinigung
<b>Größe:</b> 150ul , Konzentration: 2000 µg/ml von302 Nanodrop und 1000 µg/ml durch die Bradford-Methode mit BSA als Standard;	<b>GeneID (NCBI):</b> annexin A2	<b>CloneNo.:</b> 1C1E12
<b>Wirt:</b> Maus	<b>Vollständiger Name:</b> annexin A2	<b>Empfohlene Verdünnungen:</b> WB 1:5000-1:50000 IHC 1:5000-1:20000 IF 1:250-1:1000
<b>Isotyp:</b> IgG2a	<b>Berechnete Masse:</b> 339 aa, 39 kDa	
<b>Immunogen Katalognummer:</b> AG16654	<b>Beobachtete Masse:</b> 39 kDa	

## Anwendungen

<b>Geprüfte Anwendungen:</b> FC, IF, IHC, WB, ELISA	<b>Positivkontrollen:</b> <b>WB :</b> K-562-Zellen, 4T1-Zellen, A431-Zellen, A549-Zellen, HEK-293-Zellen, HeLa-Zellen, HepG2-Zellen, humanes Hirngewebe, MCF-7-Zellen, NIH/3T3-Zellen <b>IHC :</b> humanes Mammakarzinomgewebe, humanes Hautkrebsgewebe <b>IF :</b> T-47D-Zellen, HeLa-Zellen
<b>In Publikationen genannte Anwendungen:</b> CoIP, IF, IHC, IP, WB	
<b>Getestete Reaktivität:</b> Human, Maus, Ratte	
<b>Zitierte Arten:</b> Human, Maus, Ratte	
<b>Hinweis-IHC: Antigendemaskierung mit TE-Puffer pH 9,0 empfohlen. (*) Wahlweise kann die Antigendemaskierung auch mit Citratpuffer pH 6,0 erfolgen.</b>	

## Hintergrundinformationen

Annexin A2 (ANXA2), also named Annexin-2 or Lipocortin II, is a Ca<sup>2+</sup> binding protein that is up-regulated in virally transformed cell lines and human tumors. This calcium-regulated membrane-binding protein, whose affinity for calcium is greatly enhanced by anionic phospholipids, may cross-link plasma membrane phospholipids with actin and the cytoskeleton and be involved with exocytosis. Heat-stress response may also involve Annexin-2.

## Bemerkenswerte Veröffentlichungen

Verfasser	Pubmed ID	Journal	Anwendung
Lei Wang	32882585	Biomed Pharmacother	WB,IHC,IF,CoIP
Haoran Lin	36367512	Neurosci Lett	WB
Jing Gu	30341243	Biosci Rep	WB

## Lagerung

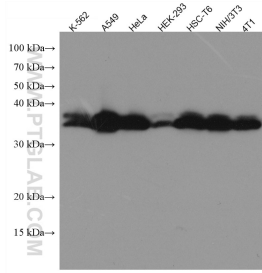
**Lagerungsbedingungen:**  
Bei -20°C lagern. Nach dem Versand ein Jahr lang stabil  
**Lagerungspuffer:**  
PBS mit 0.02% Natriumazid und 50% Glycerin pH 7.3.  
Aliquotieren ist nicht notwendig bei -20°C Lagerung

\*\*\* 20ul-Größen enthalten 0.1% BSA

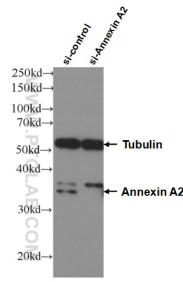
For technical support and original validation data for this product please contact:  
T: 1 (888) 4PTGLAB (1-888-478-4522) (toll free in USA), or 1(312) 455-8498 (outside USA)  
E: proteintech@ptglab.com  
W: ptglab.com

This product is exclusively available under Proteintech Group brand and is not available to purchase from any other manufacturer.

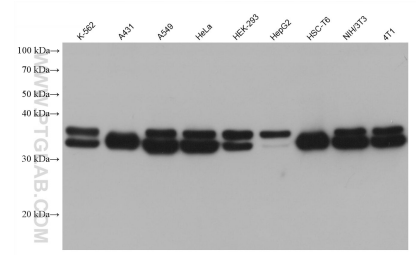
## Ausgewählte Validierungsdaten



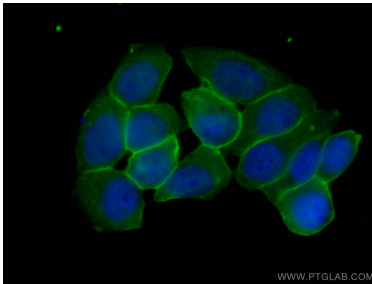
Various lysates were subjected to SDS PAGE followed by western blot with 66035-1-Ig (Annexin A2 antibody) at dilution of 1:20000 incubated at room temperature for 1.5 hours.



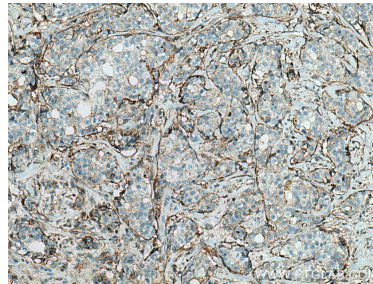
WB result of Annexin A2 antibody (66035-1-Ig; 1:20000; incubated at room temperature for 1.5 hours) with sh-Control and sh-Annexin A2 transfected HEK-293 cells.



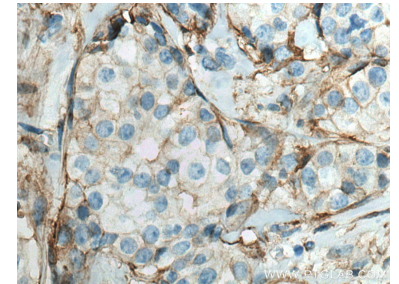
Various lysates were subjected to SDS PAGE followed by western blot with 66035-1-Ig (Annexin A2 antibody) at dilution of 1:20000 incubated at room temperature for 1.5 hours.



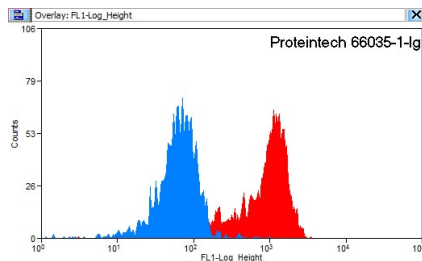
Immunofluorescent analysis of (-20°C Ethanol) fixed T-47D cells using 66035-1-Ig (Annexin A2 antibody), at dilution of 1:500 and CoraLite®488-Conjugated AffiniPure Goat Anti-Mouse IgG(H+L).



Immunohistochemical analysis of paraffin-embedded human breast cancer tissue slide using 66035-1-Ig (Annexin A2 antibody) at dilution of 1:10000 (under 10x lens). Heat mediated antigen retrieval with Tris-EDTA buffer (pH 9.0).



Immunohistochemical analysis of paraffin-embedded human breast cancer tissue slide using 66035-1-Ig (Annexin A2 antibody) at dilution of 1:10000 (under 40x lens). Heat mediated antigen retrieval with Tris-EDTA buffer (pH 9.0).



1X10<sup>6</sup> K-562 cells were stained with 0.2ug Annexin A2 antibody (66035-1-Ig, red) and control antibody (blue). Fixed with 90% MeOH blocked with 3% BSA (30 min). Alexa Fluor 488-conjugated AffiniPure Goat Anti-Mouse IgG(H+L) with dilution 1:1500.