

Nur für Forschungszwecke

HSP60 Monoklonaler Antikörper

Katalog-Nr.: 66041-1-Ig **24 Publikationen**



Allgemeine Informationen

Katalog-Nr.: 66041-1-Ig	GenBank-Zugangsnummer: BC003030	Reinigungsmethode: Protein-A-Reinigung
Größe: 150ul, Konzentration: 1000 µg/ml von 3329 Nanodrop und 490 µg/ml durch die Bradford-Methode mit BSA als Standard;	GeneID (NCBI): heat shock 60kDa protein 1 (chaperonin)	CloneNo.: 2F10E7
Wirt: Maus	Vollständiger Name: heat shock 60kDa protein 1 (chaperonin)	Empfohlene Verdünnungen: WB 1:5000-1:50000 IP 0.5-4.0 µg für IP und 1:1000-1:4000 für WB
Isotyp: IgG1	Berechnete Masse: 61 kDa	IHC 1:50-1:2000
Immunogen Katalognummer: AG7848	Beobachtete Masse: 60 kDa	IF 1:50-1:500

Anwendungen

Geprüfte Anwendungen: FC, IF, IHC, IP, WB, ELISA	Positivkontrollen:
In Publikationen genannte Anwendungen: ELISA, IF, IP, WB	WB: HeLa-Zellen, HEK-293-Zellen, Jurkat-Zellen, NIH/3T3-Zellen
Getestete Reaktivität: Human, Maus, Ratte	IP: Mausebergewebe,
Zitierte Arten: Hausschwein, Human, Maus, Ratte	IHC: humanes Ovarialkarzinomgewebe, humanes Hautkrebsgewebe, humanes Hodengewebe, humanes Milzgewebe, humanes Tonsillitisgewebe
Hinweis-IHC: Antigenmaskierung mit TE- Puffer pH 9,0 empfohlen. (*) Wahlweise kann die Antigenmaskierung auch mit Citratpuffer pH 6,0 erfolgen.	IF: HeLa-Zellen, Neuro-2a-Zellen

Hintergrundinformationen

HSPD1, also known as HSP60, belongs to the chaperonin family and acts as a chaperone to enhance cell survival under physiological stresses. Hsp60 has been shown to be connected with many aspects of cell functions such as protein folding and assembling of polypeptide chains in mitochondria. Recently it has been reported that HSP60 is associated with apoptosis or inhibition of cancer cell growth. (21822415)

Bemerkenswerte Veröffentlichungen

Verfasser	Pubmed ID	Journal	Anwendung
Boyden Myers	36142714	Int J Mol Sci	IF
Jianli Tang	36106732	mBio	WB,IF,IP
Na Li	34557266	Oxid Med Cell Longev	IP

Lagerung

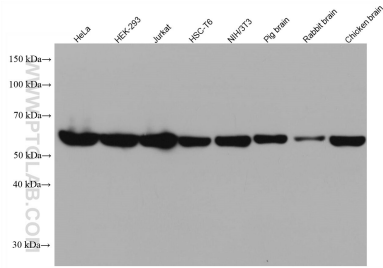
Lagerungsbedingungen:
Bei -20°C lagern. Nach dem Versand ein Jahr lang stabil
Lagerungspuffer:
PBS mit 0.02% Natriumazid und 50% Glycerin pH 7.3.
Aliquotieren ist nicht notwendig bei -20°C Lagerung

*** 20ul-Größen enthalten 0.1% BSA

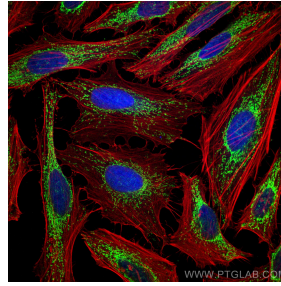
For technical support and original validation data for this product please contact:
T: 1 (888) 4PTGLAB (1-888-478-4522) (toll free in USA), or 1(312) 455-8498 (outside USA)
E: proteintech@ptglab.com
W: ptglab.com

This product is exclusively available under Proteintech Group brand and is not available to purchase from any other manufacturer.

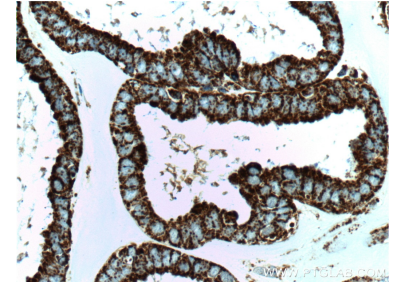
Ausgewählte Validierungsdaten



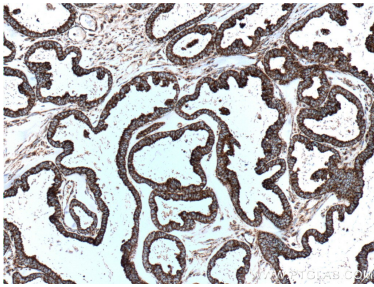
Various lysates were subjected to SDS PAGE followed by western blot with 66041-1-Ig (HSP60 antibody) at dilution of 1:20000 incubated at room temperature for 1.5 hours.



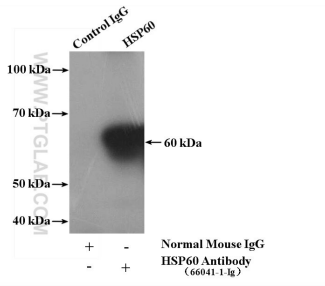
Immunofluorescent analysis of (4% PFA) fixed HeLa cells using HSP60 antibody (66041-1-Ig, Clone: 2F10E7) at dilution of 1:100 and CoraLite®488-Conjugated AffiniPure Goat Anti-Mouse IgG(H+L), (CL594-Phalloidin, red).



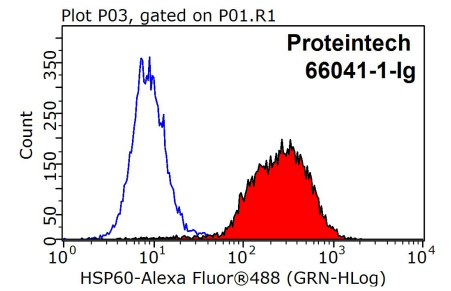
Immunohistochemical analysis of paraffin-embedded human ovary tumor tissue slide using 66041-1-Ig (HSP60 antibody at dilution of 1:500 (under 40x lens). Heat mediated antigen retrieval with Tris-EDTA buffer (pH 9.0).



Immunohistochemical analysis of paraffin-embedded human ovary tumor tissue slide using 66041-1-Ig (HSP60 antibody at dilution of 1:500 (under 10x lens). Heat mediated antigen retrieval with Tris-EDTA buffer (pH 9.0).



IP Result of anti-HSP60 (IP:66041-1-Ig, 5ug; Detection:66041-1-Ig 1:2000) with mouse liver tissue lysate 4000ug.



1X10⁶ HeLa cells were stained with 0.2ug HSP60 antibody (66041-1-Ig, red) and control antibody (blue). Fixed with 90% MeOH blocked with 3% BSA (30 min). Alexa Fluor 488-conjugated AffiniPure Goat Anti-Mouse IgG(H+L) with dilution 1:1000.