

Nur für Forschungszwecke

Fibronectin Monoklonaler Antikörper



Katalog-Nr.:66042-1-Ig

Vorgestelltes Produkt

61 Publikationen

Allgemeine Informationen

Katalog-Nr.:
66042-1-Ig

Größe:
150ul, Konzentration: 1000 µg/ml von2335
Nanodrop und 516 µg/ml durch die
Bradford-Methode mit BSA als
Standard;

Wirt:
Maus

Isotyp:
IgG1

Immunogen Katalognummer:
AG8016

GenBank-Zugangsnummer:
BC005858

GeneID (NCBI):

Vollständiger Name:
fibronectin 1

Berechnete Masse:
2386 aa, 263 kDa

Beobachtete Masse:
263 kDa

Reinigungsmethode:
Protein-G-Reinigung

CloneNo.:
1G10F9

Empfohlene Verdünnungen:
WB 1:2000-1:12000
IP 0.5-4.0 µg für IP und 1:500-1:1000
für WB
IHC 1:300-1:1200
IF 1:50-1:500

Anwendungen

Geprüfte Anwendungen:

IF, IHC, IP, WB, ELISA

In Publikationen genannte Anwendungen:

CoIP, FC, IF, IHC, WB

Getestete Reaktivität:

Human, Maus, Ratte

Zitierte Arten:

Human, Maus, Ratte

Hinweis-IHC: Antigenmaskierung mit TE-Puffer pH 9,0 empfohlen. (*) Wahlweise kann die Antigenmaskierung auch mit Citratpuffer pH 6,0 erfolgen.

Positivkontrollen:

WB : humanes Plasmagewebe, humanes Hirngewebe, humanes Lebergewebe, Rattenserumgewebe

IP : humanes Plasmagewebe,

IHC : humanes Kolonkarzinomgewebe, humanes Mammakarzinomgewebe

IF : NIH/3T3-Zellen, humanes Kolonkarzinomgewebe

Hintergrundinformationen

Fibronectin 1 (FN1) is a high molecular weight glycoprotein which exists in both a soluble form in plasma (plasma FN1) and other body fluids and an insoluble form in the extracellular matrix (cellular FN1). Plasma FN1 (dimeric form) is secreted by hepatocytes. Cellular FN (dimeric or cross-linked multimeric forms), made by fibroblasts, epithelial and other cell types, is deposited as fibrils in the extracellular matrix. FN1 binds to cell surfaces through integrins and to various compounds including collagen, fibrin and heparin. It is involved in cell adhesion and migration processes including embryogenesis, wound healing, hemostasis, host defense, and metastasis. (PMID: 7276612; 12244123; 12847088)

Bemerkenswerte Veröffentlichungen

Verfasser	Pubmed ID	Journal	Anwendung
Fan Zhang	34597680	Exp Cell Res	IF,IHC,WB
Yao Liu	36169036	Phytochemistry	WB
Silvia Specia	34529707	PLoS One	WB

Lagerung

Lagerungsbedingungen:

Bei -20°C lagern. Nach dem Versand ein Jahr lang stabil

Lagerungspuffer:

PBS mit 0.02% Natriumazid und 50% Glycerin pH 7.3.

Aliquotieren ist nicht notwendig bei -20°C Lagerung

*** 20ul-Größen enthalten 0.1% BSA

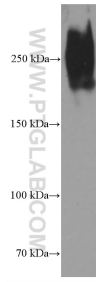
For technical support and original validation data for this product please contact:

T: 1 (888) 4PTGLAB (1-888-478-4522) (toll free in USA), or 1(312) 455-8498 (outside USA)

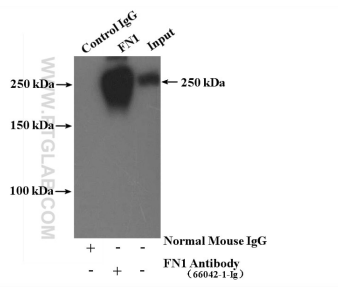
E: proteintech@ptglab.com
W: ptglab.com

This product is exclusively available under Proteintech Group brand and is not available to purchase from any other manufacturer.

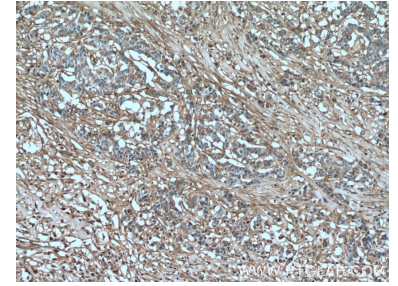
Ausgewählte Validierungsdaten



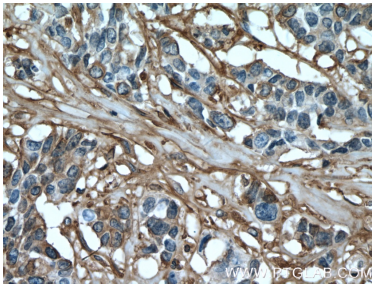
human plasma were subjected to SDS PAGE followed by western blot with 66042-1-Ig (Fibronectin antibody at dilution of 1:6000 incubated at room temperature for 1.5 hours.



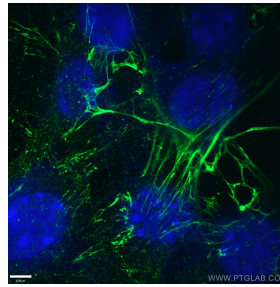
IP Result of anti-Fibronectin (IP:66042-1-Ig, 5ug; Detection:66042-1-Ig 1:500) with human plasma lysate 4000ug.



Immunohistochemical analysis of paraffin-embedded human colon cancer tissue slide using 66042-1-Ig (Fibronectin antibody) at dilution of 1:600 (under 10x lens. Heat mediated antigen retrieval with Tris-EDTA buffer (pH 9.0).



Immunohistochemical analysis of paraffin-embedded human colon cancer tissue slide using 66042-1-Ig (Fibronectin antibody) at dilution of 1:600 (under 40x lens. Heat mediated antigen retrieval with Tris-EDTA buffer (pH 9.0).



Immunofluorescent analysis of (-20°C Ethanol) fixed NIH/3T3 cells using 66042-1-Ig(Fibronectin antibody) at dilution of 1:100 and Alexa Fluor 488-conjugated AffiniPure Goat Anti-Mouse IgG(H+L).