

Allgemeine Informationen

Katalog-Nr.: 66043-1-Ig	GenBank-Zugangsnummer: BC000235	Reinigungsmethode: Protein-G-Reinigung
Größe: 150ul, Konzentration: 1560 µg/ml durch die Bradford-Methode mit BSA als Standard;	GeneID (NCBI): 9361	CloneNo.: 1C6C12
Wirt: Maus	Vollständiger Name: lon peptidase 1, mitochondrial	Empfohlene Verdünnungen: WB 1:1000-1:5000 IHC 1:400-1:1600 IF 1:10-1:100
Isotyp: IgG1	Berechnete Masse: 106 kDa	
Immunogen Katalognummer: AG7306	Beobachtete Masse: 100 kDa	

Anwendungen

Geprüfte Anwendungen:

IF, IHC, WB, ELISA

In Publikationen genannte Anwendungen:

IHC, WB

Getestete Reaktivität:

Human, Maus, Ratte

Zitierte Arten:

Human, Maus

Hinweis-IHC: Antigenmaskierung mit TE-Puffer pH 9,0 empfohlen. (*) Wahlweise kann die Antigenmaskierung auch mit Citratpuffer pH 6,0 erfolgen.

Positivkontrollen:

WB : ROS1728-Zellen, HEK-293-Zellen, humanes Herzgewebe, humanes Lebergewebe, Jurkat-Zellen, L02-Zellen, NIH/3T3-Zellen, RAW 264.7-Zellen

IHC : humanes Lungenkarzinomgewebe, humanes Herzgewebe, humanes Lebergewebe

IF : C6-Zellen,

Hintergrundinformationen

LONP1(Lon protease homolog, mitochondrial) is also named as LONP, LONHS, HLON, LON, PRSS15, PIM1, MGC1498 and belongs to the peptidase S16 family. It seems to play a major role in the elimination of oxidatively modified proteins in the mitochondrial matrix(PMID:18021745). LONP1, also a nuclearly encoded and mitochondrially located stress-responsive protease, is involved in heme-mediated ALAS-1 turnover(PMID:21659532). It recognizes specific surface determinants or folds, initiates proteolysis at solvent-accessible sites, and generates unfolded polypeptides that are then processively degraded(PMID:15870080).

Bemerkenswerte Veröffentlichungen

Verfasser	Pubmed ID	Journal	Anwendung
Yifei Liu	37095454	Mol Med	IHC, WB
Elianne P Bulthuis	36825437	EMBO J	WB

Lagerung

Lagerungsbedingungen:

Bei -20°C lagern. Nach dem Versand ein Jahr lang stabil

Lagerungspuffer:

PBS mit 0.02% Natriumazid und 50% Glycerin pH 7.3.

Aliquotieren ist nicht notwendig bei -20°C Lagerung

***** 20ul-Größen enthalten 0.1% BSA**

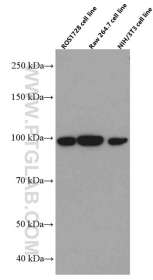
For technical support and original validation data for this product please contact:

T: 1 (888) 4PTGLAB (1-888-478-4522) (toll free in USA), or 1(312) 455-8498 (outside USA)

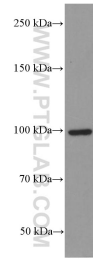
E: proteintech@ptglab.com
 W: ptglab.com

This product is exclusively available under Proteintech Group brand and is not available to purchase from any other manufacturer.

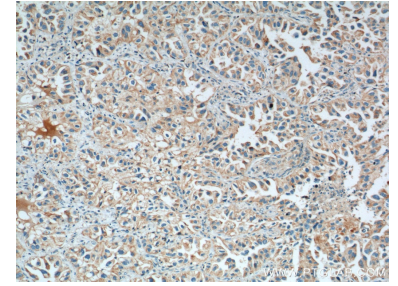
Ausgewählte Validierungsdaten



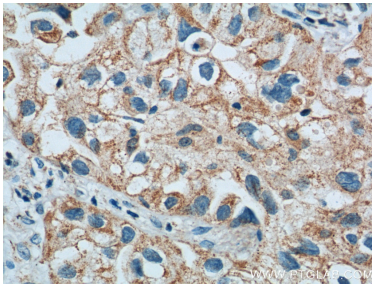
Various lysates were subjected to SDS PAGE followed by western blot with 66043-1-Ig (LONP1 antibody) at dilution of 1:5000 incubated at room temperature for 1.5 hours.



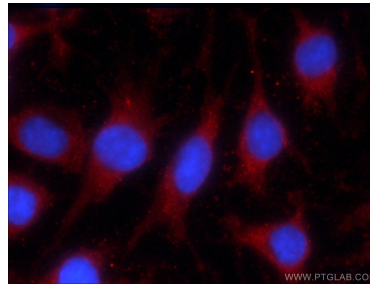
Jurkat cells were subjected to SDS PAGE followed by western blot with 66043-1-Ig (LONP1 Antibody) at dilution of 1:5000 incubated at room temperature for 1.5 hours.



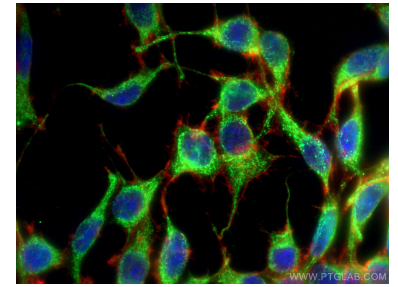
Immunohistochemical analysis of paraffin-embedded human lung cancer tissue slide using 66043-1-Ig (LONP1 Antibody) at dilution of 1:800 (under 10x lens). Heat mediated antigen retrieval with Tris-EDTA buffer (pH 9.0).



Immunohistochemical analysis of paraffin-embedded human lung cancer tissue slide using 66043-1-Ig (LONP1 Antibody) at dilution of 1:800 (under 40x lens). Heat mediated antigen retrieval with Tris-EDTA buffer (pH 9.0).



Immunofluorescent analysis of C6 cells using 66043-1-Ig (LONP1 antibody) at dilution of 1:25 and Rhodamine-Goat anti-Mouse IgG.



Immunofluorescent analysis of (-20°C Ethanol) fixed C6 cells using LONP1 antibody (66043-1-Ig, Clone: 1C6C12) at dilution of 1:200 and CoraLite@488-Conjugated AffiniPure Goat Anti-Mouse IgG(H+L), CL594-phalloidone (red).