

Allgemeine Informationen

Katalog-Nr.:

66044-1-Ig

Größe:

150ul , Konzentration: 1000 µg/ml von79888

Nanodrop und 508 µg/ml durch die Bradford-Methode mit BSA als Standard;

Wirt:

Maus

Isotyp:

IgG2b

Immunogen Katalognummer:

AG9060

GenBank-Zugangsnummer:

BC020166

GeneID (NCBI):

79888

Vollständiger Name:

lysophosphatidylcholine acyltransferase 1

Berechnete Masse:

534 aa, 59 kDa

Beobachtete Masse:

55 kDa

Reinigungsmethode:

Protein-A-Reinigung

CloneNo.:

8B6E9

Empfohlene Verdünnungen:

WB 1:5000-1:50000

IHC 1:50-1:500

IF 1:400-1:1600

Anwendungen

Geprüfte Anwendungen:

IF, IHC, WB, ELISA

In Publikationen genannte Anwendungen:

IF, IHC, WB

Getestete Reaktivität:

Human, Maus, Ratte

Zitierte Arten:

Human, Maus, Ratte

Hinweis-IHC: Antigendemaskierung mit TE-Puffer pH 9,0 empfohlen. (*) Wahlweise kann die Antigendemaskierung auch mit Citratpuffer pH 6,0 erfolgen.

Positivkontrollen:

WB : LNCaP-Zellen, 4T1-Zellen, HEK-293-Zellen, HeLa-Zellen, HepG2-Zellen, K-562-Zellen, MCF-7-Zellen, NIH/3T3-Zellen, PC-12-Zellen, ROS1728-Zellen

IHC : humanes Lungenkarzinomgewebe, humanes Leberkarzinomgewebe

IF : HeLa-Zellen,

Hintergrundinformationen

LPCAT1, also named as AYTL2, PFAAP3 and LysoPAFAT, belongs to the 1-acyl-sn-glycerol-3-phosphate acyltransferase family. It is a key enzyme for remodeling phospholipids, including phosphatidylcholine. The expression level of LPCAT1 is able to differentiate prostate cancer from noncancerous prostatic changes, and correlates to the tumor grade of prostate cancer. LPCAT1 possesses both acyltransferase and acetyltransferase activities. It mediates the conversion of 1-acyl-sn-glycerol-3-phosphocholine (LPC) into phosphatidylcholine (PC).

Bemerkenswerte Veröffentlichungen

Verfasser	Pubmed ID	Journal	Anwendung
Mingyue Tao	34518524	Cell Death Dis	WB,IF,IHC
Shotaro Yamano	36056156	Sci Rep	IHC
Yufei Liu	34221998	Front Oncol	IHC, WB

Lagerung

Lagerungsbedingungen:

Bei -20°C lagern. Nach dem Versand ein Jahr lang stabil

Lagerungspuffer:

PBS mit 0.02% Natriumazid und 50% Glycerin pH 7.3.

Aliquotieren ist nicht notwendig bei -20°C Lagerung

***** 20ul-Größen enthalten 0.1% BSA**

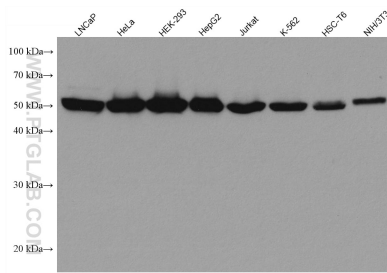
For technical support and original validation data for this product please contact:

T: 1 (888) 4PTGLAB (1-888-478-4522) (toll free in USA), or 1(312) 455-8498 (outside USA)

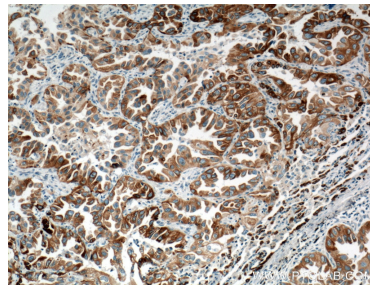
E: proteintech@ptglab.com
 W: ptglab.com

This product is exclusively available under Proteintech Group brand and is not available to purchase from any other manufacturer.

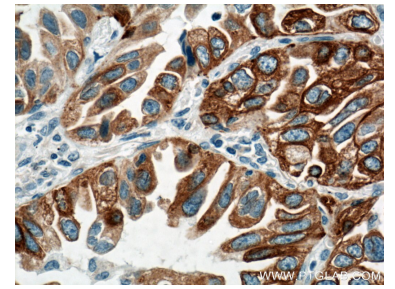
Ausgewählte Validierungsdaten



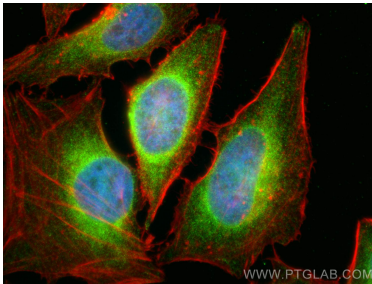
Various lysates were subjected to SDS PAGE followed by western blot with 66044-1-Ig (LPCAT1 antibody) at dilution of 1:10000 incubated at room temperature for 1.5 hours.



Immunohistochemical analysis of paraffin-embedded human lung cancer tissue slide using 66044-1-Ig (LPCAT1 Antibody) at dilution of 1:200 (under 10x lens). Heat mediated antigen retrieval with Tris-EDTA buffer (pH 9.0).



Immunohistochemical analysis of paraffin-embedded human lung cancer tissue slide using 66044-1-Ig (LPCAT1 Antibody) at dilution of 1:200 (under 40x lens). Heat mediated antigen retrieval with Tris-EDTA buffer (pH 9.0).



Immunofluorescent analysis of (4% PFA) fixed HeLa cells using LPCAT1 antibody (66044-1-Ig, Clone: 8B6E9) at dilution of 1:800 and CoraLite®488-Conjugated AffiniPure Goat Anti-Mouse IgG(H+L), CL594-Phalloidin (red).