

Nur für Forschungszwecke

Cyclophilin B Monoklonaler Antikörper



Katalog-Nr.:66047-1-Ig

Vorgestelltes Produkt

Allgemeine Informationen

Katalog-Nr.:

66047-1-Ig

Größe:

150ul , Konzentration: 1400 µg/ml von5479

Nanodrop und 1000 µg/ml durch die Bradford-Methode mit BSA als Standard;

Wirt:

Maus

Isotyp:

IgG2a

Immunogen Katalognummer:

AG17957

GenBank-Zugangsnummer:

BC032138

GeneID (NCBI):

5479

Vollständiger Name:

peptidylprolyl isomerase B (cyclophilin B)

Berechnete Masse:

216 aa, 24 kDa

Beobachtete Masse:

19-24 kDa

Reinigungsmethode:

Protein-A-Reinigung

CloneNo.:

8H4F1

Empfohlene Verdünnungen:

WB 1:1000-1:8000

IHC 1:250-1:1000

IF 1:50-1:500

Anwendungen

Geprüfte Anwendungen:

IF, IHC, WB,ELISA

Getestete Reaktivität:

Human, Maus

Hinweis-IHC: Antigenmaskierung mit TE-Puffer pH 9,0 empfohlen. (*) Wahlweise kann die Antigenmaskierung auch mit Citratpuffer pH 6,0 erfolgen.

Positivkontrollen:

WB : HeLa-Zellen, HEK-293-Zellen, Jurkat-Zellen, MCF-7-Zellen, RAW 264.7-Zellen

IHC : humanes Pankreaskarzinomgewebe,

IF : HeLa-Zellen,

Hintergrundinformationen

PPIB, also named as CYPB, SCYLP, PPIase B and CYP-S1, belongs to the cyclophilin-type PPIase family and PPIase B subfamily. PPIases accelerate the folding of proteins. It catalyzes the cis-trans isomerization of proline imidic peptide bonds in oligopeptides. PPIB is secreted in biological fluids such as blood or milk and binds to a specific receptor present on the human lymphoblastic cell line Jurkat and on human peripheral blood lymphocytes. The full-length of PPIB has 216aa (24 kDa), and a 33aa-signal peptide could be removed in the mature form (about 19 kDa).

Lagerung

Lagerungsbedingungen:

Bei -20°C lagern. Nach dem Versand ein Jahr lang stabil

Lagerungspuffer:

PBS mit 0.02% Natriumazid und 50% Glycerin pH 7.3.

Aliquotieren ist nicht notwendig bei -20°C Lagerung

*** 20ul-Größen enthalten 0.1% BSA

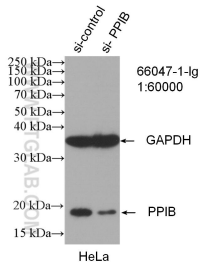
For technical support and original validation data for this product please contact:

T: 1 (888) 4PTGLAB (1-888-478-4522) (toll free in USA), or 1(312) 455-8498 (outside USA)

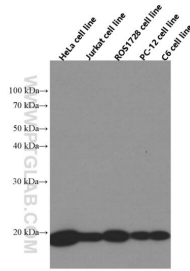
E: proteintech@ptglab.com
W: ptglab.com

This product is exclusively available under Proteintech Group brand and is not available to purchase from any other manufacturer.

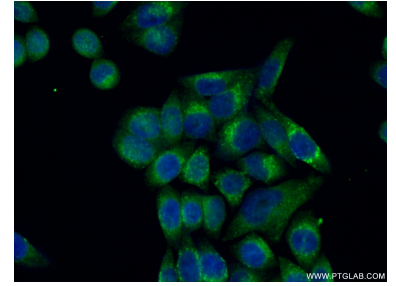
Ausgewählte Validierungsdaten



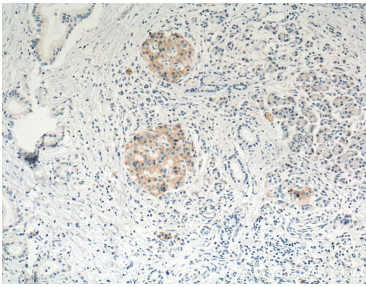
WB result of Cyclophilin B antibody (66047-1-Ig; 1:60000; incubated at room temperature for 1.5 hours) with sh-Control and sh-Cyclophilin B transfected HeLa cells.



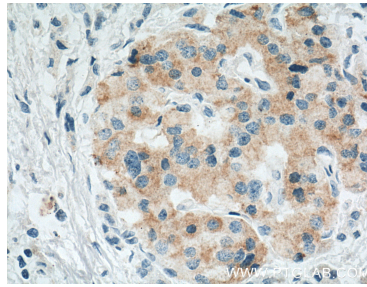
HeLa/Jurkat/ROS1728/PC-12/C6 cells were subjected to SDS PAGE followed by western blot with 66047-1-Ig (Cyclophilin B antibody at dilution of 1:4000 incubated at room temperature for 1.5 hours.



Immunofluorescent analysis of (4% PFA) fixed HeLa cells using 66047-1-Ig(Cyclophilin B antibody) at dilution of 1:50 and Alexa Fluor 488-conjugated AffiniPure Goat Anti-Mouse IgG(H+L).



Immunohistochemical analysis of paraffin-embedded human pancreas cancer tissue slide using 66047-1-Ig (Cyclophilin B antibody at dilution of 1:200 (under 10x lens). Heat mediated antigen retrieval with Tris-EDTA buffer (pH 9.0).



Immunohistochemical analysis of paraffin-embedded human pancreas cancer tissue slide using 66047-1-Ig (Cyclophilin B antibody at dilution of 1:200 (under 40x lens). Heat mediated antigen retrieval with Tris-EDTA buffer (pH 9.0).