

Nur für Forschungszwecke

NOB1 Monoklonaler Antikörper

Katalog-Nr.:66048-1-Ig



Allgemeine Informationen

Katalog-Nr.: 66048-1-Ig	GenBank-Zugangsnummer: BC000050	Reinigungsmethode: Protein-G-Reinigung
Größe: 150ul , Konzentration: 1100 µg/ml von28987 Nanodrop und 1000 µg/ml durch die Bradford-Methode mit BSA als Standard;	GeneID (NCBI): NIN1/RPN12 binding protein 1 homolog (S. cerevisiae)	CloneNo.: 8C11A12
Wirt: Maus	Vollständiger Name: NIN1/RPN12 binding protein 1 homolog (S. cerevisiae)	Empfohlene Verdünnungen: WB 1:1000-1:6000 IHC 1:20-1:200
Isotyp: IgG1	Berechnete Masse: 47 kDa	
Immunogen Katalognummer: AG17907	Beobachtete Masse: 47 kDa	

Anwendungen

Geprüfte Anwendungen: IHC, WB,ELISA	Positivkontrollen: WB : Jurkat-Zellen, humanes Plazenta-Gewebe IHC : humanes Mammakarzinomgewebe,
Getestete Reaktivität: Human	
Hinweis-IHC: Antigenmaskierung mit TE-Puffer pH 9,0 empfohlen. (*) Wahlweise kann die Antigenmaskierung auch mit Citratpuffer pH 6,0 erfolgen.	

Hintergrundinformationen

NOB1 was first identified in yeast as an essential gene encoding the Nin one binding protein, which is involved in pre-rRNA processing. In a late cytoplasmic processing step, Nob1 cleaves a 20S rRNA intermediate at cleavage site D to produce the mature 18S rRNA. In addition, NOB1 is a crucial molecule in the maturation of the 20S proteasome and protein degradation. It serves as a chaperone to join the 20S proteasome with the 19S regulatory particle in the nucleus and facilitates the maturation of the 20S proteasome. Recently NOB1 has been reported to be overexpressed in several types of cancer, suggesting its involvement in the tumorigenesis.

Lagerung

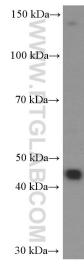
Lagerungsbedingungen:
Bei -20°C lagern. Nach dem Versand ein Jahr lang stabil
Lagerungspuffer:
PBS mit 0.02% Natriumazid und 50% Glycerin pH 7.3.
Aliquotieren ist nicht notwendig bei -20°C Lagerung

*** 20ul-Größen enthalten 0.1% BSA

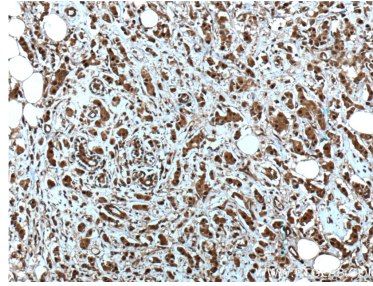
For technical support and original validation data for this product please contact:
T: 1 (888) 4PTGLAB (1-888-478-4522) (toll free in USA), or 1(312) 455-8498 (outside USA)
E: proteintech@ptglab.com
W: ptglab.com

This product is exclusively available under Proteintech Group brand and is not available to purchase from any other manufacturer.

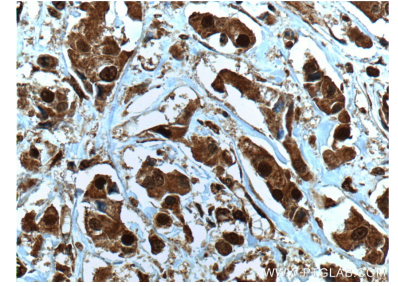
Ausgewählte Validierungsdaten



Jurkat cells were subjected to SDS PAGE followed by western blot with 66048-1-Ig (NOB1 Antibody) at dilution of 1:3000 incubated at room temperature for 1.5 hours.



Immunohistochemical analysis of paraffin-embedded human breast cancer tissue slide using 66048-1-Ig (NOB1 Antibody) at dilution of 1:200 (under 10x lens). Heat mediated antigen retrieval with Tris-EDTA buffer (pH 9.0).



Immunohistochemical analysis of paraffin-embedded human breast cancer tissue slide using 66048-1-Ig (NOB1 Antibody) at dilution of 1:200 (under 40x lens). Heat mediated antigen retrieval with Tris-EDTA buffer (pH 9.0).