

## Allgemeine Informationen

|  |  |   |
|--|--|---|
| <b>Katalog-Nr.:</b><br>66053-1-Ig  | <b>GenBank-Zugangsnummer:</b><br>BC001884  | <b>Reinigungsmethode:</b><br>Protein-A-Reinigung                      |
| <b>Größe:</b><br>150ul , Konzentration: 2400 µg/ml von4725<br>Nanodrop und 1053 µg/ml durch die<br>Bradford-Methode mit BSA als<br>Standard; | <b>GeneID (NCBI):</b><br>4725  | <b>CloneNo.:</b><br>2C2A5   |
| <b>Wirt:</b><br>Maus   | <b>Vollständiger Name:</b><br>NADH dehydrogenase (ubiquinone)<br>Fe-S protein 5, 15kDa (NADH-<br>coenzyme Q reductase) | <b>Empfohlene Verdünnungen:</b><br>WB 1:1000-1:4000<br>IHC 1:20-1:200 |
| <b>Isotyp:</b><br>IgG2b  | <b>Berechnete Masse:</b><br>13 kDa   |   |
| <b>Immunogen Katalognummer:</b><br>AG7663  | <b>Beobachtete Masse:</b><br>15 kDa  |   |

## Anwendungen

### Geprüfte Anwendungen:

IHC, WB, ELISA

### Getestete Reaktivität:

Human

**Hinweis-IHC: Antigenmaskierung mit TE-Puffer pH 9,0 empfohlen. (\*) Wahlweise kann die Antigenmaskierung auch mit Citratpuffer pH 6,0 erfolgen.**

### Positivkontrollen:

**WB :** HepG2-Zellen, fetales humanes Hirngewebe, HEK-293-Zellen, L02-Zellen

**IHC :** humanes Nierengewebe, humanes Lebergewebe

## Hintergrundinformationen

NDUFS5 gene is a member of the NADH dehydrogenase (ubiquinone) iron-sulfur protein family. The encoded protein is a subunit of the NADH:ubiquinone oxidoreductase (complex I), the first enzyme complex in the electron transport chain located in the inner mitochondrial membrane. The NDUFS5 mRNA is expressed ubiquitously in human tissues, with a relative higher expression in human heart, skeletal muscle, liver, kidney and fetal heart (PMID: 10070614). The NDUFS5 (15 kDa) subunit located at mitochondrion and contains two C-X9-C motifs that are predicted to form a helix-coil-helix structure, permitting the formation of intramolecular disulfide bonds (PMID: 21310150). Proteintech's NDUFS5 antibody 66053-1-Ig is capable of detecting the 15 kDa protein in Western blotting.

## Lagerung

### Lagerungsbedingungen:

Bei -20°C lagern. Nach dem Versand ein Jahr lang stabil

### Lagerungspuffer:

PBS mit 0.02% Natriumazid und 50% Glycerin pH 7.3.

Aliquotieren ist nicht notwendig bei -20°C Lagerung

**\*\*\* 20ul-Größen enthalten 0.1% BSA**

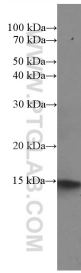
For technical support and original validation data for this product please contact:

T: 1 (888) 4PTGLAB (1-888-478-4522) (toll free  
in USA), or 1(312) 455-8498 (outside USA)

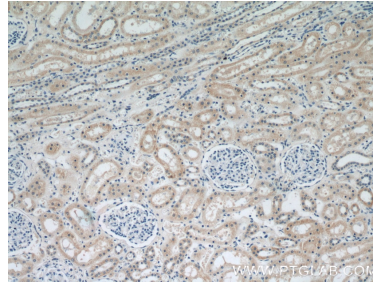
E: [proteintech@ptglab.com](mailto:proteintech@ptglab.com)  
W: [ptglab.com](http://ptglab.com)

**This product is exclusively available under Proteintech Group brand and is not available to purchase from any other manufacturer.**

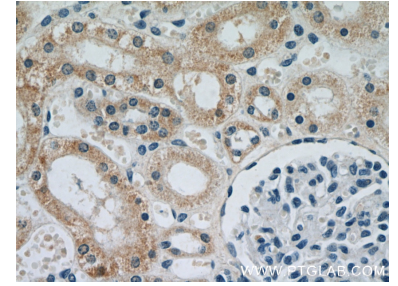
## Ausgewählte Validierungsdaten



HepG2 cells were subjected to SDS PAGE followed by western blot with 66053-1-Ig (NDUFS5 antibody) at dilution of 1:2000 incubated at room temperature for 1.5 hours.



Immunohistochemical analysis of paraffin-embedded human kidney using 66053-1-Ig(NDUFS5 antibody) at dilution of 1:50 (under 10x lens).



Immunohistochemical analysis of paraffin-embedded human kidney using 66053-1-Ig(NDUFS5 antibody) at dilution of 1:50 (under 40x lens).