

## Allgemeine Informationen

<b>Katalog-Nr.:</b> 66054-1-Ig	<b>GenBank-Zugangsnummer:</b> BC009200	<b>Reinigungsmethode:</b> Protein-G-Reinigung
<b>Größe:</b> 150ul , Konzentration: 1700 µg/ml von397 Nanodrop und 1007 µg/ml durch die Bradford-Methode mit BSA als Standard;	<b>GeneID (NCBI):</b> Vollständiger Name: Rho GDP dissociation inhibitor (GDI) beta	<b>CloneNo.:</b> 3E7B7
<b>Wirt:</b> Maus	<b>Berechnete Masse:</b> 201 aa, 23 kDa	<b>Empfohlene Verdünnungen:</b> WB 1:10000-1:50000 IHC 1:5000-1:10000 IF 1:200-1:800
<b>Isotyp:</b> IgG2b	<b>Beobachtete Masse:</b> 27 kDa	
<b>Immunogen Katalognummer:</b> AG9091		

## Anwendungen

<b>Geprüfte Anwendungen:</b> IF, IHC, WB, ELISA	<b>Positivkontrollen:</b>
<b>Getestete Reaktivität:</b> Human, Maus, Ratte	<b>WB :</b> THP-1-Zellen, HL-60-Zellen, Jurkat-Zellen, Raji-Zellen, U-937-Zellen
<b>Hinweis-IHC: Antigenmaskierung mit TE-Puffer pH 9,0 empfohlen. (*) Wahlweise kann die Antigenmaskierung auch mit Citratpuffer pH 6,0 erfolgen.</b>	<b>IHC :</b> humanes Tonsillitisgewebe, humanes Cerebellum-Gewebe
	<b>IF :</b> humanes Tonsillitisgewebe,

## Hintergrundinformationen

ARHGDIB, also known as RhoGDI2, is a conserved member of the RhoGDI family and plays an important role in cell migrations. It regulates the GDP/GTP exchange reaction of the Rho proteins by inhibiting the dissociation of GDP from them, and the subsequent binding of GTP to them. It is mainly in hematopoietic, endothelial, and epithelial cells. It has been linked to tumorigenesis and metastasis. RhoGDI2 expression is downregulated in several cancer types, such as bladder, lung and lymphoma, but is upregulated in prostate and gastric cancer.

## Lagerung

**Lagerungsbedingungen:**  
Bei -20°C lagern. Nach dem Versand ein Jahr lang stabil  
**Lagerungspuffer:**  
PBS mit 0.02% Natriumazid und 50% Glycerin pH 7.3.  
**Aliquotieren ist nicht notwendig bei -20°C Lagerung**

**\*\*\* 20ul-Größen enthalten 0.1% BSA**

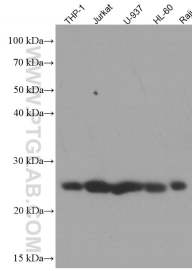
For technical support and original validation data for this product please contact:

T: 1 (888) 4PTGLAB (1-888-478-4522) (toll free  
in USA), or 1(312) 455-8498 (outside USA)

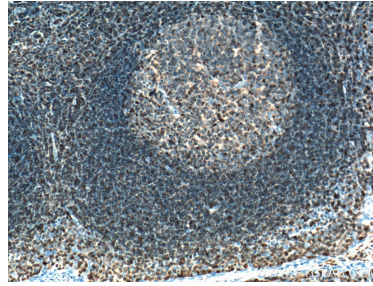
E: [proteintech@ptglab.com](mailto:proteintech@ptglab.com)  
W: [ptglab.com](http://ptglab.com)

**This product is exclusively available under Proteintech Group brand and is not available to purchase from any other manufacturer.**

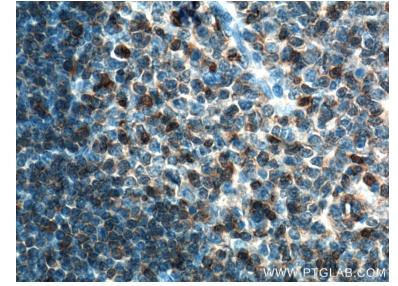
## Ausgewählte Validierungsdaten



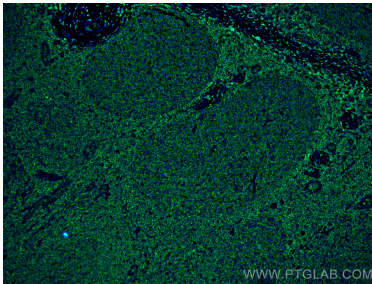
Various lysates (25µg/lane) were subjected to SDS PAGE followed by western blot with 66054-1-Ig (ARHGDI B antibody) at dilution of 1:200000 incubated at room temperature for 1.5 hours.



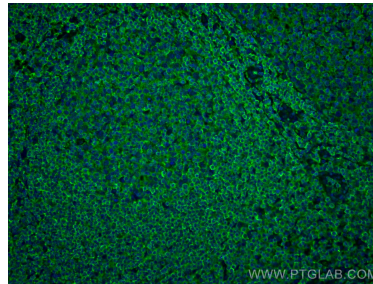
Immunohistochemical analysis of paraffin-embedded human tonsillitis tissue slide using 66054-1-Ig (ARHGDI B antibody) at dilution of 1:10000 (under 10x lens. Heat mediated antigen retrieval with Tris-EDTA buffer (pH 9.0).



Immunohistochemical analysis of paraffin-embedded human tonsillitis tissue slide using 66054-1-Ig (ARHGDI B antibody) at dilution of 1:10000 (under 40x lens. Heat mediated antigen retrieval with Tris-EDTA buffer (pH 9.0).



Immunofluorescent analysis of (4% PFA) fixed human tonsillitis tissue using ARHGDI B antibody (66054-1-Ig, Clone: 3E7B7) at dilution of 1:400 and CoraLite®488-Conjugated AffiniPure Goat Anti-Mouse IgG(H+L).



Immunofluorescent analysis of (4% PFA) fixed human tonsillitis tissue using ARHGDI B antibody (66054-1-Ig, Clone: 3E7B7) at dilution of 1:400 and CoraLite®488-Conjugated AffiniPure Goat Anti-Mouse IgG(H+L).