

Nur für Forschungszwecke

RBAP48 Monoklonaler Antikörper

Katalog-Nr.: 66060-1-Ig

Vorgestelltes Produkt



Allgemeine Informationen

Katalog-Nr.:

66060-1-Ig

Größe:

150ul, Konzentration: 1233 µg/ml durch die Bradford-Methode mit BSA als Standard;

Wirt:

Maus

Isotyp:

IgG2b

Immunogen Katalognummer:

AG6196

GenBank-Zugangsnummer:

BC053904

GeneID (NCBI):

5928

Vollständiger Name:

retinoblastoma binding protein 4

Berechnete Masse:

48 kDa

Beobachtete Masse:

53 kDa

Reinigungsmethode:

Protein-A-Reinigung

CloneNo.:

5C4D6

Empfohlene Verdünnungen:

WB 1:2000-1:12000

IHC 1:20-1:200

IF 1:50-1:500

Anwendungen

Geprüfte Anwendungen:

FC, IF, IHC, WB, ELISA

Getestete Reaktivität:

Human, Maus, Ratte

Hinweis-IHC: Antigendemaskierung mit TE-Puffer pH 9,0 empfohlen. (*) Wahlweise kann die Antigendemaskierung auch mit Citratpuffer pH 6,0 erfolgen.

Positivkontrollen:

WB : HEK-293-Zellen, HeLa-Zellen, L02-Zellen, NIH/3T3-Zellen, RAW 264.7-Zellen, ROS1728-Zellen

IHC : humanes Zervixkarzinomgewebe, humanes Hodengewebe

IF : HepG2-Zellen,

Hintergrundinformationen

Histone-binding protein RBBP4 (also known as RbAp48, or NURF55) is a protein that in humans is encoded by the RBBP4 gene. This gene encodes a ubiquitously expressed nuclear protein that belongs to a highly conserved subfamily of WD-repeat proteins. It is present in protein complexes involved in histone acetylation and chromatin assembly. It is part of the Mi-2/NuRD complex complex that has been implicated in chromatin remodeling and transcriptional repression associated with histone deacetylation. This encoded protein is also part of corepressor complexes, which is an integral component of transcriptional silencing. It is found among several cellular proteins that bind directly to retinoblastoma protein to regulate cell proliferation. A decrease of RbAp48 in the dentate gyrus (DG) of the hippocampus in the brain is suspected to be a main cause of memory loss in normal aging (PMID: 23986399).

Lagerung

Lagerungsbedingungen:

Bei -20°C lagern. Nach dem Versand ein Jahr lang stabil

Lagerungspuffer:

PBS mit 0.02% Natriumazid und 50% Glycerin pH 7.3.

Aliquotieren ist nicht notwendig bei -20°C Lagerung

*** 20ul-Größen enthalten 0.1% BSA

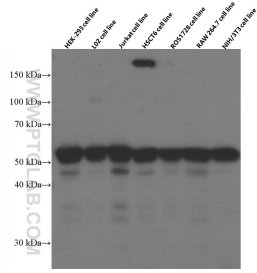
For technical support and original validation data for this product please contact:

T: 1 (888) 4PTGLAB (1-888-478-4522) (toll free in USA), or 1(312) 455-8498 (outside USA)

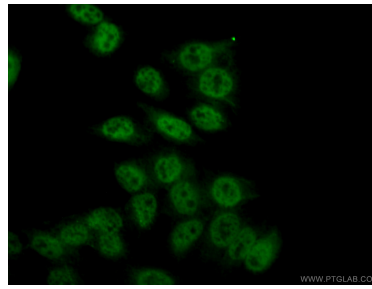
E: proteintech@ptglab.com
W: ptglab.com

This product is exclusively available under Proteintech Group brand and is not available to purchase from any other manufacturer.

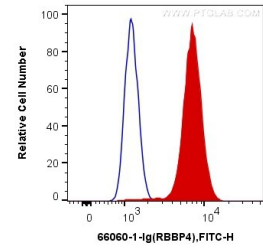
Ausgewählte Validierungsdaten



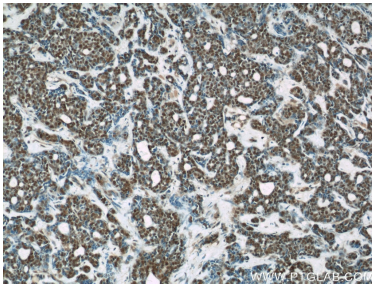
Various lysates were subjected to SDS PAGE followed by western blot with 66060-1-Ig (RBAP48 antibody) at dilution of 1:6000 incubated at room temperature for 1.5 hours.



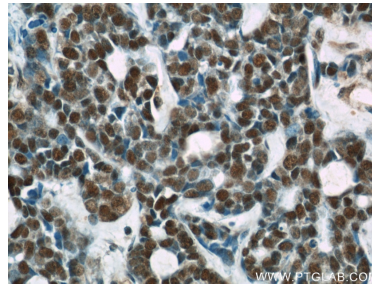
Immunofluorescent analysis of (4% PFA) fixed HepG2 cells using 66060-1-Ig (RBAP48 antibody) at dilution of 1:100 and CoraLite488-Conjugated AffiniPure Goat Anti-Mouse IgG(H+L).



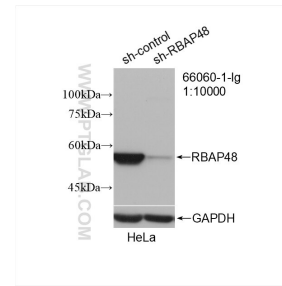
1X10⁶ HepG2 cells were intracellularly stained with 0.2 ug Anti-Human RBAP48 (66060-1-Ig, Clone:5C4D6) and CoraLite®488-Conjugated AffiniPure Goat Anti-Mouse IgG(H+L) at dilution 1:1000 (red), or 0.2 ug Mouse IgG2b Isotype Control (66360-3-Ig, Clone: K11B8C4B5) (blue). Cells were fixed and permeabilized with Transcription Factor Staining Buffer Kit (PF00011).



Immunohistochemical analysis of paraffin-embedded human cervical cancer using 66060-1-Ig(RBAP48 antibody) at dilution of 1:200 (under 10x lens).



Immunohistochemical analysis of paraffin-embedded human cervical cancer using 66060-1-Ig(RBAP48 antibody) at dilution of 1:200 (under 40x lens).



WB result of RBAP48 antibody (66060-1-Ig; 1:10000; incubated at room temperature for 1.5 hours) with sh-Control and sh-RBAP48 transfected HeLa cells.