

Nur für Forschungszwecke

Integrin Alpha 3 Monoklonaler Antikörper



Katalog-Nr.: 66070-1-Ig

Vorgestelltes Produkt

11 Publikationen

Allgemeine Informationen

Katalog-Nr.:
66070-1-Ig

Größe:

150ul, Konzentration: 1600 µg/ml von 3675

Nanodrop und 893 µg/ml durch die Bradford-Methode mit BSA als Standard;

Wirt:

Maus

Isotyp:

IgG2a

Immunogen Katalognummer:

AG17293

GenBank-Zugangsnummer:

BC150190

GeneID (NCBI):

3675

Vollständiger Name:

integrin, alpha 3 (antigen CD49C, alpha 3 subunit of VLA-3 receptor)

Berechnete Masse:

1066 aa, 119 kDa

Beobachtete Masse:

120 kDa

Reinigungsmethode:

Protein-A-Reinigung

CloneNo.:

3F9G4

Empfohlene Verdünnungen:

WB 1:500-1:2000

IHC 1:2000-1:8000

Anwendungen

Geprüfte Anwendungen:

FC, IHC, WB, ELISA

In Publikationen genannte Anwendungen:

FC, IF, IHC, WB

Getestete Reaktivität:

Hausschwein, Human, Maus

Zitierte Arten:

Human, Kaninchen, Maus

Hinweis-IHC: Antigendemaskierung mit TE-Puffer pH 9,0 empfohlen. (*) Wahlweise kann die Antigendemaskierung auch mit Citratpuffer pH 6,0 erfolgen.

Positivkontrollen:

WB: PC-3-Zellen, A431-Zellen, A549-Zellen, HepG2-Zellen, Maushirngewebe

IHC: humanes Lungenkarzinomgewebe,

Hintergrundinformationen

ITGA3, also named as MSK18, CD49c, GAPB3 and FRP-2, belongs to the integrin alpha chain family. It is a receptor for fibronectin, laminin, collagen, epiligrin, thrombospondin and CSPG4. ITGA3 may mediate with LGALS3 the stimulation by CSPG4 of endothelial cells migration. ITGA3 is highly concentrated in epithelial cells where it strongly adheres to Laminin-5 and Laminin-5 induced rapid adhesion can be blocked by antibodies against the alpha-3 integrin subunit. It can be cleaved into heavy chain(840aa) and light chain(176aa). This antibody can recognize the heavy chain.

Bemerkenswerte Veröffentlichungen

Verfasser	Pubmed ID	Journal	Anwendung
Céline Cegarra	36108060	PLoS One	
Kai Guo	34514877	Thyroid	IHC
Siyang Zeng	36281226	iScience	WB

Lagerung

Lagerungsbedingungen:

Bei -20°C lagern. Nach dem Versand ein Jahr lang stabil

Lagerungspuffer:

PBS mit 0.02% Natriumazid und 50% Glycerin pH 7.3.

Aliquotieren ist nicht notwendig bei -20°C Lagerung

*** 20ul-Größen enthalten 0.1% BSA

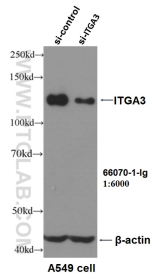
For technical support and original validation data for this product please contact:

T: 1 (888) 4PTGLAB (1-888-478-4522) (toll free in USA), or 1(312) 455-8498 (outside USA)

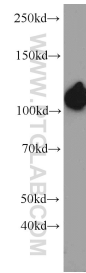
E: proteintech@ptglab.com
W: ptglab.com

This product is exclusively available under Proteintech Group brand and is not available to purchase from any other manufacturer.

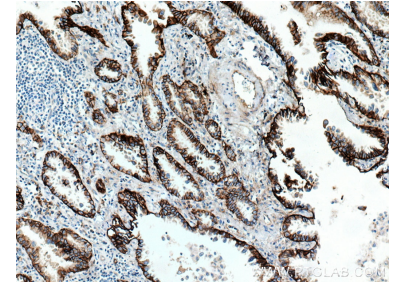
Ausgewählte Validierungsdaten



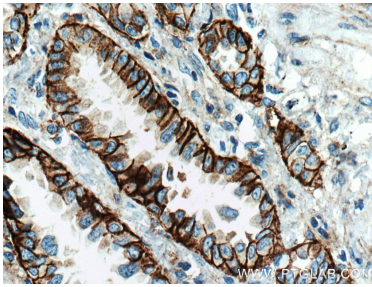
WB result of ITGA3 antibody (66070-1-Ig, 1:6000) with si-control and si-ITGA3 transfected A549 cells.



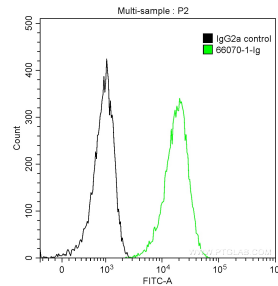
PC-3 cells were subjected to SDS PAGE followed by western blot with 66070-1-Ig (ITGA3 antibody) at dilution of 1:1000 incubated at room temperature for 1.5 hours.



Immunohistochemical analysis of paraffin-embedded human lung cancer tissue slide using 66070-1-Ig (Integrin alpha-3 antibody) at dilution of 1:4000 (under 10x lens. Heat mediated antigen retrieval with Tris-EDTA buffer (pH 9.0).



Immunohistochemical analysis of paraffin-embedded human lung cancer tissue slide using 66070-1-Ig (Integrin alpha-3 antibody) at dilution of 1:4000 (under 40x lens. Heat mediated antigen retrieval with Tris-EDTA buffer (pH 9.0).



1X10⁶ PC-3 cells were stained with 0.2 ug Anti-Human Integrin Alpha 3 (66070-1-Ig, Clone: 3F9G4) and CoraLite®488-Conjugated AffiniPure Goat Anti-Mouse IgG(H+L) at dilution 1:1000 (green), or stained with 0.2 ug Mouse IgG2a Isotype Control and CoraLite®488-Conjugated AffiniPure Goat Anti-Mouse IgG(H+L) at dilution 1:1000 (black). Cells were fixed with 90% MeOH.