

Nur für Forschungszwecke

# EPLIN Monoklonaler Antikörper

Katalog-Nr.: 66071-1-Ig

Vorgestelltes Produkt



## Allgemeine Informationen

<b>Katalog-Nr.:</b> 66071-1-Ig	<b>GenBank-Zugangsnummer:</b> BC001247	<b>Reinigungsmethode:</b> Protein-A-Reinigung
<b>Größe:</b> 150ul, Konzentration: 553 µg/ml durch die Bradford-Methode mit BSA als Standard;	<b>GeneID (NCBI):</b> 51474	<b>CloneNo.:</b> 6E6E6
<b>Wirt:</b> Maus	<b>Vollständiger Name:</b> LIM domain and actin binding 1	<b>Empfohlene Verdünnungen:</b> WB 1:2000-1:10000 IHC 1:20-1:200 IF 1:20-1:200
<b>Isotyp:</b> IgG1	<b>Berechnete Masse:</b> 85 kDa	
<b>Immunogen Katalognummer:</b> AG13288	<b>Beobachtete Masse:</b> 90 kDa, 110 kDa	

## Anwendungen

<b>Geprüfte Anwendungen:</b> IF, IHC, WB, ELISA	<b>Positivkontrollen:</b>
<b>Getestete Reaktivität:</b> Human, Ratte	<b>WB:</b> HeLa-Zellen, COLO 320-Zellen, HEK-293-Zellen, HT-29-Zellen, humanes Hirngewebe, ROS1728-Zellen
<b>Hinweis-IHC: Antigendemaskierung mit TE-Puffer pH 9,0 empfohlen. (*) Wahlweise kann die Antigendemaskierung auch mit Citratpuffer pH 6,0 erfolgen.</b>	<b>IHC:</b> humanes Herzgewebe, <b>IF:</b> HeLa-Zellen,

## Hintergrundinformationen

EPLIN is a cytoskeletal protein that is preferentially expressed in epithelial cells and is implicated in regulation of cytoskeletal dynamics and cytokinesis. In human, there are two known isoforms, EPLIN-a and -b, generated by alternative promoter usage from a single gene. EPLIN-a expression is often down-regulated in cancerous cells and tissues. This antibody recognizes both of isoforms of EPLIN.

## Lagerung

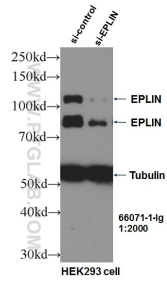
**Lagerungsbedingungen:**  
Bei -20°C lagern. Nach dem Versand ein Jahr lang stabil  
**Lagerungspuffer:**  
PBS mit 0.02% Natriumazid und 50% Glycerin pH 7.3.  
Aliquotieren ist nicht notwendig bei -20°C Lagerung

\*\*\* 20ul-Größen enthalten 0.1% BSA

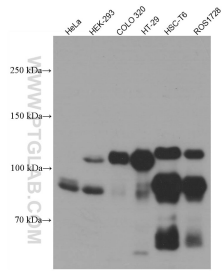
For technical support and original validation data for this product please contact:  
T: 1 (888) 4PTGLAB (1-888-478-4522) (toll free in USA), or 1(312) 455-8498 (outside USA)  
E: proteintech@ptglab.com  
W: ptglab.com

This product is exclusively available under Proteintech Group brand and is not available to purchase from any other manufacturer.

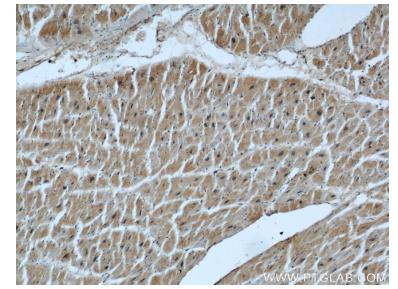
## Ausgewählte Validierungsdaten



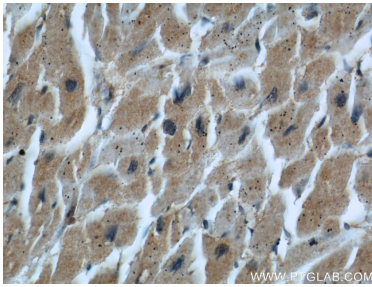
WB result of EPLIN antibody (66071-1-Ig, 1:2000) with si-Control and si-EPLIN transfected HEK293 cells.



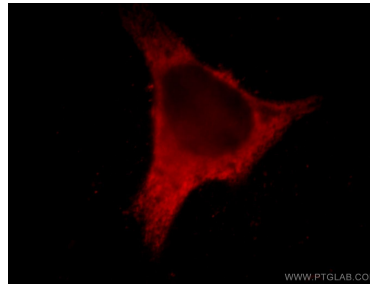
Various lysates were subjected to SDS PAGE followed by western blot with 66071-1-Ig (EPLIN antibody) at dilution of 1:5000 incubated at room temperature for 1.5 hours.



Immunohistochemical analysis of paraffin-embedded human heart using 66071-1-Ig (EPLIN antibody) at dilution of 1:50 (under 10x lens).



Immunohistochemical analysis of paraffin-embedded human heart using 66071-1-Ig (EPLIN antibody) at dilution of 1:50 (under 40x lens).



Immunofluorescent analysis of HeLa cells using 66071-1-Ig (EPLIN antibody) at dilution of 1:50 and Rhodamine-Goat anti-Mouse IgG.