

Allgemeine Informationen

Katalog-Nr.:
66077-1-Ig

Größe:
150ul, Konzentration: 3800 µg/ml von 9894
Nanodrop und 1680 µg/ml durch die
Bradford-Methode mit BSA als
Standard;

Wirt:
Maus

Isotyp:
IgG1

Immunogen Katalognummer:
AG8834

GenBank-Zugangsnummer:
BC017188

GeneID (NCBI):

Vollständiger Name:
TEL2, telomere maintenance 2,
homolog (S. cerevisiae)

Berechnete Masse:
837 aa, 92 kDa

Beobachtete Masse:
92 kDa

Reinigungsmethode:
Protein-G-Reinigung

CloneNo.:
3H10F4

Empfohlene Verdünnungen:
WB 1:1000-1:4000
IP 0.5-4.0 µg für IP und 1:500-1:1000
für WB
IHC 1:20-1:200
IF 1:10-1:100

Anwendungen

Geprüfte Anwendungen:

IF, IHC, IP, WB, ELISA

In Publikationen genannte Anwendungen:

WB

Getestete Reaktivität:

Human, Ratte

Zitierte Arten:

Human

Hinweis-IHC: Antigenmaskierung mit TE-Puffer pH 9,0 empfohlen. (*) Wahlweise kann die Antigenmaskierung auch mit Citratpuffer pH 6,0 erfolgen.

Positivkontrollen:

WB: Y79-Zellen, A431-Zellen, HEK-293-Zellen, HeLa-Zellen, Jurkat-Zellen, L02-Zellen, MCF-7-Zellen

IP: HepG2-Zellen,

IHC: humanes Nierengewebe, humanes Leberkarzinomgewebe

IF: HepG2-Zellen,

Hintergrundinformationen

TELO2 gene encodes a telomere length regulation protein TEL2 homolog. TELO2 may be involved in telomere length regulation and can form TTT complex with TTI1 and TTI2. TTT complex is required to stabilize protein levels of PIKK family proteins and is involved in the cellular resistance to DNA damage stresses, like ionizing radiation (IR), and ultraviolet (UV). The activity of mTORC1 and mTORC2 complexes, which regulate cell growth and survival in response to nutrient and hormonal signals, can be promoted, stabilized and maintained by TELO2.

Bemerkenswerte Veröffentlichungen

Verfasser	Pubmed ID	Journal	Anwendung
Feng Rao	24657168	Mol Cell	WB

Lagerung

Lagerungsbedingungen:

Bei -20°C lagern. Nach dem Versand ein Jahr lang stabil

Lagerungspuffer:

PBS mit 0.02% Natriumazid und 50% Glycerin pH 7.3.

Aliquotieren ist nicht notwendig bei -20°C Lagerung

***** 20ul-Größen enthalten 0.1% BSA**

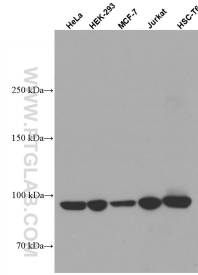
For technical support and original validation data for this product please contact:

T: 1 (888) 4PTGLAB (1-888-478-4522) (toll free in USA), or 1(312) 455-8498 (outside USA)

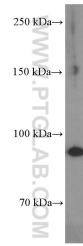
E: proteintech@ptglab.com
W: ptglab.com

This product is exclusively available under Proteintech Group brand and is not available to purchase from any other manufacturer.

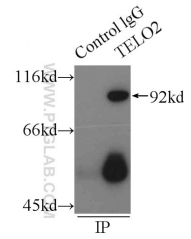
Ausgewählte Validierungsdaten



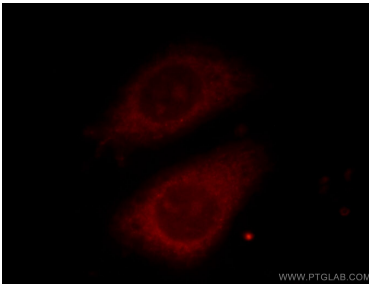
Various lysates were subjected to SDS PAGE followed by western blot with 66077-1-Ig (TELO2 antibody) at dilution of 1:5000 incubated at room temperature for 1.5 hours.



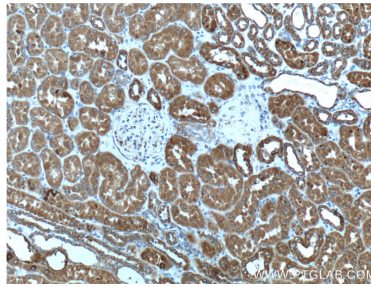
Y79 cells were subjected to SDS PAGE followed by western blot with 66077-1-Ig (TELO2 Antibody) at dilution of 1:2000 incubated at room temperature for 1.5 hours.



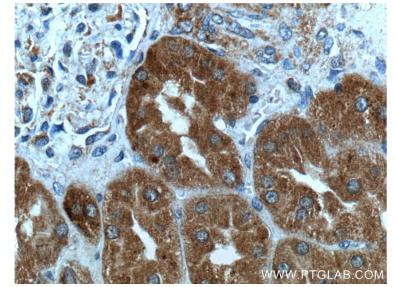
IP Result of anti-TELO2 (IP:66077-1-Ig, 4ug; Detection:66077-1-Ig 1:500) with HepG2 cells lysate 2900ug.



Immunofluorescent analysis of fixed HepG2 cells using 66077-1-Ig (TELO2 antibody) at dilution of 1:25.



Immunohistochemical analysis of paraffin-embedded human kidney tissue slide using 66077-1-Ig (TELO2 Antibody) at dilution of 1:200 (under 10x lens).



Immunohistochemical analysis of paraffin-embedded human kidney tissue slide using 66077-1-Ig (TELO2 Antibody) at dilution of 1:200 (under 40x lens).