

Nur für Forschungszwecke

# CISD2-Specific Monoklonaler Antikörper



Katalog-Nr.:66082-1-Ig

Vorgestelltes Produkt

## Allgemeine Informationen

### Katalog-Nr.:

66082-1-Ig

### Größe:

150ul, Konzentration: 1653 µg/ml durch die Bradford-Methode mit BSA als Standard;

### Wirt:

Maus

### Isotyp:

IgG2b

### GenBank-Zugangsnummer:

NM\_001008388

### GeneID (NCBI):

493856

### Vollständiger Name:

CDGSH iron sulfur domain 2

### Beobachtete Masse:

15 kDa

### Reinigungsmethode:

Protein-A-Reinigung

### CloneNo.:

3D7A3

### Empfohlene Verdünnungen:

WB 1:2000-1:16000

IHC 1:20-1:200

IF 1:50-1:500

## Anwendungen

### Geprüfte Anwendungen:

IF, IHC, WB, ELISA

### Getestete Reaktivität:

Human, Maus, Ratte, Zebrafisch

**Hinweis-IHC: Antigendemaskierung mit TE-Puffer pH 9,0 empfohlen. (\*) Wahlweise kann die Antigendemaskierung auch mit Citratpuffer pH 6,0 erfolgen.**

### Positivkontrollen:

**WB**: fetales humanes Hirngewebe, HeLa-Zellen, MCF-7-Zellen, RAW 264.7-Zellen, ROS1728-Zellen, Zebrafischgewebe

**IHC**: humanes Nierengewebe, humanes Hodengewebe

**IF**: MCF-7-Zellen,

## Hintergrundinformationen

CISD2 gene encodes a 15 kDa CDGSH iron-sulfur domain-containing protein 2, which is also named Miner1 or NAF-1, this protein was reported on endoplasmic reticulum membrane or mitochondrion outer membrane. Defects in CISD2 are the cause of Wolfram syndrome type 2 (WFS2), a rare disorder characterized by juvenile-onset insulin-dependent diabetes mellitus with optic atrophy. CISD2 regulates autophagy program by interacting BCL2, contributing to antagonize BECN1-mediated cellular autophagy at the endoplasmic reticulum. This monoclonal antibody is specific to CISD2 and does not cross-react with CISD1.

## Lagerung

### Lagerungsbedingungen:

Bei -20°C lagern. Nach dem Versand ein Jahr lang stabil

### Lagerungspuffer:

PBS mit 0.02% Natriumazid und 50% Glycerin pH 7.3.

Aliquotieren ist nicht notwendig bei -20°C Lagerung

\*\*\* 20ul-Größen enthalten 0.1% BSA

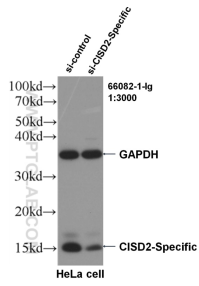
For technical support and original validation data for this product please contact:

T: 1 (888) 4PTGLAB (1-888-478-4522) (toll free in USA), or 1(312) 455-8498 (outside USA)

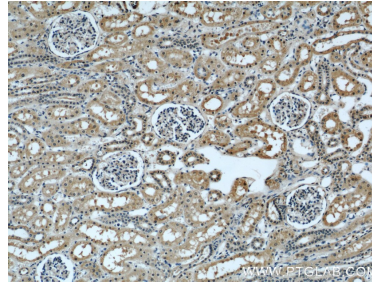
E: proteintech@ptglab.com  
W: ptglab.com

This product is exclusively available under Proteintech Group brand and is not available to purchase from any other manufacturer.

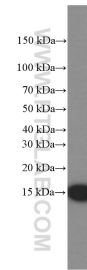
## Ausgewählte Validierungsdaten



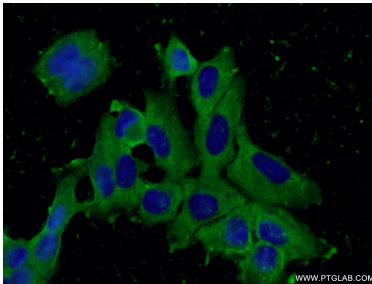
WB result of CISD2 antibody (66082-1-Ig, 1:3000) with si-Control and si-CISD2 transfected HeLa cells.



Immunohistochemical analysis of paraffin-embedded human kidney using 66082-1-Ig(CISD2-Specific antibody) at dilution of 1:50 (under 10x lens).



fetal human brain tissue were subjected to SDS PAGE followed by western blot with 66082-1-Ig(CISD2-Specific Antibody) at dilution of 1:8000 incubated at room temperature for 1.5 hours.



Immunofluorescent analysis of (-20°C Ethanol ) fixed MCF-7 cells using 66082-1-Ig(CISD2-Specific antibody) at dilution of 1:100 and Alexa Fluor 488-conjugated AffiniPure Goat Anti-Mouse IgG(H+L).