

Allgemeine Informationen

Katalog-Nr.:
66083-1-Ig

Größe:
150ul , Konzentration: 675 µg/ml von
Nanodrop und 613 µg/ml durch die
Bradford-Methode mit BSA als
Standard;

Wirt:
Maus

Isotyp:
IgG1

Immunogen Katalognummer:
AG17906

GenBank-Zugangsnummer:
BC015729

GeneID (NCBI):
7090

Vollständiger Name:
transducin-like enhancer of split 3
(E(sp1) homolog, Drosophila)

Berechnete Masse:
772 aa, 83 kDa

Beobachtete Masse:
90 kDa

Reinigungsmethode:
Protein-G-Reinigung

CloneNo.:
1D11A8

Empfohlene Verdünnungen:
WB 1:500-1:2000
IP 0.5-4.0 µg für IP und 1:500-1:1000
für WB
IHC 1:20-1:200

Anwendungen

Geprüfte Anwendungen:

IHC, IP, WB, ELISA

Getestete Reaktivität:

Human

**Hinweis-IHC: Antigendemaskierung mit TE-
Puffer pH 9,0 empfohlen. (*) Wahlweise
kann die Antigendemaskierung auch mit
Citratpuffer pH 6,0 erfolgen.**

Positivkontrollen:

WB : 293 cells, HEK-

IP : HEK-293-Zellen,

IHC : humanes Mammakarzinomgewebe,

Hintergrundinformationen

TLE3, also named as KIAA1547 and ESG3, belongs to the WD repeat Groucho/TLE family. It is a transcriptional corepressor that binds to a number of transcription factors. It inhibits the transcriptional activation mediated by CTNNB1 and TCF family members in Wnt signaling. The effects of full-length TLE family members may be modulated by association with dominant-negative AES. TLE3 is a member of the transducin-like enhancer of split (TLE) family of proteins that have been implicated in the tumorigenesis and classification of sarcomas. It is a candidate biomarker of response to taxane therapy. (PMID:19309506)

Lagerung

Lagerungsbedingungen:

Bei -20°C lagern. Nach dem Versand ein Jahr lang stabil

Lagerungspuffer:

PBS mit 0.02% Natriumazid und 50% Glycerin pH 7.3.

Aliquotieren ist nicht notwendig bei -20°C Lagerung

***** 20ul-Größen enthalten 0.1% BSA**

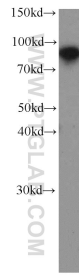
For technical support and original validation data for this product please contact:

T: 1 (888) 4PTGLAB (1-888-478-4522) (toll free
in USA), or 1(312) 455-8498 (outside USA)

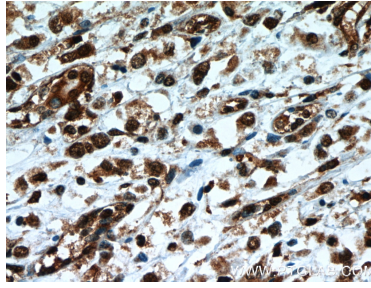
E: proteintech@ptglab.com
W: ptglab.com

**This product is exclusively available under Proteintech
Group brand and is not available to purchase from any
other manufacturer.**

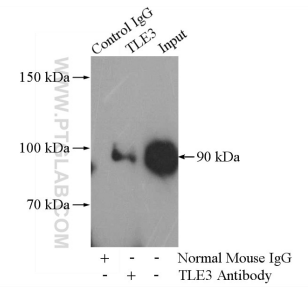
Ausgewählte Validierungsdaten



HEK-293 cells were subjected to SDS PAGE followed by western blot with 66083-1-Ig (TLE3 antibody) at dilution of 1:1000 incubated at room temperature for 1.5 hours.



Immunohistochemical analysis of paraffin-embedded human breast cancer slide using 66083-1-Ig (TLE3 Antibody) at dilution of 1:50.



IP Result of anti-TLE3 (IP:66083-1-Ig, 5ug; Detection:66083-1-Ig 1:500) with HEK-293 cells lysate 1480ug.