

Nur für Forschungszwecke

# Serum amyloid P component Monoklonaler Antikörper



Katalog-Nr.: 66084-1-Ig **1 Publikationen**

## Allgemeine Informationen

|                                                                                                                                       |                                                          |                                                                                        |
|---------------------------------------------------------------------------------------------------------------------------------------|----------------------------------------------------------|----------------------------------------------------------------------------------------|
| <b>Katalog-Nr.:</b><br>66084-1-Ig                                                                                                     | <b>GenBank-Zugangsnummer:</b><br>BC007058                | <b>Reinigungsmethode:</b><br>Protein-A-Reinigung                                       |
| <b>Größe:</b><br>150ul, Konzentration: 800 µg/ml von<br>Nanodrop und 420 µg/ml durch die<br>Bradford-Methode mit BSA als<br>Standard; | <b>GeneID (NCBI):</b><br>325                             | <b>CloneNo.:</b><br>1A1D10                                                             |
| <b>Wirt:</b><br>Maus                                                                                                                  | <b>Vollständiger Name:</b><br>amyloid P component, serum | <b>Empfohlene Verdünnungen:</b><br>WB 1:500-1:2000<br>IHC 1:50-1:500<br>IF 1:200-1:800 |
| <b>Isotyp:</b><br>IgG2b                                                                                                               | <b>Berechnete Masse:</b><br>223 aa, 25 kDa               |                                                                                        |
| <b>Immunogen Katalognummer:</b><br>AG14957                                                                                            | <b>Beobachtete Masse:</b><br>27 kDa                      |                                                                                        |

## Anwendungen

|                                                                                                                                                                        |                                                                |
|------------------------------------------------------------------------------------------------------------------------------------------------------------------------|----------------------------------------------------------------|
| <b>Geprüfte Anwendungen:</b><br>IF, IHC, WB, ELISA                                                                                                                     | <b>Positivkontrollen:</b>                                      |
| <b>In Publikationen genannte Anwendungen:</b><br>IHC                                                                                                                   | <b>WB:</b> humanes Nierengewebe, human plasma                  |
| <b>Getestete Reaktivität:</b><br>Human                                                                                                                                 | <b>IHC:</b> humanes Lebergewebe, humanes Nierengewebe          |
| <b>Zitierte Arten:</b><br>Human                                                                                                                                        | <b>IF:</b> humanes Leberkarzinomgewebe, humanes<br>Lebergewebe |
| <b>Hinweis-IHC: Antigendemaskierung mit TE-<br/>Puffer pH 9,0 empfohlen. (*) Wahlweise<br/>kann die Antigendemaskierung auch mit<br/>Citratpuffer pH 6,0 erfolgen.</b> |                                                                |

## Hintergrundinformationen

Serum amyloid P component (SAP), a member of pentraxin family, is a constitutive serum protein that is synthesized by hepatocytes. It is an acute phase protein, structurally related to C-reactive protein. SAP is a calcium-dependent ligand binding protein, which can interact with DNA and histones and may scavenge nuclear material released from damaged circulating cells.

## Bemerkenswerte Veröffentlichungen

| Verfasser    | Pubmed ID | Journal        | Anwendung |
|--------------|-----------|----------------|-----------|
| Weifeng Wang | 33333044  | Clin Chim Acta | IHC       |

## Lagerung

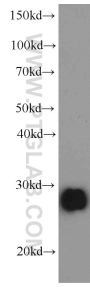
**Lagerungsbedingungen:**  
Bei -20°C lagern. Nach dem Versand ein Jahr lang stabil  
**Lagerungspuffer:**  
PBS mit 0.02% Natriumazid und 50% Glycerin pH 7.3.  
Aliquotieren ist nicht notwendig bei -20°C Lagerung

\*\*\* 20ul-Größen enthalten 0.1% BSA

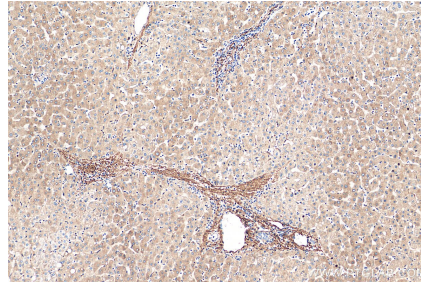
For technical support and original validation data for this product please contact:  
T: 1 (888) 4PTGLAB (1-888-478-4522) (toll free in USA), or 1(312) 455-8498 (outside USA)  
E: proteintech@ptglab.com  
W: ptglab.com

This product is exclusively available under Proteintech Group brand and is not available to purchase from any other manufacturer.

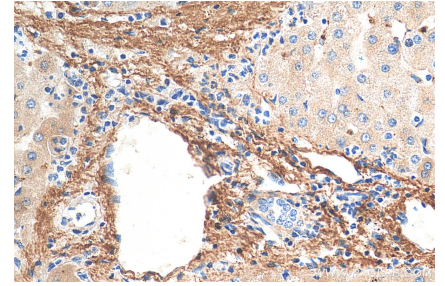
## Ausgewählte Validierungsdaten



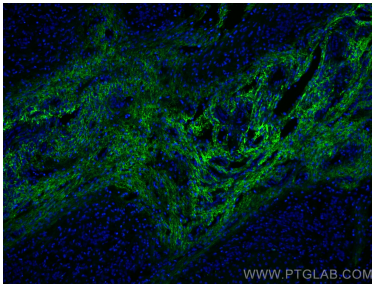
human kidney tissue were subjected to SDS PAGE followed by western blot with 66084-1-Ig (Serum amyloid P component antibody) at dilution of 1:1000 incubated at room temperature for 1.5 hours.



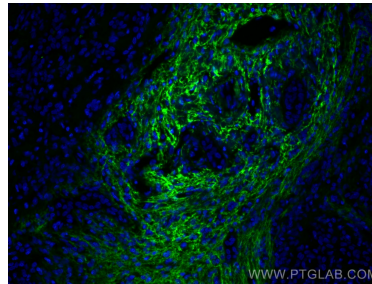
Immunohistochemical analysis of paraffin-embedded human liver tissue slide using 66084-1-Ig (Serum amyloid P component antibody) at dilution of 1:200 (under 10x lens). Heat mediated antigen retrieval with Tris-EDTA buffer (pH 9.0).



Immunohistochemical analysis of paraffin-embedded human liver tissue slide using 66084-1-Ig (Serum amyloid P component antibody) at dilution of 1:200 (under 40x lens). Heat mediated antigen retrieval with Tris-EDTA buffer (pH 9.0).



Immunofluorescent analysis of (4% PFA) fixed human liver cancer tissue using Serum amyloid P component antibody (66084-1-Ig, Clone: 1A1D10) at dilution of 1:400 and CoraLite®488-Conjugated AffiniPure Goat Anti-Mouse IgG(H+L).



Immunofluorescent analysis of (4% PFA) fixed human liver cancer tissue using Serum amyloid P component antibody (66084-1-Ig, Clone: 1A1D10) at dilution of 1:400 and CoraLite®488-Conjugated AffiniPure Goat Anti-Mouse IgG(H+L).