

Allgemeine Informationen

| | | |
|--|--|---|
| Katalog-Nr.: 66087-1-Ig | GenBank-Zugangsnummer: BC016292 | Reinigungsmethode: Protein-A-Reinigung |
| Größe: 150ul , Konzentration: 840 µg/ml durch die Bradford-Methode mit BSA als Standard; | GeneID (NCBI): 11065 | CloneNo.: 1C12H8 |
| Wirt: Maus | Vollständiger Name: ubiquitin-conjugating enzyme E2C | Empfohlene Verdünnungen: WB 1:1000-1:4000 IHC 1:200-1:800 IF 1:400-1:1600 |
| Isotyp: IgG1 | Berechnete Masse: 179 aa, 20 kDa | |
| Immunogen Katalognummer: AG19235 | Beobachtete Masse: 20 kDa | |

Anwendungen

| | |
|---|---|
| Geprüfte Anwendungen: IF, IHC, WB, ELISA | Positivkontrollen: |
| In Publikationen genannte Anwendungen: IF, IHC, WB | WB : HeLa-Zellen, A549-Zellen, HEK-293-Zellen, HepG2-Zellen, NIH/3T3-Zellen, U2OS-Zellen |
| Getestete Reaktivität: Human, Maus, Ratte | IHC : humanes Lungenkarzinomgewebe, humanes Kolonkarzinomgewebe |
| Zitierte Arten: Human | IF : HeLa-Zellen, |
| Hinweis-IHC: Antigenmaskierung mit TE-Puffer pH 9,0 empfohlen. (*) Wahlweise kann die Antigenmaskierung auch mit Citratpuffer pH 6,0 erfolgen. | |

Hintergrundinformationen

UBE2C (Ubiquitin-conjugating enzyme E2 C) is also known as UBCH10 and belongs to the ubiquitin-conjugating enzyme family. It is highly expressed in a variety of human primary tumors, and it is able to promote cell proliferation and malignant transformation (PMID:18703417). UBE2C, along with the E3 ligase of the anaphasepromoting complex (APC), catalyzes the ubiquitination of mitotic cyclins A and B, as well as securin. UBE2C is essential for cell cycle progression, and mutation of its active site cysteine confers a dominant-negative phenotype (PMID:17217624).

Bemerkenswerte Veröffentlichungen

| Verfasser | Pubmed ID | Journal | Anwendung |
|---------------|-----------|-------------|-----------|
| Xianxing Wang | 31715067 | FEBS J | WB, IHC |
| Yingjie Su | 36423684 | J Biol Chem | WB |
| Andrew L Hong | 30860482 | Elife | WB |

Lagerung

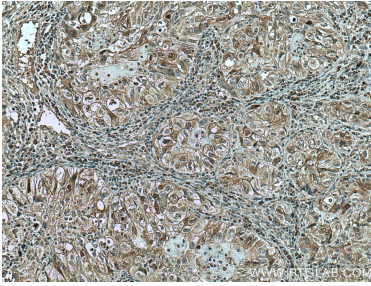
Lagerungsbedingungen:
Bei -20°C lagern. Nach dem Versand ein Jahr lang stabil
Lagerungspuffer:
PBS mit 0.02% Natriumazid und 50% Glycerin pH 7.3.
 Aliquotieren ist nicht notwendig bei -20°C Lagerung

*** 20ul-Größen enthalten 0.1% BSA

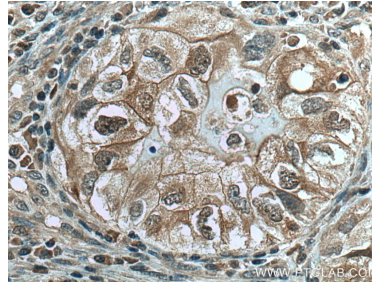
For technical support and original validation data for this product please contact:
 T: 1 (888) 4PTGLAB (1-888-478-4522) (toll free in USA), or 1(312) 455-8498 (outside USA)
 E: proteintech@ptglab.com
 W: ptglab.com

This product is exclusively available under Proteintech Group brand and is not available to purchase from any other manufacturer.

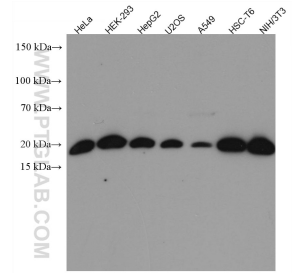
Ausgewählte Validierungsdaten



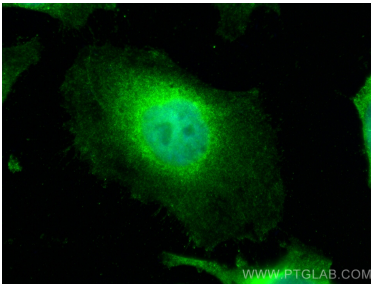
Immunohistochemical analysis of paraffin-embedded human lung cancer tissue slide using 66087-1-Ig (UBE2C antibody) at dilution of 1:400 (under 10x lens). Heat mediated antigen retrieval with Tris-EDTA buffer (pH 9.0).



Immunohistochemical analysis of paraffin-embedded human lung cancer tissue slide using 66087-1-Ig (UBE2C antibody) at dilution of 1:400 (under 40x lens). Heat mediated antigen retrieval with Tris-EDTA buffer (pH 9.0).



Various lysates were subjected to SDS PAGE followed by western blot with 66087-1-Ig (UBE2C antibody) at dilution of 1:2000 incubated at room temperature for 1.5 hours.



Immunofluorescent analysis of (4% PFA) fixed HeLa cells using UBE2C antibody (66087-1-Ig, Clone: 1C12H8) at dilution of 1:800 and CoraLite®488-Conjugated AffiniPure Goat Anti-Mouse IgG(H+L).