

Nur für Forschungszwecke

Factor XII Monoklonaler Antikörper



Katalog-Nr.:66089-1-Ig **1 Publikationen**

Allgemeine Informationen

Katalog-Nr.: 66089-1-Ig	GenBank-Zugangsnummer: BC012390	Reinigungsmethode: Protein-A-Reinigung
Größe: 150ul , Konzentration: 2600 µg/ml von2161 Nanodrop und 1280 µg/ml durch die Bradford-Methode mit BSA als Standard;	GeneID (NCBI): 2E2F11	CloneNo.: 2E2F11
Wirt: Maus	Vollständiger Name: coagulation factor XII (Hageman factor)	Empfohlene Verdünnungen: WB 1:500-1:2000 IHC 1:50-1:500 IF 1:50-1:500
Isotyp: IgG2b	Berechnete Masse: 615 aa, 68 kDa	
Immunogen Katalognummer: AG3401	Beobachtete Masse: 28 kDa	

Anwendungen

Geprüfte Anwendungen: IF, IHC, WB,ELISA	Positivkontrollen: WB : K562-Zellen, K-562-Zellen
In Publikationen genannte Anwendungen: WB	IHC : humanes Lebergewebe, humanes Nierengewebe
Getestete Reaktivität: Human, Maus	IF : HepG2-Zellen,
Zitierte Arten: Maus	
Hinweis-IHC: Antigenmaskierung mit TE-Puffer pH 9,0 empfohlen. (*) Wahlweise kann die Antigenmaskierung auch mit Citratpuffer pH 6,0 erfolgen.	

Hintergrundinformationen

Factor XII (F XII, Hageman factor) is a 80 kDa, single chain glycoprotein that circulates in blood as an inactive zymogen. F XII plays an important role in blood coagulation, fibrinolysis, and kinin generation. Factor XII is activated by kallikrein in alpha-factor XIIa, which is further converted by trypsin into beta-factor XIIa. Alpha-factor XIIa is composed of a 52 kDa NH₂-terminal heavy chain, called coagulation factor XIIa heavy chain, and a 28 kDa COOH-terminal light chain, called coagulation factor XIIa light chain, connected by a disulfide bond. Beta-factor XIIa is composed of 2 chains linked by a disulfide bond, an N-terminal nonapeptide, called beta-factor XIIa part 1, and coagulation factor XIIa light chain, also known in this context as beta-factor XIIa part 2.

Bemerkenswerte Veröffentlichungen

Verfasser	Pubmed ID	Journal	Anwendung
Fanfan Li	30959404	Mol Ther Nucleic Acids	WB

Lagerung

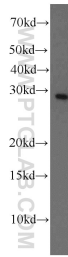
Lagerungsbedingungen:
Bei -20°C lagern. Nach dem Versand ein Jahr lang stabil
Lagerungspuffer:
PBS mit 0.02% Natriumazid und 50% Glycerin pH 7.3.
Aliquotieren ist nicht notwendig bei -20°C Lagerung

***** 20ul-Größen enthalten 0.1% BSA**

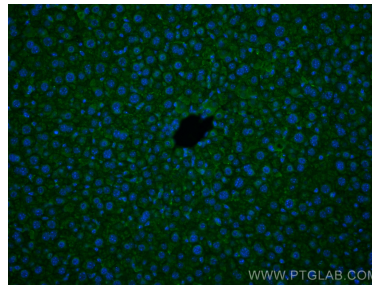
For technical support and original validation data for this product please contact:
T: 1 (888) 4PTGLAB (1-888-478-4522) (toll free in USA), or 1(312) 455-8498 (outside USA)
E: proteintech@ptglab.com
W: ptglab.com

This product is exclusively available under Proteintech Group brand and is not available to purchase from any other manufacturer.

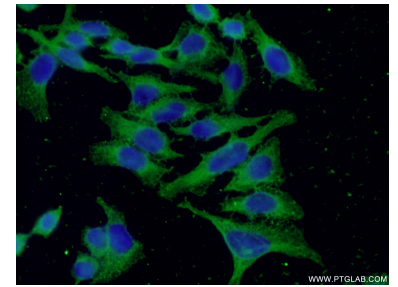
Ausgewählte Validierungsdaten



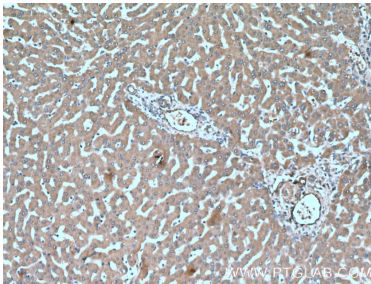
K-562 cells were subjected to SDS PAGE followed by western blot with 66089-1-Ig (Factor XII antibody) at dilution of 1:1000 incubated at room temperature for 1.5 hours.



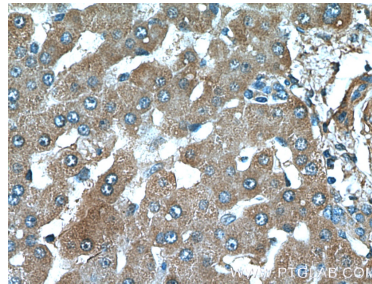
Immunofluorescent analysis of (4% PFA) fixed mouse liver tissue using Factor XII antibody (66089-1-Ig, Clone: 2E2F11) at dilution of 1:400 and CoraLite®488-Conjugated AffiniPure Goat Anti-Mouse IgG(H+L).



Immunofluorescent analysis of (-20°C Ethanol) fixed HepG2 cells using 66089-1-Ig(Factor XII antibody) at dilution of 1:100 and Alexa Fluor 488-conjugated AffiniPure Goat Anti-Mouse IgG(H+L).



Immunohistochemical analysis of paraffin-embedded human liver tissue slide using 66089-1-Ig (Factor XII antibody) at dilution of 1:200 (under 10x lens).



Immunohistochemical analysis of paraffin-embedded human liver tissue slide using 66089-1-Ig (Factor XII antibody) at dilution of 1:200 (under 40x lens).