

## Allgemeine Informationen

**Katalog-Nr.:**

66094-1-Ig

**Größe:**

150ul, Konzentration: 2400 µg/ml von197

Nanodrop und 1000 µg/ml durch die Bradford-Methode mit BSA als Standard;

**Wirt:**

Maus

**Isotyp:**

IgG2a

**Immunogen Katalognummer:**

AG10073

**GenBank-Zugangsnummer:**

BC048198

**GeneID (NCBI):**

**Vollständiger Name:**

alpha-2-HS-glycoprotein

**Berechnete Masse:**

367 aa, 39 kDa

**Beobachtete Masse:**

58 kDa

**Reinigungsmethode:**

Protein-A-Reinigung

**CloneNo.:**

1F6B9

**Empfohlene Verdünnungen:**

WB 1:2000-1:10000

IP 0.5-4.0 ug für IP und 1:1000-1:6000

für WB

IHC 1:20-1:200

IF 1:10-1:100

## Anwendungen

**Geprüfte Anwendungen:**

FC, IF, IHC, IP, WB, ELISA

**Getestete Reaktivität:**

Human

**Hinweis-IHC: Antigenmaskierung mit TE-Puffer pH 9,0 empfohlen. (\*) Wahlweise kann die Antigenmaskierung auch mit Citratpuffer pH 6,0 erfolgen.**

**Positivkontrollen:**

**WB** : HepG2-Zellen, humanes Herzgewebe, humanes Plasmagewebe

**IP** : HepG2-Zellen,

**IHC** : humanes Leberkarzinomgewebe, humanes Lebergewebe

**IF** : HepG2-Zellen,

## Hintergrundinformationen

Fetuin-A (alpha-2-HS-glycoprotein, AHSG), a liver borne plasma protein, contributes to the prevention of soft tissue calcification, modulates inflammation, reduces INS sensitivity and fosters weight gain following high fat diet or ageing. It is involved in several functions, such as endocytosis, brain development and the formation of bone tissue. The protein is commonly present in the cortical plate of the immature cerebral cortex and bone marrow hemopoietic matrix, and it has therefore been postulated that it participates in the development of the tissues.

## Lagerung

**Lagerungsbedingungen:**

Bei -20°C lagern. Nach dem Versand ein Jahr lang stabil

**Lagerungspuffer:**

PBS mit 0.02% Natriumazid und 50% Glycerin pH 7.3.

Aliquotieren ist nicht notwendig bei -20°C Lagerung

**\*\*\* 20ul-Größen enthalten 0.1% BSA**

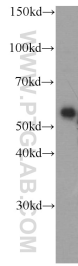
For technical support and original validation data for this product please contact:

T: 1 (888) 4PTGLAB (1-888-478-4522) (toll free in USA), or 1(312) 455-8498 (outside USA)

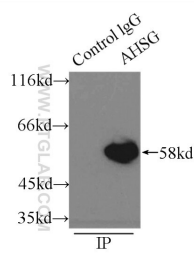
E: [proteintech@ptglab.com](mailto:proteintech@ptglab.com)  
W: [ptglab.com](http://ptglab.com)

**This product is exclusively available under Proteintech Group brand and is not available to purchase from any other manufacturer.**

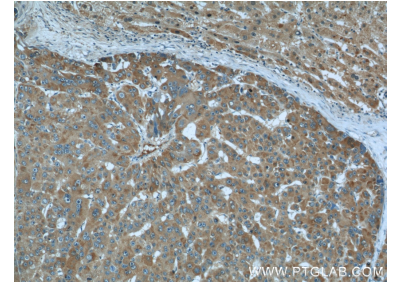
## Ausgewählte Validierungsdaten



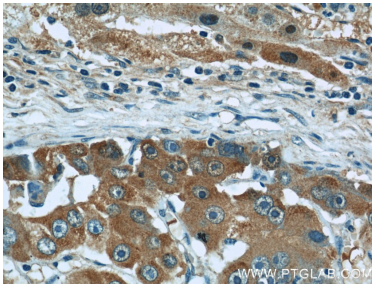
HepG2 cells were subjected to SDS PAGE followed by western blot with 66094-1-Ig (Fetuin-A antibody) at dilution of 1:5000 incubated at room temperature for 1.5 hours.



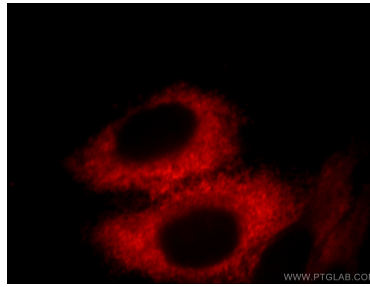
IP Result of anti-Fetuin-A (IP:66094-1-Ig, 3ug; Detection:66094-1-Ig 1:3000) with HepG2 cells lysate 6000ug.



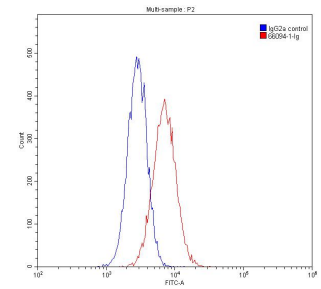
Immunohistochemical analysis of paraffin-embedded human liver cancer using 66094-1-Ig(Fetuin-A antibody) at dilution of 1:200 (under 10x lens).



Immunohistochemical analysis of paraffin-embedded human liver cancer using 66094-1-Ig(Fetuin-A antibody) at dilution of 1:200 (under 40x lens).



Immunofluorescent analysis of HepG2 cells, using AHSG antibody 66094-1-Ig at 1:25 dilution and Rhodamine-labeled goat anti-mouse IgG (red).



$1 \times 10^6$  HepG2 cells were stained with 0.20ug Fetuin-A antibody (66094-1-Ig, red) and control antibody (blue). Fixed with 90% MeOH.