

Nur für Forschungszwecke

Lamin B1 Monoklonaler Antikörper

Katalog-Nr.:66095-1-Ig

Vorgestelltes Produkt

261 Publikationen



Allgemeine Informationen

Katalog-Nr.:
66095-1-Ig

Größe:
150ul, Konzentration: 1000 µg/ml von4001
Nanodrop und 467 µg/ml durch die
Bradford-Methode mit BSA als
Standard;

Wirt:
Maus

Isotyp:
IgG1

Immunogen Katalognummer:
AG20522

GenBank-Zugangsnummer:
BC012295

GeneID (NCBI):

Vollständiger Name:
lamin B1

Berechnete Masse:
66 kDa

Beobachtete Masse:
66-70 kDa

Reinigungsmethode:
Protein-G-Reinigung

CloneNo.:
3C10G12

Empfohlene Verdünnungen:
WB 1:20000-1:100000

IP 0.5-4.0 µg für IP und 1:5000-1:50000
für WB
IHC 1:500-1:2000
IF 1:250-1:1000

Anwendungen

Geprüfte Anwendungen:

FC, IF, IHC, IP, WB, ELISA

In Publikationen genannte Anwendungen:

FC, IF, IHC, IP, WB

Getestete Reaktivität:

Human, Maus, Ratte

Zitierte Arten:

Human, Kaninchen, Maus, Ratte, Zebrafisch

Hinweis-IHC: Antigendemaskierung mit TE-Puffer pH 9,0 empfohlen. (*) Wahlweise kann die Antigendemaskierung auch mit Citratpuffer pH 6,0 erfolgen.

Positivkontrollen:

WB : NCI-H1299-Zellen, HEK-293-Zellen, HeLa-Zellen, HepG2-Zellen, Jurkat-Zellen, K-562-Zellen, Multizellen/-gewebe, NIH/3T3-Zellen, PC-12-Zellen

IP : HeLa-Zellen,

IHC : humanes Pankreaskarzinomgewebe, humanes Mammakarzinomgewebe

IF : HepG2-Zellen, HeLa-Zellen, Maus-Augengewebe

Hintergrundinformationen

Lamins are components of the nuclear lamina, a fibrous layer on the nucleoplasmic side of the inner nuclear membrane, which is thought to provide a framework for the nuclear envelope and may also interact with chromatin. The nuclear lamina consists of a two-dimensional matrix of proteins located next to the inner nuclear membrane. The lamin family of proteins make up the matrix and are highly conserved in evolution. During mitosis, the lamina matrix is reversibly disassembled as the lamin proteins are phosphorylated. Vertebrate lamins consist of two types, A and B. This gene encodes one of the two B type proteins, B1. This protein is not suitable for samples where the nuclear envelope has been removed.

Bemerkenswerte Veröffentlichungen

Verfasser	Pubmed ID	Journal	Anwendung
Juan M Barajas	34599880	Am J Pathol	WB
Xiangmin Zhang	36069548	J Virol	WB
Chie Nakashima	32998265	Int J Mol Sci	WB

Lagerung

Lagerungsbedingungen:

Bei -20°C lagern. Nach dem Versand ein Jahr lang stabil

Lagerungspuffer:

PBS mit 0.02% Natriumazid und 50% Glycerin pH 7.3.

Aliquotieren ist nicht notwendig bei -20°C Lagerung

*** 20ul-Größen enthalten 0.1% BSA

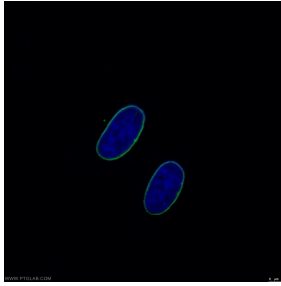
For technical support and original validation data for this product please contact:

T: 1 (888) 4PTGLAB (1-888-478-4522) (toll free in USA), or 1(312) 455-8498 (outside USA)

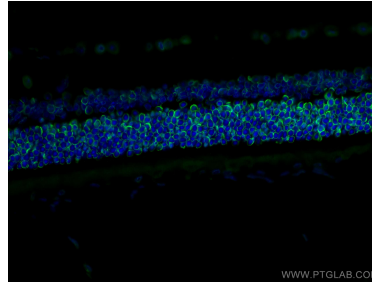
E: proteintech@ptglab.com
W: ptglab.com

This product is exclusively available under Proteintech Group brand and is not available to purchase from any other manufacturer.

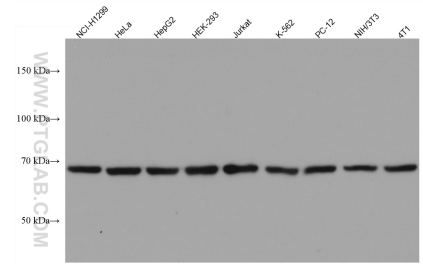
Ausgewählte Validierungsdaten



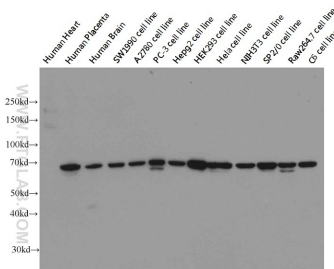
Immunofluorescent analysis of (-20°C Ethanol) fixed HepG2 cells using 66095-1-Ig (Lamin B1 antibody) at dilution of 1:500 and CoraLite488-Conjugated AffiniPure Goat Anti-Mouse IgG(H+L).



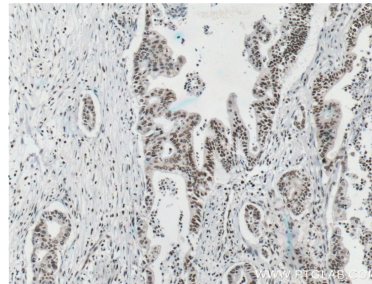
Immunofluorescent analysis of (4% PFA) fixed mouse eye tissue using Lamin B1 antibody (66095-1-Ig, Clone: 3C10G12) at dilution of 1:400 and CoraLite®488-Conjugated AffiniPure Goat Anti-Mouse IgG(H+L).



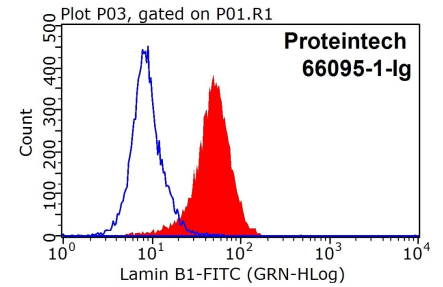
Various lysates were subjected to SDS PAGE followed by western blot with 66095-1-Ig (Lamin B1 antibody) at dilution of 1:100000 incubated at room temperature for 1.5 hours.



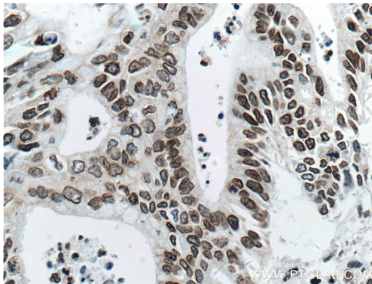
Western blot on multiple cells/tissues with anti-LMN B1 (66095-1-Ig) at dilution 1:20000.



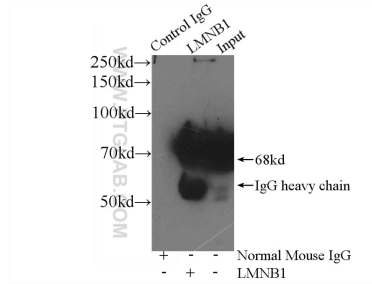
Immunohistochemical analysis of paraffin-embedded human pancreas cancer tissue slide using 66095-1-Ig (Lamin B1 antibody) at dilution of 1:1000 (under 10x lens). Heat mediated antigen retrieval with Tris-EDTA buffer (pH 9.0).



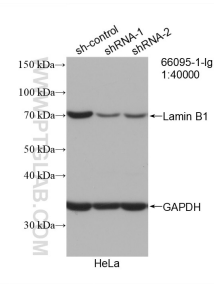
1X10⁶ HeLa cells were stained with 0.2ug Lamin B1 antibody (66095-1-Ig, red) and control antibody (blue). Fixed with 90% MeOH blocked with 3% BSA (30 min). FITC-Goat anti-Mouse IgG with dilution 1:100.



Immunohistochemical analysis of paraffin-embedded human pancreas cancer tissue slide using 66095-1-Ig (Lamin B1 antibody) at dilution of 1:1000 (under 40x lens). Heat mediated antigen retrieval with Tris-EDTA buffer (pH 9.0).



IP Result of anti-Lamin B1 (IP:66095-1-Ig, 4ug; Detection:66095-1-Ig 1:20000) with HeLa cells lysate 3560ug.



WB result of Lamin B1 antibody (66095-1-Ig; 1:40000; incubated at room temperature for 1.5 hours) with sh-Control and sh-Lamin B1 transfected HeLa cells.