

## Allgemeine Informationen

<b>Katalog-Nr.:</b> 66103-1-Ig	<b>GenBank-Zugangsnummer:</b> BC109306	<b>Reinigungsmethode:</b> Protein-A-Reinigung
<b>Größe:</b> 150ul , Konzentration: 3400 µg/ml von933 Nanodrop und 2187 µg/ml durch die Bradford-Methode mit BSA als Standard;	<b>GeneID (NCBI):</b> Vollständiger Name: CD22 molecule	<b>CloneNo.:</b> 7A2F1
<b>Wirt:</b> Maus	<b>Berechnete Masse:</b> 847 aa, 95 kDa	<b>Empfohlene Verdünnungen:</b> WB 1:2500-1:10000 IHC 1:10000-1:40000 IF 1:50-1:500
<b>Isotyp:</b> IgG2a	<b>Beobachtete Masse:</b> 135 kDa	
<b>Immunogen Katalognummer:</b> AG17986		

## Anwendungen

<b>Geprüfte Anwendungen:</b> IF, IHC, WB, ELISA	<b>Positivkontrollen:</b>
<b>Getestete Reaktivität:</b> Human	<b>WB :</b> Ramos-Zellen, Daudi-Zellen, Raji-Zellen
<b>Hinweis-IHC: Antigenmaskierung mit TE-Puffer pH 9,0 empfohlen. (*) Wahlweise kann die Antigenmaskierung auch mit Citratpuffer pH 6,0 erfolgen.</b>	<b>IHC :</b> humanes Tonsillitisgewebe, humanes Appendizitis-Gewebe
	<b>IF :</b> humanes Tonsillitisgewebe, Raji-Zellen

## Hintergrundinformationen

CD22, also known as Siglec-2 (sialic acid binding Ig-like lectin 2) or BL-CAM (B-lymphocyte cell adhesion molecule), is a 130-140 kDa, B-cell restricted, type I transmembrane glycoprotein belonging to the immunoglobulin gene superfamily. The expression of CD22 is developmentally regulated. It is expressed at low levels in the cytoplasm of pro-B and pre-B cells and present on the cell surface only at mature stages of B-cell differentiation. Cell surface expression is lost during terminal differentiation into plasma cell and after B-cell activation. CD22 is an inhibitory receptor for B-cell receptor (BCR) signalling, preferentially binds to alpha-2,6-linked sialic acid and mediates B-cell B-cell interactions. It plays a crucial role in activation and differentiation of the B-cell.

## Lagerung

**Lagerungsbedingungen:**  
Bei -20°C lagern. Nach dem Versand ein Jahr lang stabil

**Lagerungspuffer:**  
PBS mit 0.02% Natriumazid und 50% Glycerin pH 7.3.

**Aliquotieren ist nicht notwendig bei -20°C Lagerung**

\*\*\* 20ul-Größen enthalten 0.1% BSA

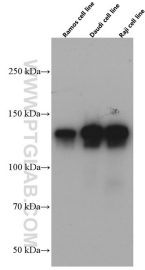
For technical support and original validation data for this product please contact:

T: 1 (888) 4PTGLAB (1-888-478-4522) (toll free  
in USA), or 1(312) 455-8498 (outside USA)

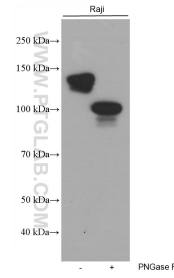
E: proteintech@ptglab.com  
W: ptglab.com

This product is exclusively available under Proteintech Group brand and is not available to purchase from any other manufacturer.

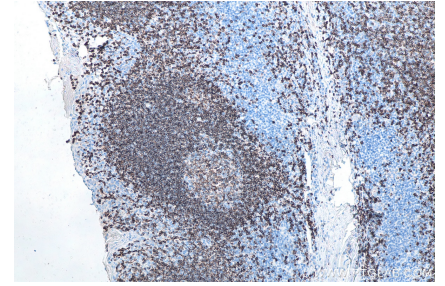
## Ausgewählte Validierungsdaten



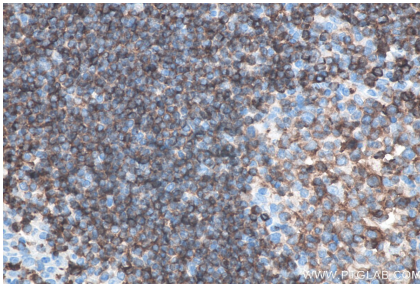
Ramos, Daudi, and Raji cells were subjected to SDS PAGE followed by western blot with 66103-1-Ig (CD22 antibody) at dilution of 1:5000 incubated at room temperature for 1.5 hours.



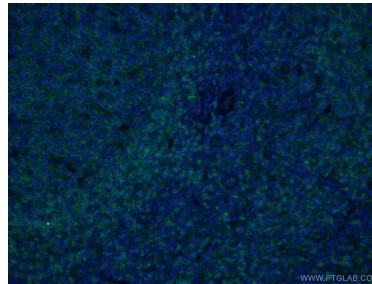
Untreated and PNGase F-treated lysates of Raji cells were subjected to SDS PAGE followed by western blot with 66103-1-Ig (CD22 antibody) at dilution of 1:20000 incubated at room temperature for 1.5 hours. PNGase F was obtained from Atagenix (cat.NO. ata808).



Immunohistochemical analysis of paraffin-embedded human tonsillitis tissue slide using 66103-1-Ig (CD22 antibody) at dilution of 1:20000 (under 10x lens). Heat mediated antigen retrieval with Tris-EDTA buffer (pH 9.0).



Immunohistochemical analysis of paraffin-embedded human tonsillitis tissue slide using 66103-1-Ig (CD22 antibody) at dilution of 1:20000 (under 40x lens). Heat mediated antigen retrieval with Tris-EDTA buffer (pH 9.0).



Immunofluorescent analysis of (4% PFA) fixed human tonsillitis tissue using 66103-1-Ig (CD22 antibody) at dilution of 1:100 and Alexa Fluor 488-conjugated AffiniPure Goat Anti-Mouse IgG(H+L).