

## Allgemeine Informationen

<b>Katalog-Nr.:</b> 66104-1-Ig	<b>GenBank-Zugangsnummer:</b> BC020633	<b>Reinigungsmethode:</b> Protein-A-Reinigung
<b>Größe:</b> 150ul , Konzentration: 1400 µg/ml von5950 Nanodrop und 1213 µg/ml durch die Bradford-Methode mit BSA als Standard;	<b>GeneID (NCBI):</b> retinol binding protein 4, plasma	<b>CloneNo.:</b> 1D12B11
<b>Wirt:</b> Maus	<b>Vollständiger Name:</b> retinol binding protein 4, plasma	<b>Empfohlene Verdünnungen:</b> WB 1:1000-1:8000 IHC 1:20-1:200 IF 1:200-1:800
<b>Isotyp:</b> IgG2a	<b>Berechnete Masse:</b> 201 aa, 23 kDa	
<b>Immunogen Katalognummer:</b> AG19295	<b>Beobachtete Masse:</b> 23 kDa	

## Anwendungen

<b>Geprüfte Anwendungen:</b> FC, IF, IHC, WB, ELISA	<b>Positivkontrollen:</b>
<b>Getestete Reaktivität:</b> Human	<b>WB :</b> Human Blood, Gewebe
<b>Hinweis-IHC: Antigendemaskierung mit TE-Puffer pH 9,0 empfohlen. (*) Wahlweise kann die Antigendemaskierung auch mit Citratpuffer pH 6,0 erfolgen.</b>	<b>IHC :</b> humanes Leberkarzinomgewebe, humanes Lebergewebe
	<b>IF :</b> humanes Leberkarzinomgewebe,

## Hintergrundinformationen

RBP4 (retinol-binding protein 4) is a carrier protein that transports vitamin A (retinol) from the liver to the peripheral tissues. Synthesized primarily by hepatocytes and adipocytes as a 21 kDa non-glycosylated protein, RBP4 is secreted into the circulation as a retinol-RBP4 complex. In plasma the RBP4-retinol complex is bound to transthyretin (TRR), which prevents prevent kidney filtration. Two truncated forms of RBP4, RBP4-L (truncated at Leu-183) and RBP4-LL (truncated at Leu-182 and Leu-183), exist by proteolytic process. RBP4-L and RBP4-LL, which do not bind TTR, are normally excreted into the urine but accumulate in the serum during renal failure. Urinary RBP4 has been reported as marker for glomerular disease. RBP4 also was identified as an adipokine that elevated in some INS-resistant states. Measurement of serum RBP4 could be used to assess the risk of INS resistance, type 2 diabetes, obesity, and cardiovascular disease. (18752671, 16034410)

## Lagerung

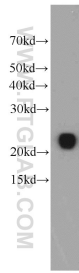
**Lagerungsbedingungen:**  
Bei -20°C lagern. Nach dem Versand ein Jahr lang stabil  
**Lagerungspuffer:**  
PBS mit 0.02% Natriumazid und 50% Glycerin pH 7.3.  
Aliquotieren ist nicht notwendig bei -20°C Lagerung

\*\*\* 20ul-Größen enthalten 0.1% BSA

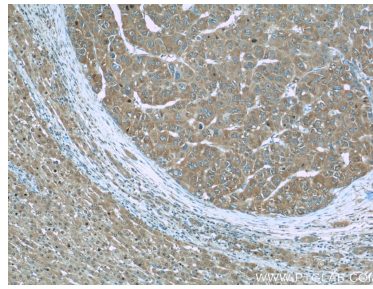
For technical support and original validation data for this product please contact:  
T: 1 (888) 4PTGLAB (1-888-478-4522) (toll free in USA), or 1(312) 455-8498 (outside USA)  
E: proteintech@ptglab.com  
W: ptglab.com

This product is exclusively available under Proteintech Group brand and is not available to purchase from any other manufacturer.

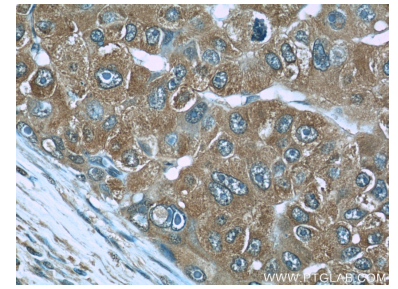
## Ausgewählte Validierungsdaten



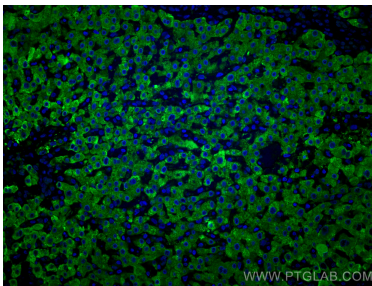
human blood were subjected to SDS PAGE followed by western blot with 66104-1-Ig (RBP4 antibody) at dilution of 1:4000 incubated at room temperature for 1.5 hours.



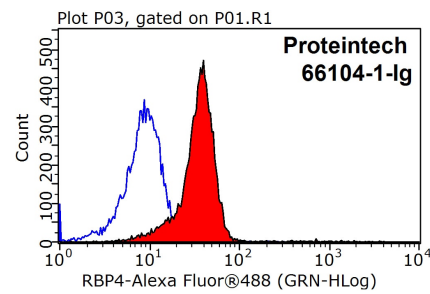
Immunohistochemical analysis of paraffin-embedded human liver cancer slide using 66104-1-Ig (RBP4 Antibody) at dilution of 1:50.



Immunohistochemical analysis of paraffin-embedded human liver cancer slide using 66104-1-Ig (RBP4 Antibody) at dilution of 1:50.



Immunofluorescent analysis of (4% PFA) fixed human liver cancer tissue using RBP4 antibody (66104-1-Ig, Clone: 1D12B11) at dilution of 1:400 and CoraLite®488-Conjugated AffiniPure Goat Anti-Mouse IgG(H+L).



1X10<sup>6</sup> HepG2 cells were stained with 0.2ug RBP4 antibody (66104-1-Ig, red) and control antibody (blue). Fixed with 90% MeOH blocked with 3% BSA (30 min). Alexa Fluor 488-conjugated AffiniPure Goat Anti-Mouse IgG(H+L) with dilution 1:1000.