

Allgemeine Informationen

Katalog-Nr.: 66105-1-Ig	GenBank-Zugangsnummer: BC001756	Reinigungsmethode: Protein-A-Reinigung
Größe: 150ul , Konzentration: 820 µg/ml durch die Bradford-Methode mit BSA als Standard;	GeneID (NCBI): 5236	CloneNo.: 2G5A8
Wirt: Maus	Vollständiger Name: phosphoglucomutase 1	Empfohlene Verdünnungen: WB 1:2000-1:10000 IHC 1:50-1:500 IF 1:20-1:200
Isotyp: IgG2b	Berechnete Masse: 61 kDa	
Immunogen Katalognummer: AG7294	Beobachtete Masse: 61 kDa	

Anwendungen

Geprüfte Anwendungen: IF, IHC, WB, ELISA	Positivkontrollen:
Getestete Reaktivität: Hausschwein, Human, Kaninchen, Maus, Ratte	WB : HeLa-Zellen, Hausschwein-Herzgewebe, Hausschwein-Lebergewebe, HepG2-Zellen, Kaninchenherzgewebe, Kaninchenlebergewebe, Mauslebergewebe, MDA-MB-231-Zellen, Rattenlebergewebe
Hinweis-IHC: Antigendemaskierung mit TE-Puffer pH 9,0 empfohlen. (*) Wahlweise kann die Antigendemaskierung auch mit Citratpuffer pH 6,0 erfolgen.	IHC : humanes Kolongewebe, humanes Leberkarzinomgewebe
	IF : HepG2-Zellen,

Hintergrundinformationen

PGM1(Phosphoglucomutase-1) is also named as glucose phosphomutase 1 and belongs to the phosphohexose mutase family. It catalyzes the transfer of phosphate between the 1 and 6 positions of glucose. In most cell types, PGM1 isozymes predominate, representing about 90% of total PGM activity. One exception is red cells, where PGM2 is a major isozyme(PMID:8257433). Defects in PGM1 are the cause of glycogen storage disease type 14 (GSD14) (PMID:19625727). It has 2 isoforms produced by alternative splicing.

Lagerung

Lagerungsbedingungen:
Bei -20°C lagern. Nach dem Versand ein Jahr lang stabil

Lagerungspuffer:
PBS mit 0.02% Natriumazid und 50% Glycerin pH 7.3.

Aliquotieren ist nicht notwendig bei -20°C Lagerung

*** 20ul-Größen enthalten 0.1% BSA

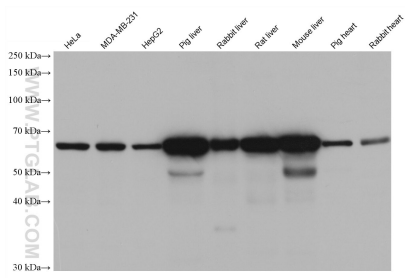
For technical support and original validation data for this product please contact:

T: 1 (888) 4PTGLAB (1-888-478-4522) (toll free in USA), or 1(312) 455-8498 (outside USA)

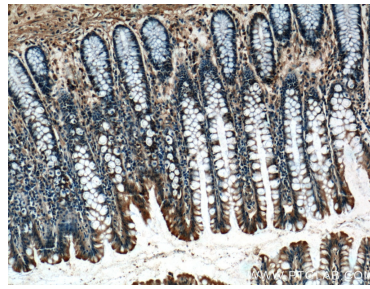
E: proteintech@ptglab.com
W: ptglab.com

This product is exclusively available under Proteintech Group brand and is not available to purchase from any other manufacturer.

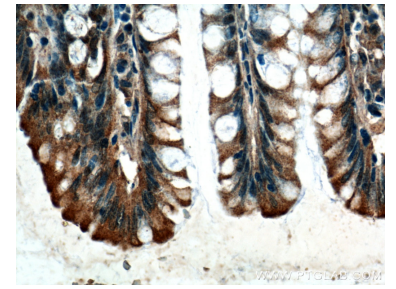
Ausgewählte Validierungsdaten



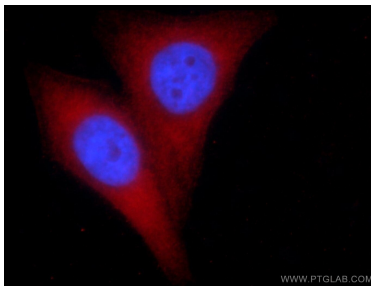
Various lysates were subjected to SDS PAGE followed by western blot with 66105-1-Ig (PGM1 antibody) at dilution of 1:5000 incubated at room temperature for 1.5 hours.



Immunohistochemical analysis of paraffin-embedded human colon tissue slide using 66105-1-Ig (PGM1 Antibody) at dilution of 1:200 (under 10x lens).



Immunohistochemical analysis of paraffin-embedded human colon tissue slide using 66105-1-Ig (PGM1 Antibody) at dilution of 1:200 (under 40x lens).



Immunofluorescent analysis of HepG2 cells using 66105-1-Ig (PGM1 antibody) at dilution of 1:50 and Rhodamine-Goat anti-Mouse IgG.