

## Allgemeine Informationen

<b>Katalog-Nr.:</b> 66110-1-Ig	<b>GenBank-Zugangsnummer:</b> BC021236	<b>Reinigungsmethode:</b> Protein-A-Reinigung
<b>Größe:</b> 150ul , Konzentration: 2000 µg/ml von1327 Nanodrop;	<b>GeneID (NCBI):</b> 2A7B2	<b>CloneNo.:</b> 2A7B2
<b>Wirt:</b> Maus	<b>Vollständiger Name:</b> cytochrome c oxidase subunit IV isoform 1	<b>Empfohlene Verdünnungen:</b> WB 1:2000-1:8000 IHC 1:250-1:1000 IF 1:50-1:500
<b>Isotyp:</b> IgG1	<b>Berechnete Masse:</b> 19.6 kDa	
<b>Immunogen Katalognummer:</b> AG20551	<b>Beobachtete Masse:</b> 17-18 kDa	

## Anwendungen

### Geprüfte Anwendungen:

FC, IF, IHC, WB, ELISA

### In Publikationen genannte Anwendungen:

IF, WB

### Getestete Reaktivität:

Human

### Zitierte Arten:

Human, Maus, Ratte

**Hinweis-IHC: Antigenmaskierung mit TE-Puffer pH 9,0 empfohlen. (\*) Wahlweise kann die Antigenmaskierung auch mit Citratpuffer pH 6,0 erfolgen.**

### Positivkontrollen:

**WB :** HeLa-Zellen, A431-Zellen, HEK-293-Zellen, HepG2-Zellen, Jurkat-Zellen, K-562-Zellen, LNCaP-Zellen

**IHC :** humanes Prostatakarzinomgewebe, humanes Herzgewebe, humanes Pankreasgewebe

**IF :** HepG2-Zellen,

## Hintergrundinformationen

COX4l1, also named as COX4 and COXIV-1, belongs to the cytochrome c oxidase IV family. It is one of the nuclear-coded polypeptide chains of cytochrome c oxidase, the terminal oxidase in mitochondrial electron transport. COX4l1 is a marker for mitochondria. It has two isoforms (isoform 1 and 2). Isoform 1(COX4l1) is ubiquitously expressed and isoform 2 is highly expressed in lung tissues. COX4l1 is commonly used as a loading control. This antibody is specific to COX4l1 and do not cross reacts with COX4l2.

## Bemerkenswerte Veröffentlichungen

Verfasser	Pubmed ID	Journal	Anwendung
Zi-Chao Wang	36163178	Cell Death Dis	WB
Xingfeng Liu	36131205	Nat Metab	WB
Xin-Hui Wang	34526554	Sci Rep	IF

## Lagerung

### Lagerungsbedingungen:

Bei -20°C lagern. Nach dem Versand ein Jahr lang stabil

### Lagerungspuffer:

PBS mit 0.02% Natriumazid und 50% Glycerin pH 7.3.

Aliquotieren ist nicht notwendig bei -20°C Lagerung

**\*\*\* 20ul-Größen enthalten 0.1% BSA**

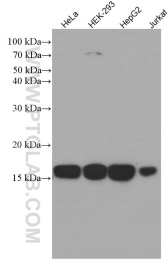
For technical support and original validation data for this product please contact:

T: 1 (888) 4PTGLAB (1-888-478-4522) (toll free in USA), or 1(312) 455-8498 (outside USA)

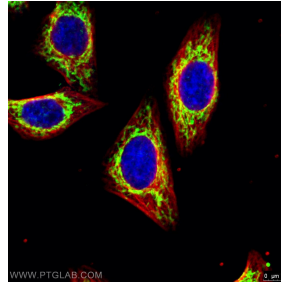
E: [proteintech@ptglab.com](mailto:proteintech@ptglab.com)  
 W: [ptglab.com](http://ptglab.com)

**This product is exclusively available under Proteintech Group brand and is not available to purchase from any other manufacturer.**

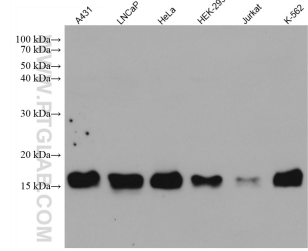
## Ausgewählte Validierungsdaten



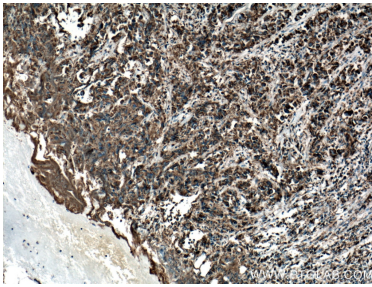
Various lysates were subjected to SDS PAGE followed by western blot with 66110-1-Ig (COXIV antibody) at dilution of 1:3000 incubated at room temperature for 1.5 hours.



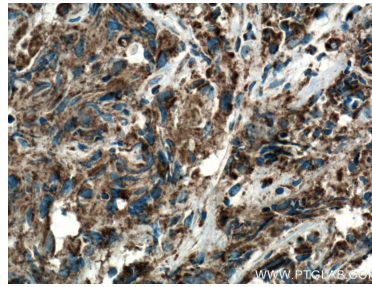
Immunofluorescent analysis of (4% PFA) fixed HepG2 cells using 66110-1-Ig (COXIV antibody, 1:100) at dilution of 1:100 and Alexa Fluor 488-Conjugated AffiniPure Goat Anti-Mouse IgG(H+L); Red is the staining with alpha Tubulin antibody (11224-1-AP, 1:100).



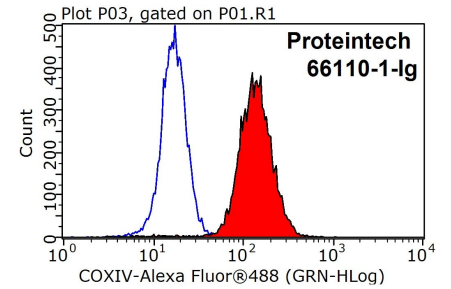
Various lysates were subjected to SDS PAGE followed by western blot with 66110-1-Ig (COXIV antibody) at dilution of 1:20000 incubated at room temperature for 1.5 hours.



Immunohistochemical analysis of paraffin-embedded human prostate cancer tissue slide using 66110-1-Ig (COXIV antibody) at dilution of 1:500 (under 10x lens. Heat mediated antigen retrieval with Tris-EDTA buffer (pH 9.0).



Immunohistochemical analysis of paraffin-embedded human prostate cancer tissue slide using 66110-1-Ig (COXIV antibody) at dilution of 1:500 (under 40x lens. Heat mediated antigen retrieval with Tris-EDTA buffer (pH 9.0).



1X10<sup>6</sup> HeLa cells were stained with 0.2ug COXIV antibody (66110-1-Ig, red) and control antibody (blue). Fixed with 90% MeOH blocked with 3% BSA (30 min). Alexa Fluor 488-conjugated AffiniPure Goat Anti-Mouse IgG(H+L) with dilution 1:1000.