

Nur für Forschungszwecke

# TFIP11 Monoklonaler Antikörper

Katalog-Nr.:66114-1-Ig



## Allgemeine Informationen

<b>Katalog-Nr.:</b> 66114-1-Ig	<b>GenBank-Zugangsnummer:</b> BC033080	<b>Reinigungsmethode:</b> Protein-A-Reinigung
<b>Größe:</b> 150ul , Konzentration: 953 µg/ml durch die Bradford-Methode mit BSA als Standard;	<b>GeneID (NCBI):</b> 24144	<b>CloneNo.:</b> 1A1C8
<b>Wirt:</b> Maus	<b>Vollständiger Name:</b> tuftelin interacting protein 11	<b>Empfohlene Verdünnungen:</b> WB 1:500-1:2000 IHC 1:250-1:1000 IF 1:50-1:500
<b>Isotyp:</b> IgG2b	<b>Berechnete Masse:</b> 97 kDa	
<b>Immunogen Katalognummer:</b> AG5821	<b>Beobachtete Masse:</b> 97 kDa	

## Anwendungen

### Geprüfte Anwendungen:

IF, IHC, WB, ELISA

### Getestete Reaktivität:

Human

**Hinweis-IHC: Antigendemaskierung mit TE-Puffer pH 9,0 empfohlen. (\*) Wahlweise kann die Antigendemaskierung auch mit Citratpuffer pH 6,0 erfolgen.**

### Positivkontrollen:

**WB** : HeLa-Zellen, HEK-293-Zellen, HepG2-Zellen, humanes Hirngewebe, humanes Hodengewebe, Jurkat-Zellen, K-562-Zellen, LNCaP-Zellen, MCF-7-Zellen

**IHC** : humanes Mammakarzinomgewebe, humanes Leberkarzinomgewebe, humanes Prostatakarzinomgewebe

**IF** : HeLa-Zellen,

## Hintergrundinformationen

TFIP11, also named as Tuftelin-interacting protein 11 or Septin and tuftelin-interacting protein 1, is a 837 amino acid protein, which contains one G-patch domain and belongs to the TFP11/STIP family. TFIP11 may localizes in the nucleus and cytoplasm. TFIP11 is involved in pre-mRNA splicing, specifically in spliceosome disassembly during late-stage splicing events. TFIP11 may play a role in the differentiation of ameloblasts and odontoblasts or in the forming of the enamel extracellular matrix.

## Lagerung

### Lagerungsbedingungen:

Bei -20°C lagern. Nach dem Versand ein Jahr lang stabil

### Lagerungspuffer:

PBS mit 0.02% Natriumazid und 50% Glycerin pH 7.3.

Aliquotieren ist nicht notwendig bei -20°C Lagerung

\*\*\* 20ul-Größen enthalten 0.1% BSA

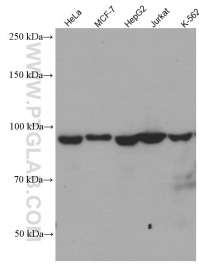
For technical support and original validation data for this product please contact:

T: 1 (888) 4PTGLAB (1-888-478-4522) (toll free in USA), or 1(312) 455-8498 (outside USA)

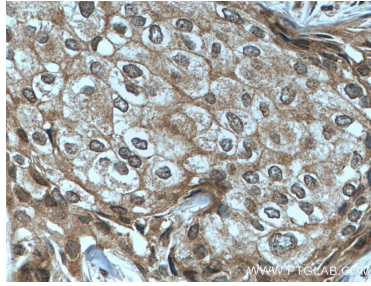
E: proteintech@ptglab.com  
W: ptglab.com

This product is exclusively available under Proteintech Group brand and is not available to purchase from any other manufacturer.

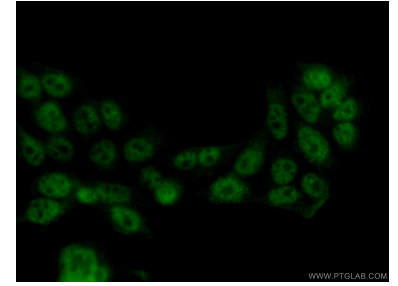
## Ausgewählte Validierungsdaten



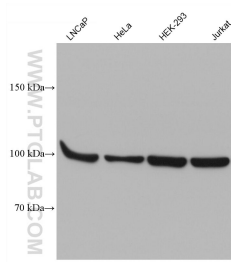
Various lysates were subjected to SDS PAGE followed by western blot with 66114-1-Ig (TFIP11 antibody) at dilution of 1:1000 incubated at room temperature for 1.5 hours.



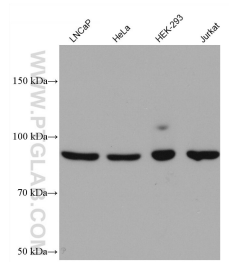
Immunohistochemical analysis of paraffin-embedded human breast cancer tissue slide using 66114-1-Ig (TFIP11 antibody) at dilution of 1:500 (under 40x lens. Heat mediated antigen retrieval with Tris-EDTA buffer (pH 9.0)).



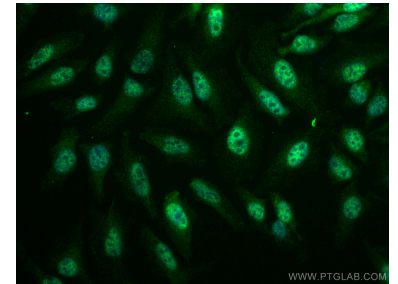
Immunofluorescent analysis of (10% Formaldehyde) fixed HeLa cells using 66114-1-Ig (TFIP11 antibody) at dilution of 1:100 and Alexa Fluor 488-conjugated AffiniPure Goat Anti-Mouse IgG(H+L).



Various lysates were subjected to SDS PAGE followed by western blot with 66114-1-Ig (TFIP11 antibody) at dilution of 1:5000 incubated at room temperature for 1.5 hours.



Various lysates were subjected to SDS PAGE followed by western blot with 66114-1-Ig (TFIP11 antibody) at dilution of 1:3000 incubated at room temperature for 1.5 hours.



Immunofluorescent analysis of (4% PFA) fixed HeLa cells using TFIP11 antibody (66114-1-Ig, Clone: 1A1C8) at dilution of 1:400 and CoraLite@488-Conjugated AffiniPure Goat Anti-Mouse IgG(H+L).