

Allgemeine Informationen

Katalog-Nr.: 66120-1-Ig	GenBank-Zugangsnummer: BC003613	Reinigungsmethode: Protein-A-Reinigung
Größe: 150ul , Konzentration: 1040 µg/ml durch die Bradford-Methode mit BSA als Standard;	GeneID (NCBI): 230	CloneNo.: 5H7A5
Wirt: Maus	Vollständiger Name: aldolase C, fructose-bisphosphate	Empfohlene Verdünnungen: WB 1:5000-1:50000 IHC 1:50-1:500 IF 1:50-1:400
Isotyp: IgG1	Berechnete Masse: 39 kDa	
Immunogen Katalognummer: AG6779	Beobachtete Masse: 39 kDa	

Anwendungen

Geprüfte Anwendungen: IF, IHC, WB, ELISA	Positivkontrollen:
Getestete Reaktivität: Human	WB : humanes Herzgewebe, humanes Hirngewebe
Hinweis-IHC: Antigendemaskierung mit TE-Puffer pH 9,0 empfohlen. (*) Wahlweise kann die Antigendemaskierung auch mit Citratpuffer pH 6,0 erfolgen.	IHC : humanes Leberkarzinomgewebe, Maushirngewebe, Mauslebergewebe
	IF : HepG2-Zellen,

Hintergrundinformationen

Fructose-bisphosphate aldolase C (ALDOC) reversibly cleaves FBP and F1-P to glyceraldehyde 3-phosphate and dihydroxyacetone phosphate and is strongly expressed in mammalian brain together with ALDOA and is also present in the heart and spleen of some species (PMID:9363598). It is involved in glycolysis as an important enzyme. Phospholipase D2 and inositol 1,4,5-triphosphate interact with ALDOC in signal transduction. Meanwhile, the protein expression of ALDOC has been reported to be regulated in brain tumor, hepatomas, and lung cancer (PMID:21548097).

Lagerung

Lagerungsbedingungen:
Bei -20°C lagern. Nach dem Versand ein Jahr lang stabil
Lagerungspuffer:
PBS mit 0.02% Natriumazid und 50% Glycerin pH 7.3.
Aliquotieren ist nicht notwendig bei -20°C Lagerung

*** 20ul-Größen enthalten 0.1% BSA

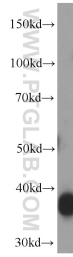
For technical support and original validation data for this product please contact:

T: 1 (888) 4PTGLAB (1-888-478-4522) (toll free in USA), or 1(312) 455-8498 (outside USA)

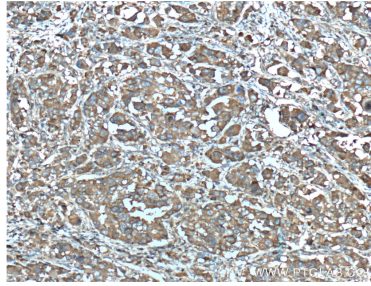
E: proteintech@ptglab.com
W: ptglab.com

This product is exclusively available under Proteintech Group brand and is not available to purchase from any other manufacturer.

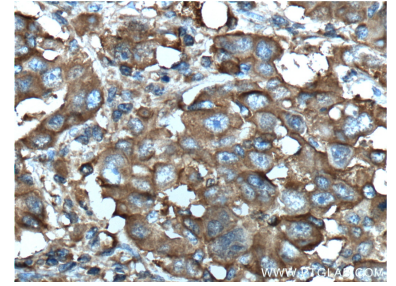
Ausgewählte Validierungsdaten



human heart tissue were subjected to SDS PAGE followed by western blot with 66120-1-Ig (Aldolase C antibody) at dilution of 1:10000 incubated at room temperature for 1.5 hours.



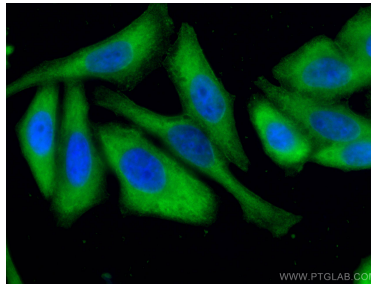
Immunohistochemical analysis of paraffin-embedded human liver cancer tissue slide using 66120-1-Ig (Aldolase C antibody at dilution of 1:200 (under 10x lens). Heat mediated antigen retrieval with Tris-EDTA buffer (pH 9.0).



Immunohistochemical analysis of paraffin-embedded human liver cancer tissue slide using 66120-1-Ig (Aldolase C antibody at dilution of 1:200 (under 40x lens). Heat mediated antigen retrieval with Tris-EDTA buffer (pH 9.0).



Immunofluorescent analysis of HepG2 cells using 66120-1-Ig (Aldolase C antibody) at dilution of 1:50 and Rhodamine-Goat anti-Mouse IgG.



Immunofluorescent analysis of (-20°C Ethanol) fixed HepG2 cells using Aldolase C antibody (66120-1-Ig, Clone: 5H7A5) at dilution of 1:400 and CoraLite®488-Conjugated AffiniPure Goat Anti-Mouse IgG(H+L).