

Nur für Forschungszwecke

RAC1 Monoklonaler Antikörper

Katalog-Nr.: 66122-1-Ig

Vorgestelltes Produkt

26 Publikationen



Allgemeine Informationen

Katalog-Nr.:

66122-1-Ig

Größe:

150ul, Konzentration: 1235 µg/ml von 5879

Nanodrop und 700 µg/ml durch die Bradford-Methode mit BSA als Standard;

Wirt:

Maus

Isotyp:

IgG2b

Immunogen Katalognummer:

AG17779

GenBank-Zugangsnummer:

BC004247

GeneID (NCBI):

5879

Vollständiger Name:

ras-related C3 botulinum toxin substrate 1 (rho family, small GTP binding protein Rac1)

Berechnete Masse:

21 kDa

Beobachtete Masse:

21 kDa

Reinigungsmethode:

Protein-A-Reinigung

CloneNo.:

4A4B11

Empfohlene Verdünnungen:

WB 1:1000-1:5000

IP 0.5-4.0 µg für IP und 1:500-1:1000

für WB

IHC 1:50-1:500

IF 1:50-1:500

Anwendungen

Geprüfte Anwendungen:

IF, IHC, IP, WB, ELISA

In Publikationen genannte Anwendungen:

IF, IHC, IP, PLA, WB

Getestete Reaktivität:

Human, Maus, Ratte

Zitierte Arten:

Hausschwein, Human, Maus, Ratte

Hinweis-IHC: Antigendemaskierung mit TE-Puffer pH 9,0 empfohlen. (*) Wahlweise kann die Antigendemaskierung auch mit Citratpuffer pH 6,0 erfolgen.

Positivkontrollen:

WB: HEK-293-Zellen, HeLa-Zellen, HL-60-Zellen, humanes Hirngewebe, HUVEC-Zellen, NIH/3T3-Zellen, RAW 264.7-Zellen

IP: HL-60-Zellen, HL-60-Zellen, HUVEC-Zellen, NIH/3T3-Zellen, RAW 264.7-Zellen

IHC: humanes Kolonkarzinomgewebe,

IF: NIH/3T3-Zellen, HeLa-Zellen

Hintergrundinformationen

RAC1b, also named as TC25, belongs to the small GTPase superfamily and Rho family. RAC1 is a plasma membrane-associated small GTPase which cycles between active GTP-bound and inactive GDP-bound states. In its active state, it binds to a variety of effector proteins to regulate cellular responses such as secretory processes, phagocytosis of apoptotic cells, epithelial cell polarization and growth-factor induced formation of membrane ruffles.

Bemerkenswerte Veröffentlichungen

Verfasser	Pubmed ID	Journal	Anwendung
Qing Guan	36211372	Front Immunol	IF
Yu-Yuan Zhang	36259516	J Biol Chem	WB
Teng Zhou	25212524	Biomaterials	WB

Lagerung

Lagerungsbedingungen:

Bei -20°C lagern. Nach dem Versand ein Jahr lang stabil

Lagerungspuffer:

PBS mit 0.02% Natriumazid und 50% Glycerin pH 7.3.

Aliquotieren ist nicht notwendig bei -20°C Lagerung

***** 20ul-Größen enthalten 0.1% BSA**

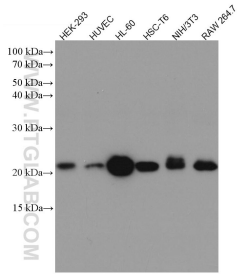
For technical support and original validation data for this product please contact:

T: 1 (888) 4PTGLAB (1-888-478-4522) (toll free in USA), or 1(312) 455-8498 (outside USA)

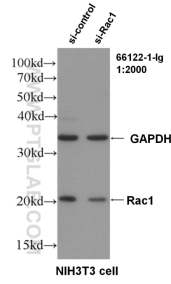
E: proteintech@ptglab.com
W: ptglab.com

This product is exclusively available under Proteintech Group brand and is not available to purchase from any other manufacturer.

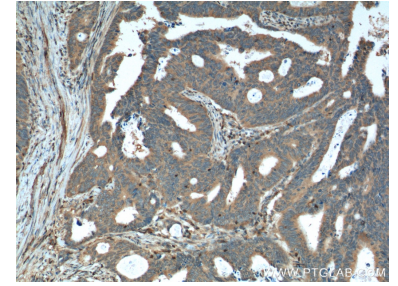
Ausgewählte Validierungsdaten



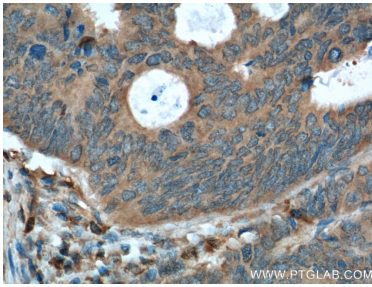
Various lysates were subjected to SDS PAGE followed by western blot with 66122-1-Ig (Rac1 antibody) at dilution of 1:5000 incubated at room temperature for 1.5 hours.



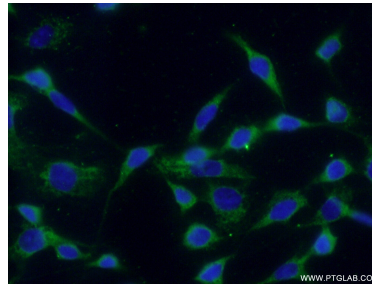
WB result of RAC1 antibody (66122-1-Ig, 1:2000) with si-control and si-RAC1 transfected NIH3T3 cells.



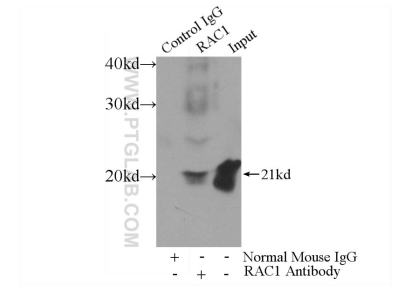
Immunohistochemical analysis of paraffin-embedded human colon cancer tissue slide using 66122-1-Ig (RAC1 Antibody) at dilution of 1:400 (under 10x lens).



Immunohistochemical analysis of paraffin-embedded human colon cancer tissue slide using 66122-1-Ig (RAC1 Antibody) at dilution of 1:400 (under 40x lens).



Immunofluorescent analysis of (-20°C Ethanol) fixed NIH/3T3 cells using 66122-1-Ig(Rac1 antibody) at dilution of 1:100 and Alexa Fluor 488-conjugated AffiniPure Goat Anti-Mouse IgG(H+L).



IP Result of anti-RAC1 (IP:66122-1-Ig, 3ug; Detection:66122-1-Ig 1:700) with HL-60 cells lysate 4000ug.