

Nur für Forschungszwecke

# APOL1-Specific Monoklonaler Antikörper



Katalog-Nr.: 66124-1-Ig

Vorgestelltes Produkt

14 Publikationen

## Allgemeine Informationen

### Katalog-Nr.:

66124-1-Ig

### Größe:

150ul, Konzentration: 3700 µg/ml von 8542

Nanodrop und 1573 µg/ml durch die Bradford-Methode mit BSA als Standard;

### Wirt:

Maus

### Isotyp:

IgG2a

### Immunogen Katalognummer:

AG2016

### GenBank-Zugangsnummer:

BC017331

### GeneID (NCBI):

8542

### Vollständiger Name:

apolipoprotein L 1

### Berechnete Masse:

44 kDa

### Beobachtete Masse:

39-45 kDa

### Reinigungsmethode:

Protein-A-Reinigung

### CloneNo.:

1G12D11

### Empfohlene Verdünnungen:

WB 1:20000-1:100000

IP 0.5-4.0 µg für IP und 1:5000-1:50000

für WB

IHC 1:500-1:5000

IF 1:50-1:500

## Anwendungen

### Geprüfte Anwendungen:

FC, IF, IHC, IP, WB, ELISA

### In Publikationen genannte Anwendungen:

IF, IHC, IP, WB

### Getestete Reaktivität:

Human

### Zitierte Arten:

Human

**Hinweis-IHC: Antigendemaskierung mit TE-Puffer pH 9,0 empfohlen. (\*) Wahlweise kann die Antigendemaskierung auch mit Citratpuffer pH 6,0 erfolgen.**

### Positivkontrollen:

WB: humanes Plasmagewebe,

IP: humanes Plasmagewebe,

IHC: humanes Lebergewebe, humanes Nierengewebe

IF: HepG2-Zellen,

## Hintergrundinformationen

Human apolipo-protein L1 (APOL1) is a minor component of plasma high density lipoprotein (HDL) particles, acting as an interacting protein of apolipoprotein A1 (ApoA1). The human ApoL protein family was thought to be predominantly involved in lipid transport and metabolism. APOL1 is also involved in host innate immunity against Trypanosoma parasites. Once activated, APOL1 can lyse the parasite and protect human from infection. Genetic variants in APOL1 gene, which are found in African ancestry with high frequency, associate with chronic kidney disease, like focal segmental glomerulosclerosis (FSGS), HIV-associated nephropathy (HIVAN), and hypertensive nephropathy. APOL1 share structural and functional similarities with proteins of the Bcl-2 family and may have roles in apoptosis and autophagy. It is notable that APOL1 exists only in human and a few other primate species, and mouse does not express an APOL1 orthologue. This antibody recognizes the endogenous ApoL1 of 39-45 kDa in blood lysate. This antibody is specific to APOL1.

## Bemerkenswerte Veröffentlichungen

Verfasser	Pubmed ID	Journal	Anwendung
Vinod Kumar	30201495	Am J Pathol	WB,IF
Junnan Wu	34651582	J Clin Invest	WB
Junnan Wu	34715018	Immunity	WB,IF

## Lagerung

### Lagerungsbedingungen:

Bei -20°C lagern. Nach dem Versand ein Jahr lang stabil

### Lagerungspuffer:

PBS mit 0.02% Natriumazid und 50% Glycerin pH 7.3.

Aliquotieren ist nicht notwendig bei -20°C Lagerung

\*\*\* 20ul-Größen enthalten 0.1% BSA

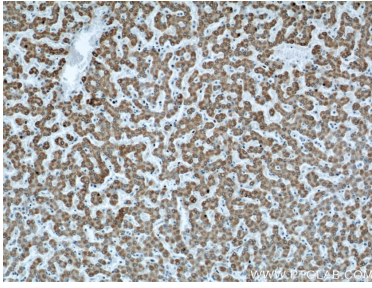
For technical support and original validation data for this product please contact:

T: 1 (888) 4PTGLAB (1-888-478-4522) (toll free in USA), or 1(312) 455-8498 (outside USA)

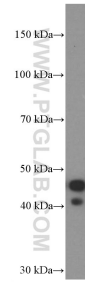
E: proteintech@ptglab.com  
W: ptglab.com

This product is exclusively available under Proteintech Group brand and is not available to purchase from any other manufacturer.

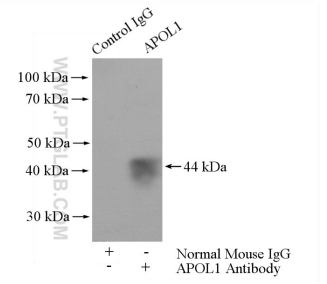
## Ausgewählte Validierungsdaten



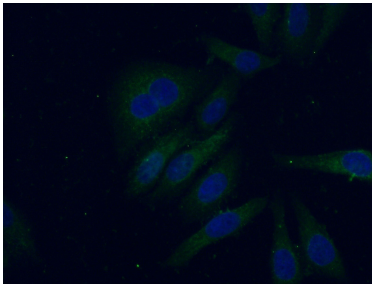
Immunohistochemical analysis of paraffin-embedded human liver using 66124-1-Ig (APOL1 antibody) at dilution of 1:500 (under 10x lens).



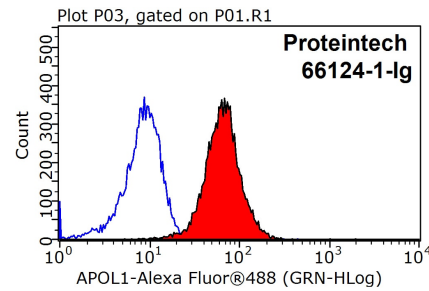
1.5 µg human plasma was subjected to SDS PAGE followed by western blot with 66124-1-Ig (APOL1 Antibody) at dilution of 1:400,000 incubated at room temperature for 1.5 hours.



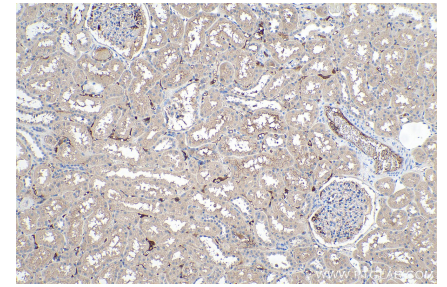
IP Result of anti-APOL1 (IP: 66124-1-Ig, 5 µg; Detection: 66124-1-Ig 1:10000) with human plasma lysate 4000 µg.



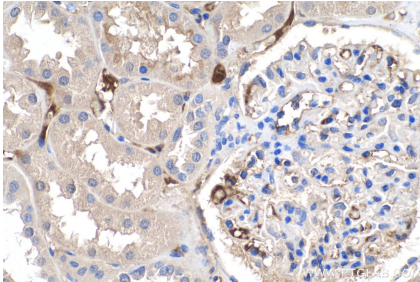
Immunofluorescent analysis of (-20°C Ethanol) fixed HepG2 cells using 66124-1-Ig (APOL1 antibody) at dilution of 1:100 and Alexa Fluor 488-conjugated AffiniPure Goat Anti-Mouse IgG (H+L).



1x10<sup>6</sup> HepG2 cells were stained with 0.2 µg APOL1 antibody (66124-1-Ig, red) and control antibody (blue). Fixed with 90% MeOH blocked with 3% BSA (30 min). Alexa Fluor 488-conjugated AffiniPure Goat Anti-Mouse IgG (H+L) with dilution 1:1000.



Immunohistochemical analysis of paraffin-embedded human kidney tissue slide using 66124-1-Ig (APOL1-Specific antibody) at dilution of 1:5000 (under 10x lens). Heat mediated antigen retrieval with Tris-EDTA buffer (pH 9.0).



Immunohistochemical analysis of paraffin-embedded human kidney tissue slide using 66124-1-Ig (APOL1-Specific antibody) at dilution of 1:5000 (under 40x lens). Heat mediated antigen retrieval with Tris-EDTA buffer (pH 9.0).