

Nur für Forschungszwecke

ACTC1-specific Monoklonaler Antikörper



Katalog-Nr.: 66125-1-Ig **8 Publikationen**

Allgemeine Informationen

Katalog-Nr.: 66125-1-Ig	GenBank-Zugangsnummer: NM_005159	Reinigungsmethode: Protein-A-Reinigung
Größe: 150ul, Konzentration: 747 µg/ml durch die Bradford-Methode mit BSA als Standard;	GeneID (NCBI): 70	CloneNo.: 1F2B9
Wirt: Maus	Vollständiger Name: actin, alpha, cardiac muscle 1	Empfohlene Verdünnungen: WB 1:2500-1:10000 IHC 1:100-1:400 IF 1:50-1:500
Isotyp: IgG1	Berechnete Masse: 42 kDa	
	Beobachtete Masse: 42 kDa	

Anwendungen

Geprüfte Anwendungen:

FC, IF, IHC, WB, ELISA

In Publikationen genannte Anwendungen:

IF, IHC, WB

Getestete Reaktivität:

Hausschwein, Human, Maus, Ratte

Zitierte Arten:

Human, Kaninchen, Maus, Ratte

Hinweis-IHC: Antigendemaskierung mit TE-Puffer pH 9,0 empfohlen. (*) Wahlweise kann die Antigendemaskierung auch mit Citratpuffer pH 6,0 erfolgen.

Positivkontrollen:

WB : humanes Herzgewebe, Hausschwein-Herzgewebe, Mausherzgewebe, Rattenherzgewebe

IHC : humanes Herzgewebe, humanes Herz- und humanes Skelettmuskelgewebe

IF : Mausherzgewebe,

Hintergrundinformationen

Actins are highly conserved proteins that are involved in various types of cell motility and are ubiquitously expressed in all eukaryotic cells. The ACTC1 gene encodes cardiac muscle alpha-actin, the predominant actin isoform in adult heart, which interacts with a variety of proteins to produce the force for muscle contraction. This antibody is specific to the ACTC1. It does not cross-react with other actin isoforms.

Bemerkenswerte Veröffentlichungen

Verfasser	Pubmed ID	Journal	Anwendung
Jiang Yan	36087696	Eur J Pharmacol	WB,IF
Muyao Ye	34642907	Immunol Res	WB
Eric E Abrahamson	36411500	Amyloid	IF

Lagerung

Lagerungsbedingungen:

Bei -20°C lagern. Nach dem Versand ein Jahr lang stabil

Lagerungspuffer:

PBS mit 0.02% Natriumazid und 50% Glycerin pH 7.3.

Aliquotieren ist nicht notwendig bei -20°C Lagerung

***** 20ul-Größen enthalten 0.1% BSA**

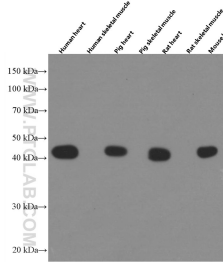
For technical support and original validation data for this product please contact:

T: 1 (888) 4PTGLAB (1-888-478-4522) (toll free in USA), or 1(312) 455-8498 (outside USA)

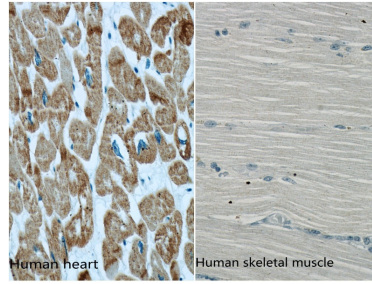
E: proteintech@ptglab.com
W: ptglab.com

This product is exclusively available under Proteintech Group brand and is not available to purchase from any other manufacturer.

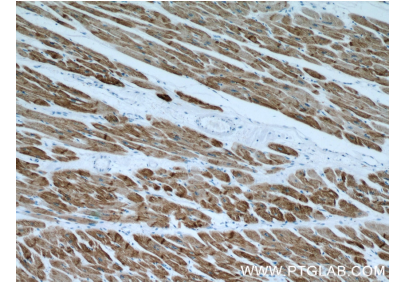
Ausgewählte Validierungsdaten



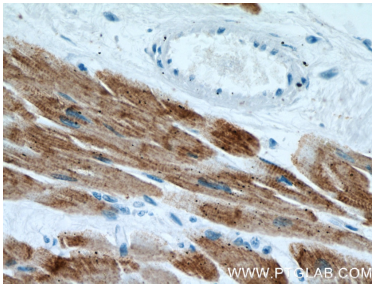
Various lysates were subjected to SDS PAGE followed by western blot with 66125-1-Ig (ACTC1-specific antibody) at dilution of 1:100000 incubated at room temperature for 1.5 hours.



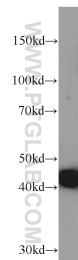
Immunohistochemical analysis of paraffin-embedded human heart and human skeletal muscle using 66125-1-Ig (ACTC1 specific antibody) at dilution 1:500. (under 40x lens).



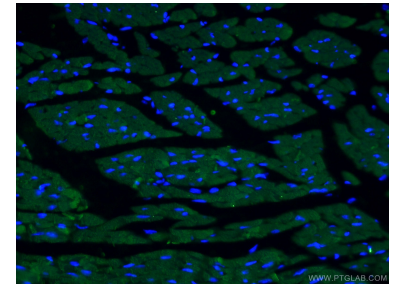
Immunohistochemical analysis of paraffin-embedded human heart using 66125-1-Ig (ACTC1-specific antibody) at dilution of 1:200 (under 10x lens).



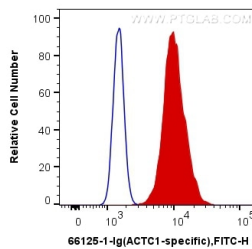
Immunohistochemical analysis of paraffin-embedded human heart using 66125-1-Ig (ACTC1-specific antibody) at dilution of 1:200 (under 40x lens).



human heart tissue were subjected to SDS PAGE followed by western blot with 66125-1-Ig (ACTC1-specific antibody) at dilution of 1:5000 incubated at room temperature for 1.5 hours.



Immunofluorescent analysis of (4% PFA) fixed mouse heart tissue using 66125-1-Ig (ACTC1-specific antibody) at dilution of 1:50 and Alexa Fluor 488-conjugated AffiniPure Goat Anti-Mouse IgG(H+L).



1×10^6 C2C12 cells were intracellularly stained with 0.4 μ g Anti-Human ACTC1-specific (66125-1-Ig, Clone:1F2B9) and CoraLite[®]488-Conjugated AffiniPure Goat Anti-Mouse IgG(H+L) at dilution 1:1000 (red), or 0.4 μ g Control Antibody. Cells were fixed with 4% PFA and permeabilized with Flow Cytometry Perm Buffer (PF00011-C).