

Alpha-2-Macroglobulin Monoklonaler Antikörper

Katalog-Nr.: 66126-1-Ig

Allgemeine Informationen

Katalog-Nr.:

66126-1-Ig

Größe:

150ul, Konzentration: 3900 µg/ml von 2 Nanodrop und 1800 µg/ml durch die Bradford-Methode mit BSA als Standard;

Wirt:

Maus

Isotyp:

IgG2a

Immunogen Katalognummer:

AG19245

GenBank-Zugangsnummer:

BC040071

GeneID (NCBI):

2

Vollständiger Name:

alpha-2-macroglobulin

Berechnete Masse:

1474 aa, 163 kDa

Beobachtete Masse:

185 kDa

Reinigungsmethode:

Protein-A-Reinigung

CloneNo.:

4B11F7

Empfohlene Verdünnungen:

WB 1:500-1:2000

IP 0.5-4.0 µg für IP und 1:500-1:1000

für WB

IHC 1:20-1:200

IF 1:200-1:800

Anwendungen

Geprüfte Anwendungen:

IF, IHC, IP, WB, ELISA

Getestete Reaktivität:

Human

Hinweis-IHC: Antigenmaskierung mit TE-Puffer pH 9,0 empfohlen. (*) Wahlweise kann die Antigenmaskierung auch mit Citratpuffer pH 6,0 erfolgen.

Positivkontrollen:

WB: HepG2-Zellen, humanes Hirngewebe

IP: humanes Plasmagewebe,

IHC: humanes Lebergewebe,

IF: HepG2-Zellen,

Hintergrundinformationen

alpha-2-macroglobulin, also known as α2-macroglobulin (α2M and A2M), is a protein abundant in the plasma of vertebrates and several invertebrates. A2M is an evolutionarily conserved arm of the innate immune system. It also mediates the proliferation of T cells and macrophages. A2M acts as a nonspecific protease inhibitor involved in the host defense mechanism that inactivates both endogenous and exogenous proteases, including trypsin, thrombin and collagenase. Even though A2M is produced predominantly by the liver, it may also be expressed in the reproductive tract, heart, and brain, and may have important roles in many physiological processes and medical illnesses including Alzheimer's disease.

Lagerung

Lagerungsbedingungen:

Bei -20°C lagern. Nach dem Versand ein Jahr lang stabil

Lagerungspuffer:

PBS mit 0.02% Natriumazid und 50% Glycerin pH 7.3.

Aliquotieren ist nicht notwendig bei -20°C Lagerung

*** 20ul-Größen enthalten 0.1% BSA

For technical support and original validation data for this product please contact:

T: 1 (888) 4PTGLAB (1-888-478-4522) (toll free in USA), or 1(312) 455-8498 (outside USA)

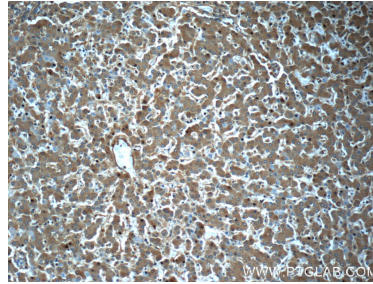
E: proteintech@ptglab.com
W: ptglab.com

This product is exclusively available under Proteintech Group brand and is not available to purchase from any other manufacturer.

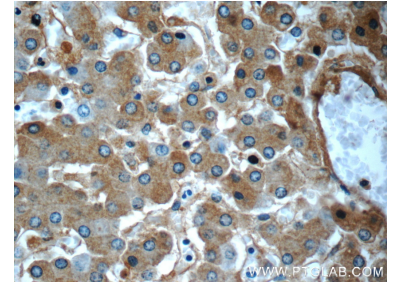
Ausgewählte Validierungsdaten



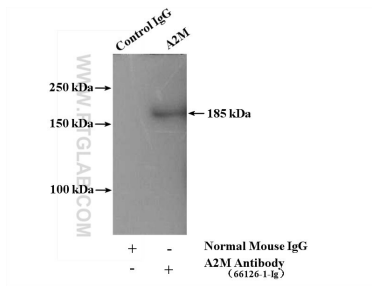
HepG2 cells were subjected to SDS PAGE followed by western blot with 66126-1-Ig (Alpha-2-macroglobulin antibody) at dilution of 1:1000 incubated at room temperature for 1.5 hours.



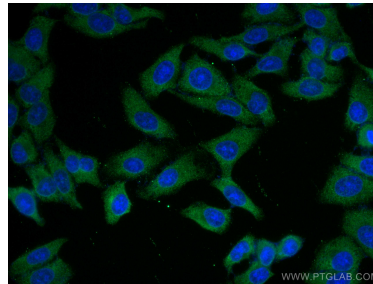
Immunohistochemical analysis of paraffin-embedded human liver slide using 66126-1-Ig (Alpha-2-macroglobulin antibody at dilution of 1:50.



Immunohistochemical analysis of paraffin-embedded human liver slide using 66126-1-Ig (Alpha-2-macroglobulin antibody at dilution of 1:50.



IP Result of anti-Alpha-2-macroglobulin (IP:66126-1-Ig, 5ug; Detection:66126-1-Ig 1:500) with human plasma lysate 4000ug.



Immunofluorescent analysis of (-20°C Methanol) fixed HepG2 cells using Alpha-2-Macroglobulin antibody (66126-1-Ig, Clone: 4B11F7) at dilution of 1:400 and CoraLite®488-Conjugated AffiniPure Goat Anti-Mouse IgG(H+L).