

Allgemeine Informationen

Katalog-Nr.: 66150-1-Ig	GenBank-Zugangsnummer: BC002745	Reinigungsmethode: Protein-A-Reinigung
Größe: 150ul, Konzentration: 2093 µg/ml von2026 Nanodrop und 1000 µg/ml durch die Bradford-Methode mit BSA als Standard;	GeneID (NCBI): enolase 2 (gamma, neuronal)	CloneNo.: 6F8G3
Wirt: Maus	Vollständiger Name: enolase 2 (gamma, neuronal)	Empfohlene Verdünnungen: WB 1:5000-1:50000 IHC 1:2500-1:10000 IF 1:50-1:400
Isotyp: IgG1	Berechnete Masse: 47 kDa	
Immunogen Katalognummer: AG19106	Beobachtete Masse: 47 kDa	

Anwendungen

Geprüfte Anwendungen:

FC, IF, IHC, WB, ELISA

In Publikationen genannte Anwendungen:

IF, IHC, WB

Getestete Reaktivität:

Hausschwein, Human, Maus, Ratte

Zitierte Arten:

Human, Maus, Ratte

Hinweis-IHC: Antigendemaskierung mit TE-Puffer pH 9,0 empfohlen. (*) Wahlweise kann die Antigendemaskierung auch mit Citratpuffer pH 6,0 erfolgen.

Positivkontrollen:

WB: PC-12-Zellen, C6-Zellen, fetales humanes Hirngewebe, Hausschwein-Cerebellum-Gewebe, Hausschwein-Hirngewebe, HEK-293-Zellen, Maus-Cerebellum-Gewebe, Maushirngewebe, Neuro-2a-Zellen, Ratten-Cerebellum-Gewebe, Rattenhirngewebe, SH-SY5Y-Zellen, U-251-Zellen

IHC: Maushirngewebe, humanes Hirngewebe, Ratten-Cerebellum-Gewebe, Rattenhirngewebe

IF: SH-SY5Y-Zellen, Maushirngewebe

Hintergrundinformationen

NSE, also named as ENO2, belongs to the enolase family. Enolases are cytoplasmic glycolytic enzymes that may be involved in differentiation. The enolase has three isoenzymes, alpha, beta and gamma. The alpha form is expressed in most tissues, whereas the beta form is expressed in muscle tissue. The gamma enolase (ENO2), a homodimer, is primarily localized in neurons and neuroendocrine cells and is a cancer diagnostic marker for brain tumors (PMID:7520111). ENO2 plays a role in the glycolysis-related energy pathway and might be involved in higher metabolic activity during the day than at night, at least in part.

Bemerkenswerte Veröffentlichungen

Verfasser	Pubmed ID	Journal	Anwendung
Rongkun Li	34836938	Cell Death Dis	WB
Huan Liu	36377337	Brain Behav	IF
Jiaren Pan	36419844	Dis Markers	WB,IHC

Lagerung

Lagerungsbedingungen:

Bei -20°C lagern. Nach dem Versand ein Jahr lang stabil

Lagerungspuffer:

PBS mit 0.02% Natriumazid und 50% Glycerin pH 7.3.

Aliquotieren ist nicht notwendig bei -20°C Lagerung

*** 20ul-Größen enthalten 0.1% BSA

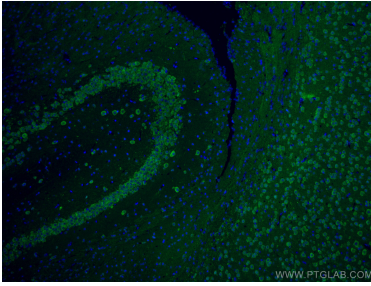
For technical support and original validation data for this product please contact:

T: 1 (888) 4PTGLAB (1-888-478-4522) (toll free in USA), or 1(312) 455-8498 (outside USA)

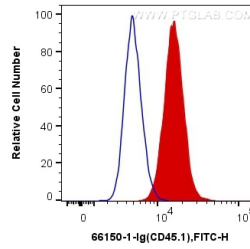
E: proteintech@ptglab.com
W: ptglab.com

This product is exclusively available under Proteintech Group brand and is not available to purchase from any other manufacturer.

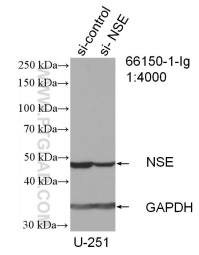
Ausgewählte Validierungsdaten



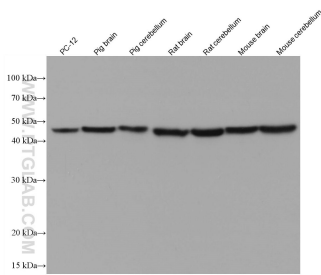
Immunofluorescent analysis of (4% PFA) fixed mouse brain tissue using NSE antibody (66150-1-Ig, Clone: 6F8G3) at dilution of 1:400 and CoraLite®488-Conjugated AffiniPure Goat Anti-Mouse IgG(H+L).



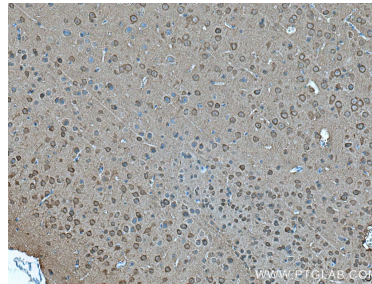
1X10⁶ SH-SY5Y cells were intracellularly stained with 0.2 ug Anti-Human NSE (66150-1-Ig, Clone:6F8G3) and CoraLite®488-Conjugated AffiniPure Goat Anti-Mouse IgG(H+L) at dilution 1:1000 (red), or 0.2 ug Control Antibody. Cells were fixed with 4% PFA and permeabilized with Flow Cytometry Perm Buffer (PF00011-C).



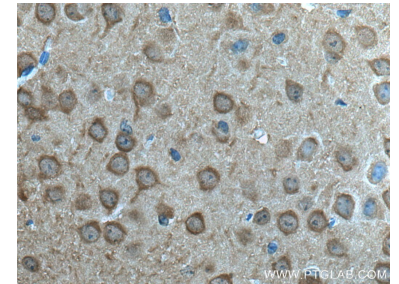
WB result of NSE antibody (66150-1-Ig; 1:4000; incubated at room temperature for 1.5 hours) with sh-Control and sh-NSE transfected U-251 cells.



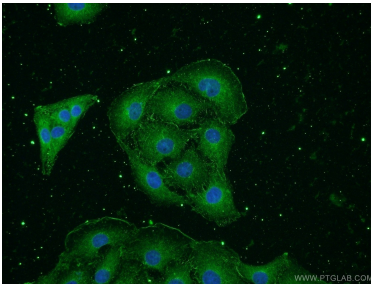
Various lysates were subjected to SDS PAGE followed by western blot with 66150-1-Ig (NSE antibody) at dilution of 1:50000 incubated at room temperature for 1.5 hours.



Immunohistochemical analysis of paraffin-embedded mouse brain tissue slide using 66150-1-Ig (NSE antibody) at dilution of 1:5000 (under 10x lens). Heat mediated antigen retrieval with Tris-EDTA buffer (pH 9.0).



Immunohistochemical analysis of paraffin-embedded mouse brain tissue slide using 66150-1-Ig (NSE antibody) at dilution of 1:5000 (under 40x lens). Heat mediated antigen retrieval with Tris-EDTA buffer (pH 9.0).



Immunofluorescent analysis of SH-SY5Y cells using 66150-1-Ig (NSE antibody) at dilution of 1:50 and Alexa Fluor 488-conjugated AffiniPure Goat Anti-Mouse IgG (H+L).