

Nur für Forschungszwecke

HBE1-Specific Monoklonaler Antikörper

Katalog-Nr.:66151-1-Ig



Allgemeine Informationen

Katalog-Nr.: 66151-1-Ig	GenBank-Zugangsnummer: NM_005330	Reinigungsmethode: Protein-G-Reinigung
Größe: 150ul , Konzentration: 1811 µg/ml von3046 Nanodrop und 1040 µg/ml durch die Bradford-Methode mit BSA als Standard;	GeneID (NCBI): hemoglobin, epsilon 1	CloneNo.: 2C11G6
Wirt: Maus	Vollständiger Name: hemoglobin, epsilon 1	Empfohlene Verdünnungen: WB 1:500-1:1000 IHC 1:500-1:2000
Isotyp: IgG1	Beobachteté Masse: 16 kDa	

Anwendungen

Geprüfte Anwendungen: FC, IHC, WB, ELISA	Positivkontrollen: WB : K-562-Zellen, IHC : humanes Plazenta-Gewebe,
Getestete Reaktivität: Human	

Hinweis-IHC: Antigenmaskierung mit TE-Puffer pH 9,0 empfohlen. (*) Wahlweise kann die Antigenmaskierung auch mit Citratpuffer pH 6,0 erfolgen.

Hintergrundinformationen

The hemoglobin molecule is a tetramer consisting of two α -globin-like polypeptide chains and two β -globin-like chains. The human hemoglobin genes are expressed in a tightly developmentally controlled fashion. ϵ -globin (HBE1) is the predominantly expressed gene during the embryonic stage. The epsilon hemoglobin chain seems to be the best marker for fetal nucleated red blood cells (NRBCs). Anti-HBE1 may be used to label and isolate fetal cells from maternal blood and can be useful in prenatal diagnosis. This antibody specifically recognizes the HBE1 and doesn't cross-react with other globin chains.

Lagerung

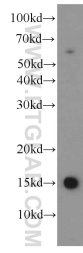
Lagerungsbedingungen:
Bei -20°C lagern. Nach dem Versand ein Jahr lang stabil
Lagerungspuffer:
PBS mit 0.02% Natriumazid und 50% Glycerin pH 7.3.
Aliquotieren ist nicht notwendig bei -20°C Lagerung

***** 20ul-Größen enthalten 0.1% BSA**

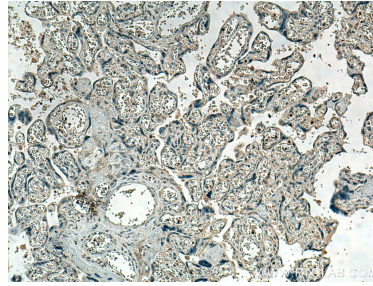
For technical support and original validation data for this product please contact:
T: 1 (888) 4PTGLAB (1-888-478-4522) (toll free in USA), or 1(312) 455-8498 (outside USA)
E: proteintech@ptglab.com
W: ptglab.com

This product is exclusively available under Proteintech Group brand and is not available to purchase from any other manufacturer.

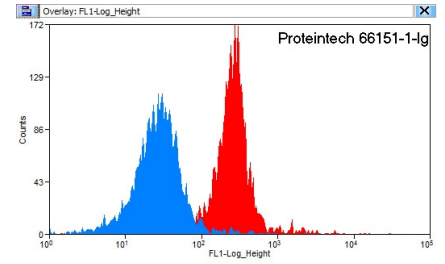
Ausgewählte Validierungsdaten



K-562 cells were subjected to SDS PAGE followed by western blot with 66151-1-Ig (HBE1-Specific antibody) at dilution of 1:500 incubated at room temperature for 1.5 hours.



Immunohistochemical analysis of paraffin-embedded human placenta tissue slide using 66151-1-Ig (HBE1-Specific antibody) at dilution of 1:1000 (under 10x Lens). Heat mediated antigen retrieval with Tris-EDTA buffer (pH 9.0).



1×10^6 K-562 cells were stained with 0.2 ug Anti-Human HBE1-Specific (66151-1-Ig, Clone: 2C11G6) and CoraLite488-Conjugated AffiniPure Goat Anti-Mouse IgG(H+L) at dilution 1:1500 (red), or stained with 0.2 ug isotype control and CoraLite488-Conjugated AffiniPure Goat Anti-Mouse IgG(H+L) at dilution 1:1500 (blue). Cells were fixed with 90% MeOH.